

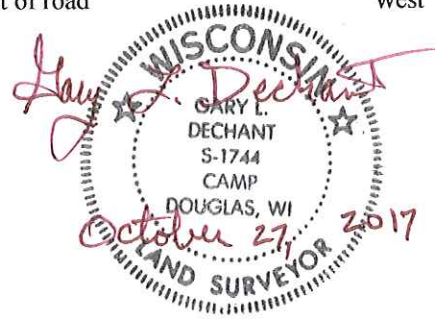
# 105

**U.S. PUBLIC LAND CORNER  
MAINTENANCE**

**Corner ID : SE Sec. 27, T18N-R1E  
41801270000**

| <u>FIELD DATE</u>  | <u>CREW</u>                             | <u>MONUMENT TYPE</u> -----                                                                           |
|--------------------|-----------------------------------------|------------------------------------------------------------------------------------------------------|
| September 20, 2017 | Zachariah P. Dechant<br>Gary L. Dechant | Existing Harrison, top broke off, down 12"<br>26' east of Fulda Ave, 212' SE of Center Line CTH "PP" |

| <u>References:</u>                                                                           | <u>Bearing</u> | <u>Distance</u> |
|----------------------------------------------------------------------------------------------|----------------|-----------------|
| 1) Existing 3/4" round iron bar west of ditch                                                | N19E           | 46.81' (46.79') |
| 2) Set 3/4" x 24" round iron bar on line with west power poles, down 6"<br>18' east of ditch | East           | 47.47           |
| 3) Set 3/4"x24" round iron bar, down 6", 2' east of RR tie fence post                        | S20W           | 107.97'         |
| 4) Existing 3/4" round iron bar, down 6", west of road                                       | West           | 57.08'          |



I, Bryan H. Meyer, do hereby certify that on the 25<sup>th</sup> day of March 19 86, I found (evidence) ~~no evidence~~ of the Northeast corner of Section 34, T 18 N, R 1 E Fourth Principal Meridian, and I re-established said corner according to the Wisconsin Statutes as shown and described hereon.

Dated this 29<sup>th</sup> day of Dec. 1986.

Bryan H. Meyer  
Deputy County Surveyor  
Title

History of corner establishment since Original Government Survey

Duke Marten was here in April of 1974. Larry Feddersen was here in November of 1977. William Jung was here in May of 1980 and set a Harrison marker at the corner. (see page 1)

Description of corner evidence found:

George Baker (Monroe County Highway Commissioner) contacted the County Surveyors Office and informed us that he was planning to resurface C.T.H. "PP" and that the road alignment would change at this point. Three additional ties were taken in the fall of 1985. After completion of the road project, the Harrison and ties were found to be correct. (The Harrison did have the top broken off)



COUNTY SURVEYOR FORM NO. 1

Description of corner and witness monuments, references and accessories used to perpetuate the original or re-established location of this corner:

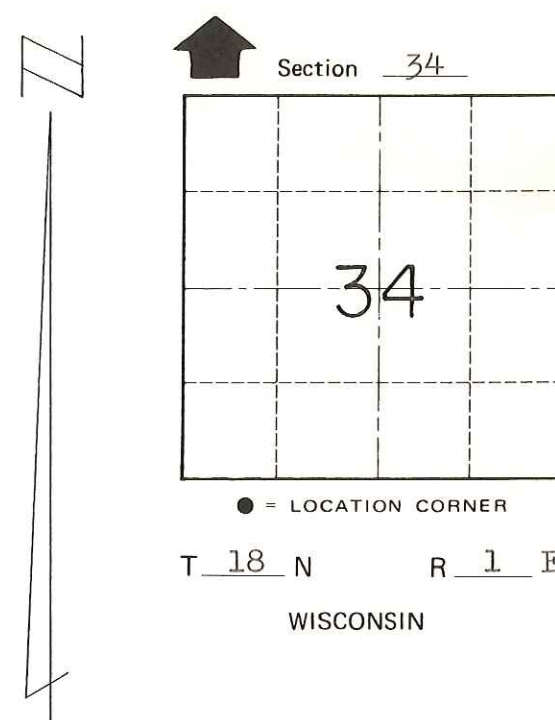
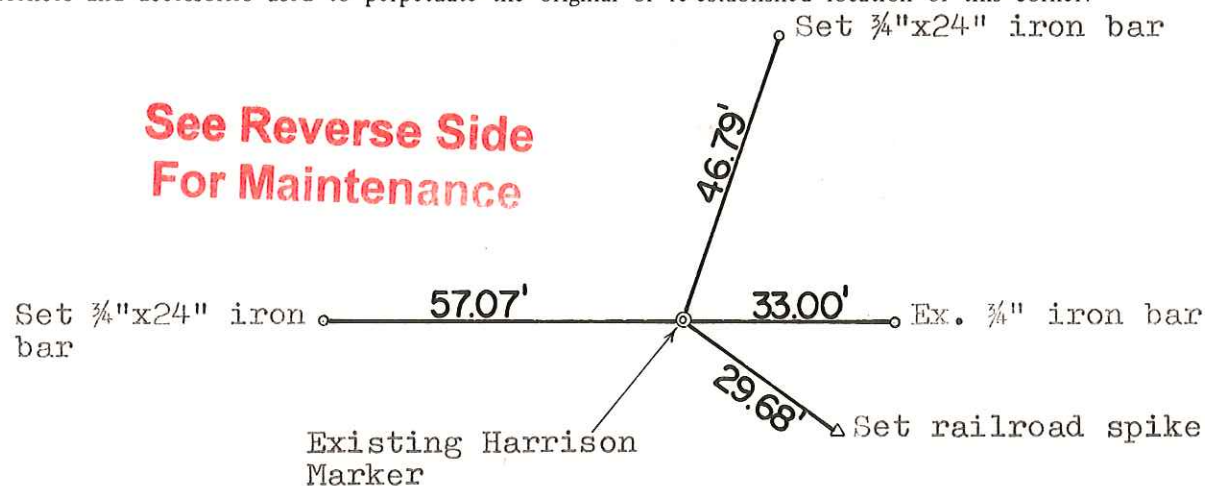
Crew: Meyer, Wilhite  
Date: March 25, 1986

Witnesses to corner location:

Dallas Wilhite

Bryan H. Meyer

See Reverse Side For Maintenance



SURVEY CONTROL ORDER

|            |       |
|------------|-------|
| Horizontal | _____ |
| Vertical   | _____ |

WISCONSIN COORDINATE SYSTEM

| Corner            | East (X) | North (Y) | Elevation (Z) | Zone |
|-------------------|----------|-----------|---------------|------|
| Control Sta. Name |          |           |               |      |

~~City, Village or~~ Town of Byron  
County of Monroe

I, William C. Jung, do hereby certify that on the 21st day of May 1980, I found (evidence) (~~no evidence~~) of the NE corner of Section 34, T 18 N, R 1 E Fourth Principal Meridian, and I re-established said corner according to the Wisconsin Statutes as shown and described hereon.

Dated this 20th day of Jan. 1981.

William C. Jung  
 William C. Jung, R.L.S. 1323  
 Title

History of corner establishment since Original Government Survey

No recorded history until Duane Marten set a Harrison at this corner on April 23, 1974. In November of 1977, Larry Feddersen found a king bolt located about 7'+ North and 2'+ West of Marten's Harrison. Feddersen's field evidence and measurements proved Marten's Harrison to be incorrect.

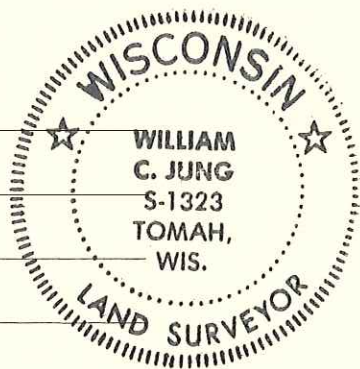
Description of corner evidence found:

Found an old hatchet, an old axe head, an old R.R. spike, an old chaining pin, an old iron bar, an old bushing, an old large iron pin, and a small stone, all of which are unrecorded. Removed all of the above evidence and moved D. Marten's Harrison to this point. All of the above objects were in one hole! Also removed an iron bar which was over the top of all of this. The last iron bar was L. Feddersen's reference iron. Accepted Feddersen's corner.

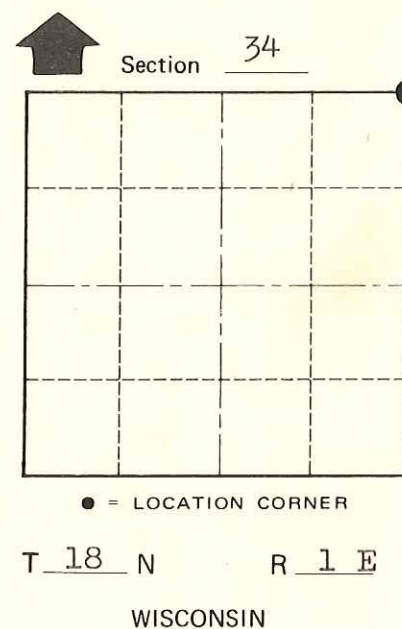
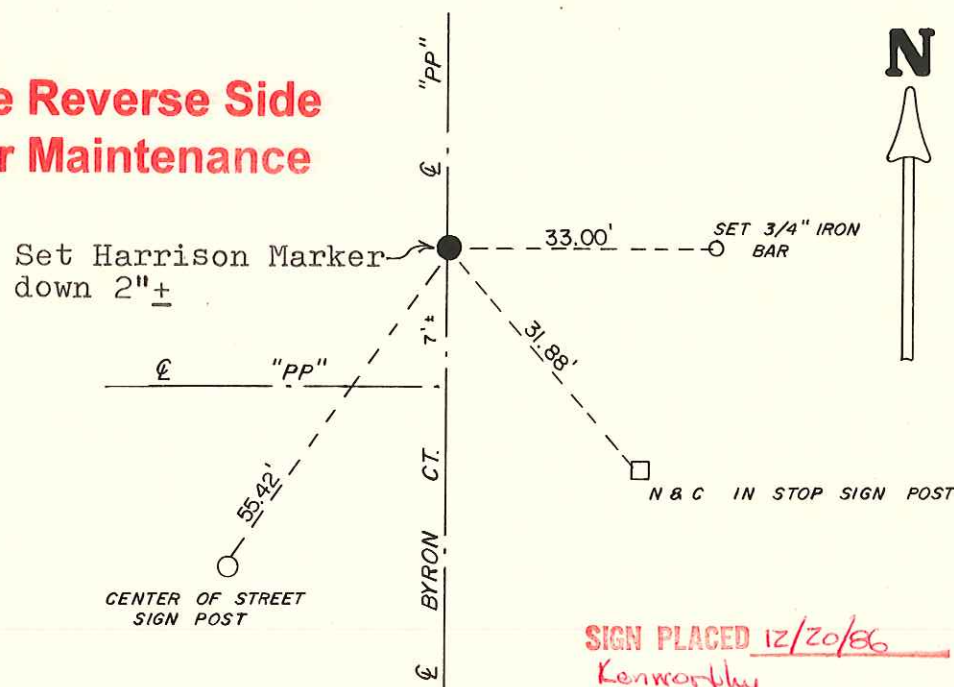
Description of corner and witness monuments, references and accessories used to perpetuate the original or re-established location of this corner:

Witnesses to corner location:

W. Jung  
S. Sowers  
C. Dade



See Reverse Side For Maintenance



Approved: **HARLEY A. SIME**  
**MONROE CO. SURVEYOR**

SURVEY CONTROL ORDER

|            |       |
|------------|-------|
| Horizontal | _____ |
| Vertical   | _____ |

WISCONSIN COORDINATE SYSTEM

| Corner            | East (X) | North (Y) | Elevation (Z) | Zone |
|-------------------|----------|-----------|---------------|------|
| Control Sta. Name |          |           |               |      |

SIGN PLACED 12/20/86  
 Kenworthy

~~City, Village~~ or Town Byron  
 County of Monroe

COUNTY SURVEYOR FORM NO. 1