

104

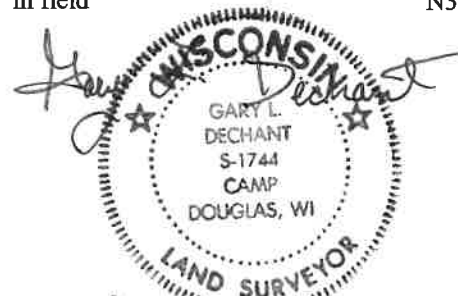
**U.S. PUBLIC LAND CORNER
MAINTENANCE**

**Corner ID : S1/4 Sec. 26, T18N-R1E
41801260020**

<u>DATE</u>	<u>CREW</u>	<u>MONUMENT TYPE -----</u>
June 1, 2018	Zachariah P. Dechant Gary L. Dechant	Existing Harrison intact. Steel post on west side. Set survey sign 1' north. All fences and old ties gone.

References:

	<u>Bearing</u>	<u>Distance</u>
1) Set 3/4"x 24" round iron bar, down 12" in field	N38E	42.27'
2) Set 3/4"x24" iron "U" channel, down 12" in field	S46E	31.91'
3) Set 3/4"x24" iron "U" channel, down 12" in field	S34W	56.64'
4) Set 3/4"x24" round iron bar, down 12" in field	N32W	40.60'

Gary L. Dechant

June 4, 2018

CERTIFICATE

I, Harley A. Sime, do hereby certify that on the twentieth day of May 19 82, I found ~~evidence~~ (no evidence) of the South 1/4 corner of Section 26, T 18 N, R 1 E Fourth Principal Meridian, and I re-established said corner according to the Wisconsin Statutes as shown and described hereon.

Dated this 27th day of May 19 82.
Harley A. Sime - R. L. S. 355

County Surveyor, Monroe County

Approved: HARLEY A. SIME
MONROE CO. SURVEYOR

CERTIFIED LAND CORNER

No. 104

History of corner establishment since Original Government Survey

Henry Schroeder was here in December of 1889.

Description of corner evidence found:

Set corner on line and equidistant between the Southwest and Southeast corners of Section 26. The corner fits the East-West fence very well.

See Reverse Side For Maintenance

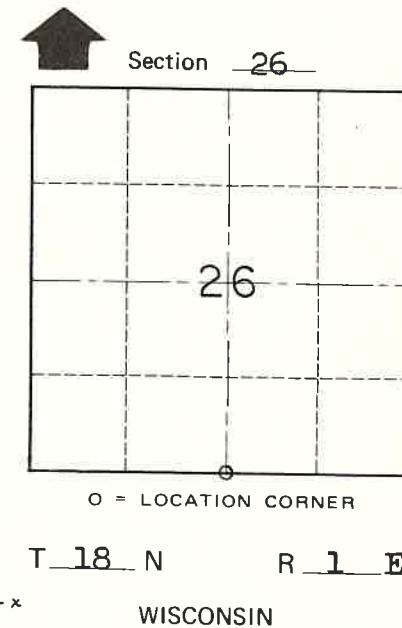
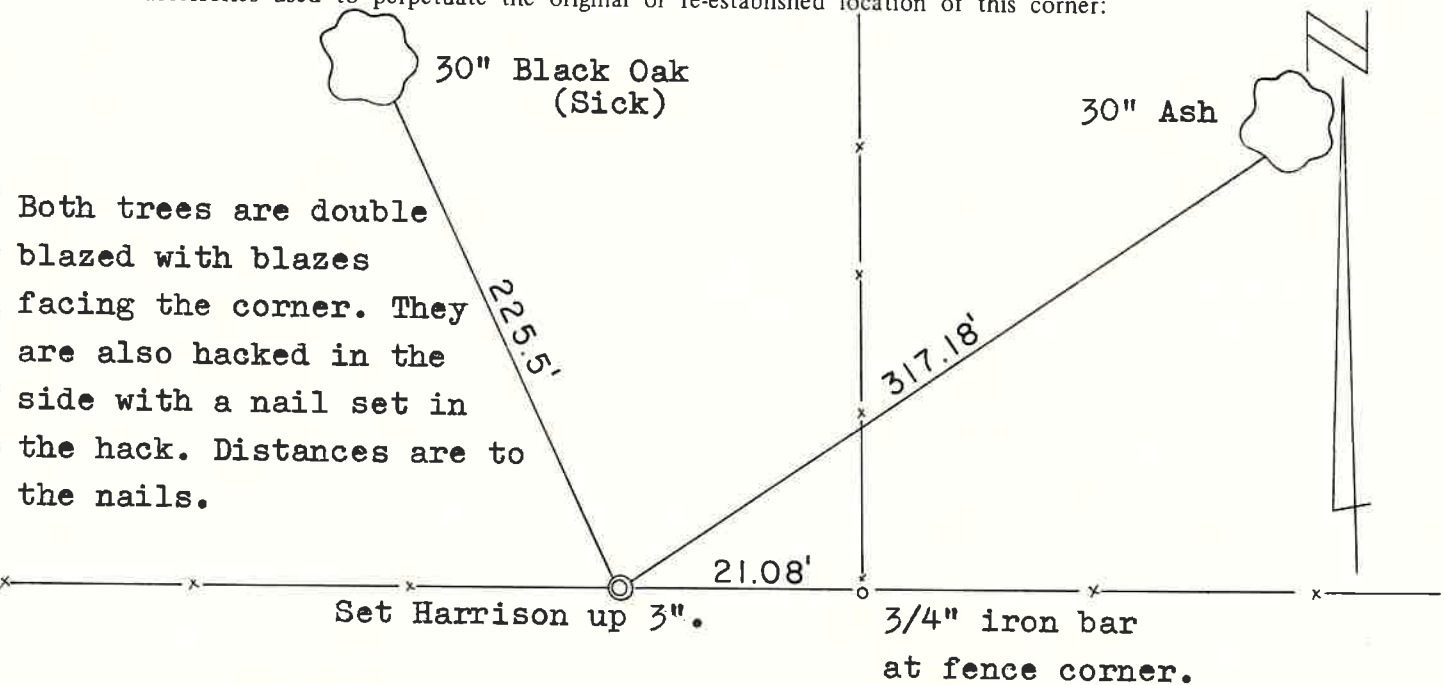


Description of corner and witness monuments, references and accessories used to perpetuate the original or re-established location of this corner:

Witnesses to corner location:

Bryan Meyer - Crew Chief

Gary Dechant



NOTE: All fences shown are in poor condition.
WISCONSIN COORDINATE SYSTEM

SURVEY CONTROL ORDER

Horizontal _____
Vertical _____

Corner	East (X)	North (Y)	Elevation (Z)	Zone
Control Sta. Name				

~~City, Village or~~ Town of Byron

County of Monroe

COUNTY SURVEYOR FORM NO. 1