

CERTIFICATE

CERTIFIED LAND CORNER

No. 101

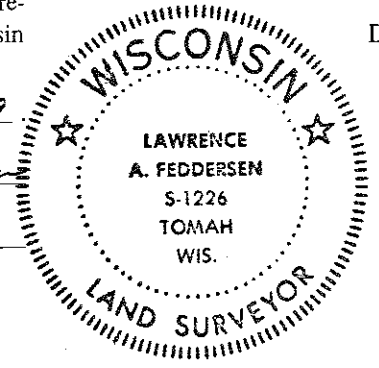
41801250000

I, Lawrence A. Feddersen, do hereby certify that on the 1st & 7th day of February 1979, I found (no evidence) of the Northeast corner of Section 36, T. 18 N, R. 1 E, Fourth Principal Meridian, and I re-established said corner according to the Wisconsin Statutes as shown and described hereon.

Dated this 22 day of May 1979.

Lawrence A. Feddersen

Registered Land Surveyor



History of original corner establishment:

No subsequent history of monument perpetuation since the original U.S. Government Survey in Monroe County.

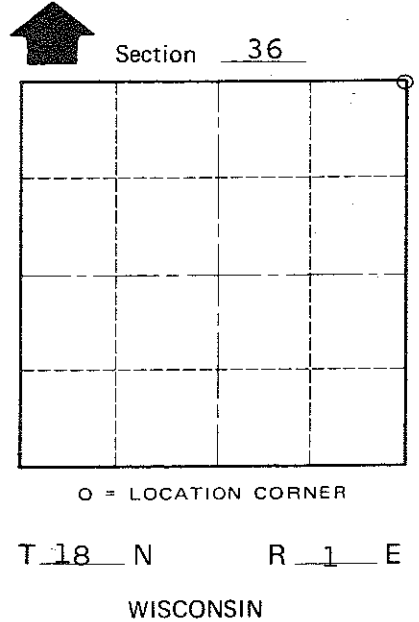
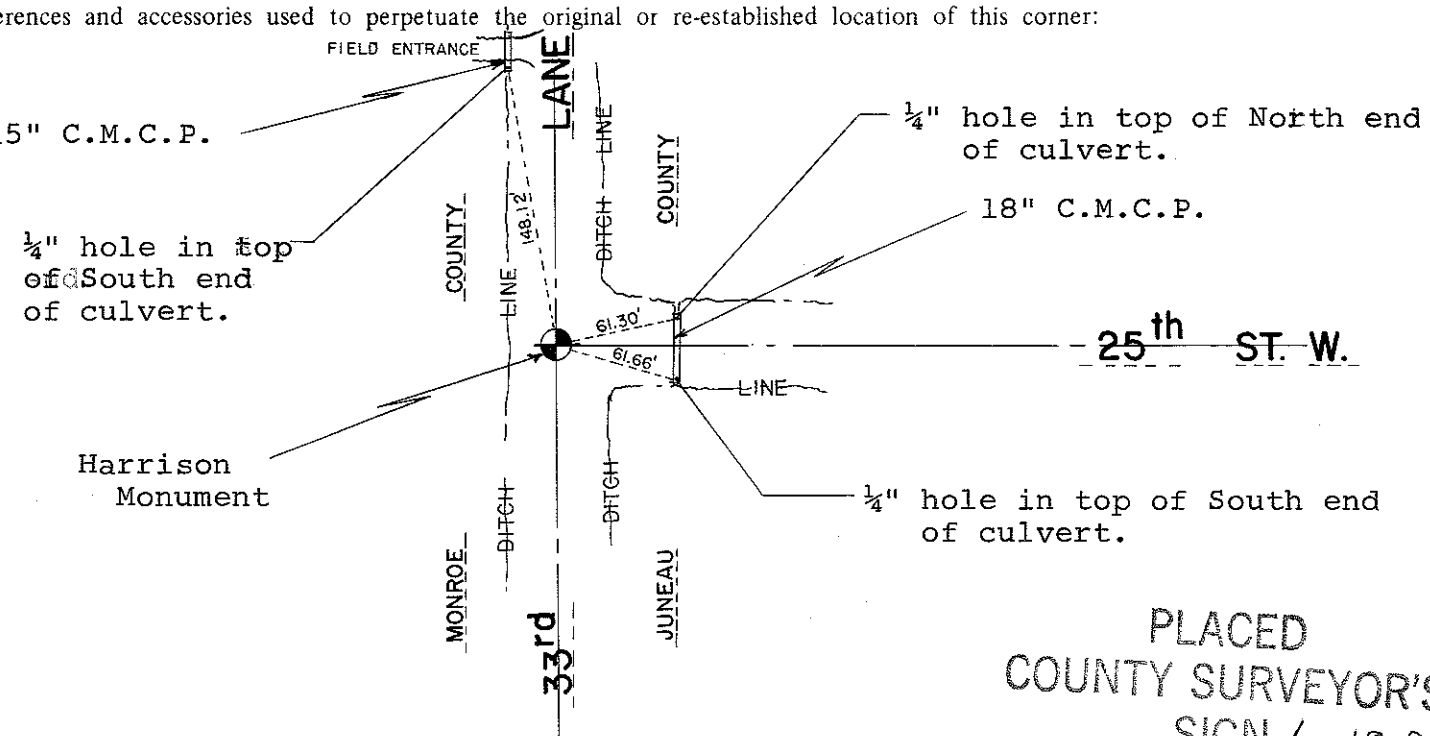
Description of corner evidence found:

Set Harrison at intersection of road centerlines. Road North & South and East.

Agrees with existing conditions to the North and South.

Description of corner and witness monuments, references and accessories used to perpetuate the original or re-established location of this corner:

Witnesses to corner location: Lawrence A. Feddersen, Mark R. Heidecke



COUNTY SURVEYOR FORM NO. 1

SURVEY CONTROL ORDER table with rows for Horizontal and Vertical measurements.

WISCONSIN COORDINATE SYSTEM

Table with columns: Corner, Control Sta. Name, East (X), North (Y), Elevation (Z), Zone.

PLACED COUNTY SURVEYOR'S SIGN 6-18-87

Byron Town, Monroe County, Wisconsin