

CERTIFICATE

CERTIFIED LAND CORNER

No. 79B

41801242020

I, William C. Jung, do hereby certify that on the 31st day of March 1976, I found (evidence) (~~no evidence~~) of the C 1/4 corner of Section 24, T18 N, R1 E, Fourth Principal Meridian, and I re-established said corner according to the Wisconsin Statutes as shown and described hereon.

History of original corner establishment:

Dated this 6th day of Feb. 1978.

Description of corner evidence found:

William C. Jung, R.L.S. 1323

Found the iron pipe used by H. A. Sime in his certified survey maps of January 23, 1963, and of March 26, 1963.

County Surveyor's Office

COUNTY SURVEYOR FORM NO. 1

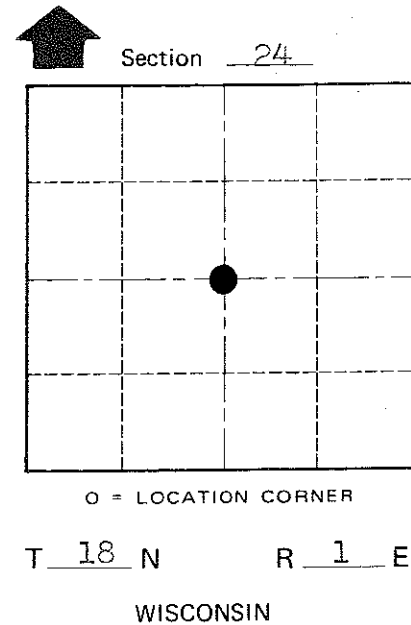
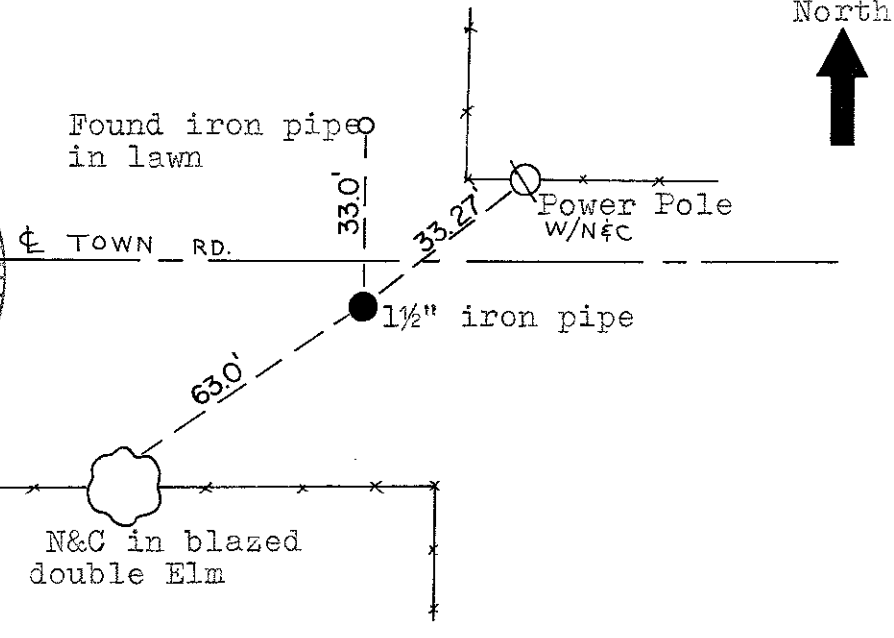
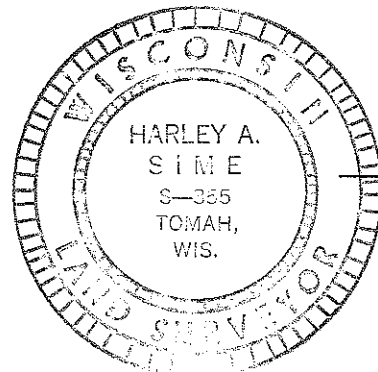
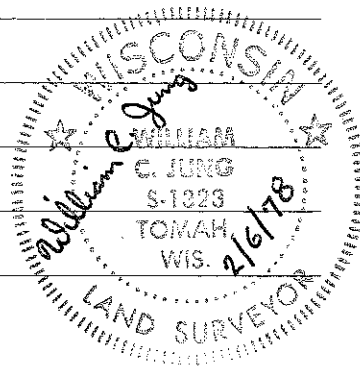
Description of corner and witness monuments, references and accessories used to perpetuate the original or re-established location of this corner:

Found a 1 1/2" iron pipe, down 5", 4' ± North of edge of asphalt.

Witnesses to corner location:

W. Jung

D. Malliet



Approved: Harley Sime
County Surveyor

SURVEY CONTROL ORDER

Horizontal	_____
Vertical	_____

WISCONSIN COORDINATE SYSTEM

Corner	East (X)	North (Y)	Elevation (Z)	Zone
Control Sta. Name				

City, Village or Town Byron

County of Monroe