

41801240000

I, Harley A. Sime, do hereby certify that on the twentieth day of May 1982, I found (evidence) ~~no evidence~~ of the Northeast corner of Section 25, T 18 N, R 1 E Fourth Principal Meridian, and I re-established said corner according to the Wisconsin Statutes as shown and described hereon.

History of corner establishment since Original Government Survey

Kennedy was here in November of 1927 and set an iron at the corner.

Description of corner evidence found:

Found a 1 1/4" iron pipe at the corner in an old E-W fence, up 3'±. Accepted this pipe as the corner.

Dated this 4th day of June 1982.

Harley A. Sime - R. L. S. 355

County Surveyor, Monroe County

Approved: HARLEY A. SIME
MONROE CO. SURVEYOR

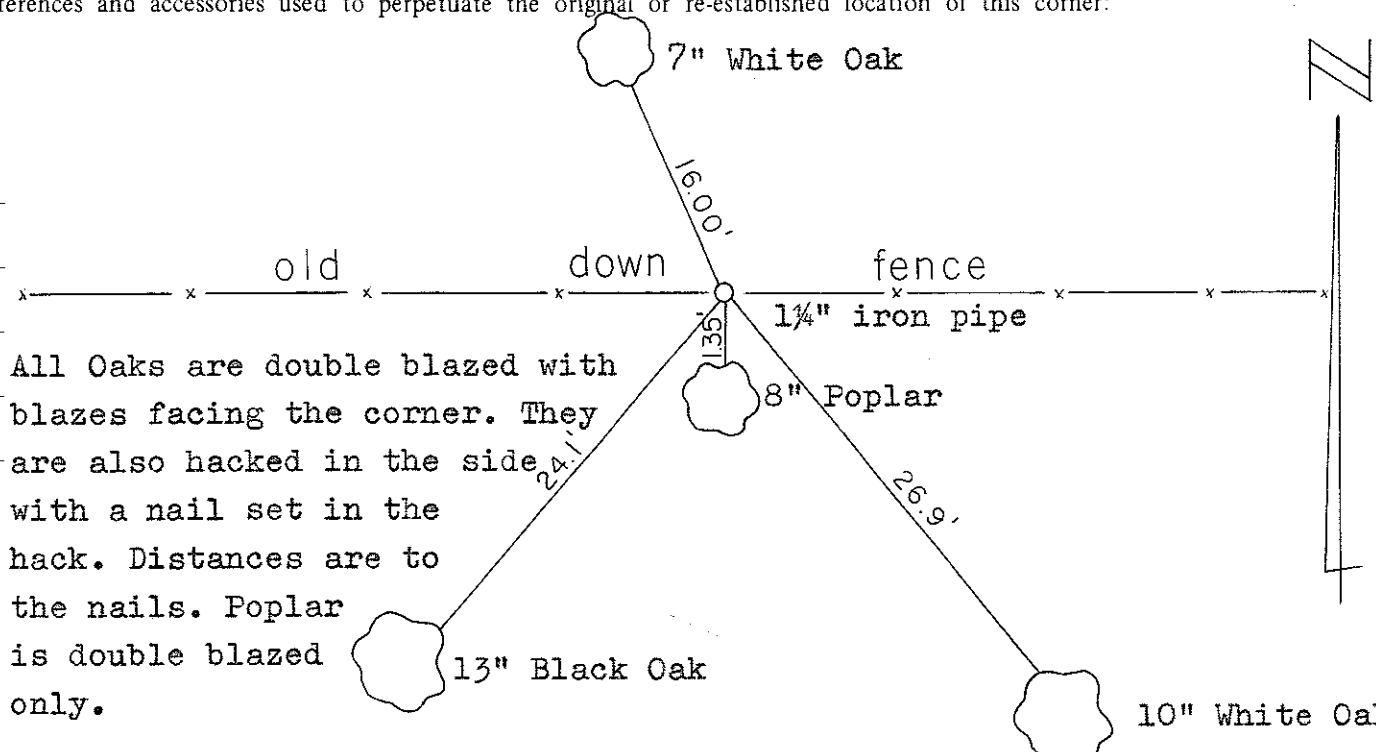
Description of corner and witness monuments, references and accessories used to perpetuate the original or re-established location of this corner:

Witnesses to corner location:

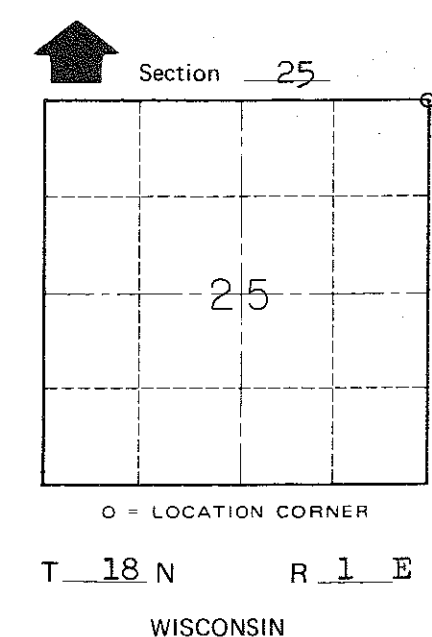
Bryan Meyer - Crew Chief

Gary Dechant

COUNTY SURVEYOR FORM NO



All Oaks are double blazed with blazes facing the corner. They are also hacked in the side with a nail set in the hack. Distances are to the nails. Poplar is double blazed only.



SURVEY CONTROL ORDER

Horizontal	_____
Vertical	_____

WISCONSIN COORDINATE SYSTEM

Corner	East (X)	North (Y)	Elevation (Z)	Zone
Control Sta. Name				

~~City, Village or~~ Town of Byron
County of Monroe