

#79

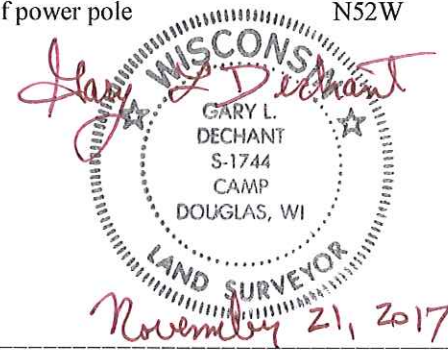
**U.S. PUBLIC LAND CORNER
MAINTENANCE**

**Corner ID : E1/4 Sec. 23, T18N-R1E
41801232000**

DATE	CREW	MONUMENT TYPE -----
October 23, 2017	Zachariah P.Dechant Gary L. Dechant	Existing Harrison intact near road P. I. Down 4". By west post of road sign. Set survey sign 1' NW. Ties gone except power pole NW

References:

	<u>Bearing</u>	<u>Distance</u>
1) Set 3/4"x24"round iron bar, down 8"	N26E	58.34'
2) Set 3/4"x24" round iron bar, down 8"	S70E	35.29 '
3) Set 3/4"x24" round iron bar, down 8"	S9W	28.90'
4) Set 3/4"x24" round iron bar, down 4", south of power pole	N52W	53.10'



I, William C. Jung, do hereby certify that on the 31st day of March 19 76, I found (evidence) (~~no evidence~~) of the W 1/4 corner of Section 24, T 18 N, R 1 E, Fourth Principal Meridian, and I re-established said corner according to the Wisconsin Statutes as shown and described hereon.

Dated this 6th day of Feb. 1978.

William C. Jung, R.L.S. 1323

Crew Chief, County Surveyor's
Title Office

History of original corner establishment:

Description of corner evidence found:

Found a 1" iron pipe used in previous surveys. Drove the pipe down and set a Harrison on top of it.

See Reverse Side For Maintenance

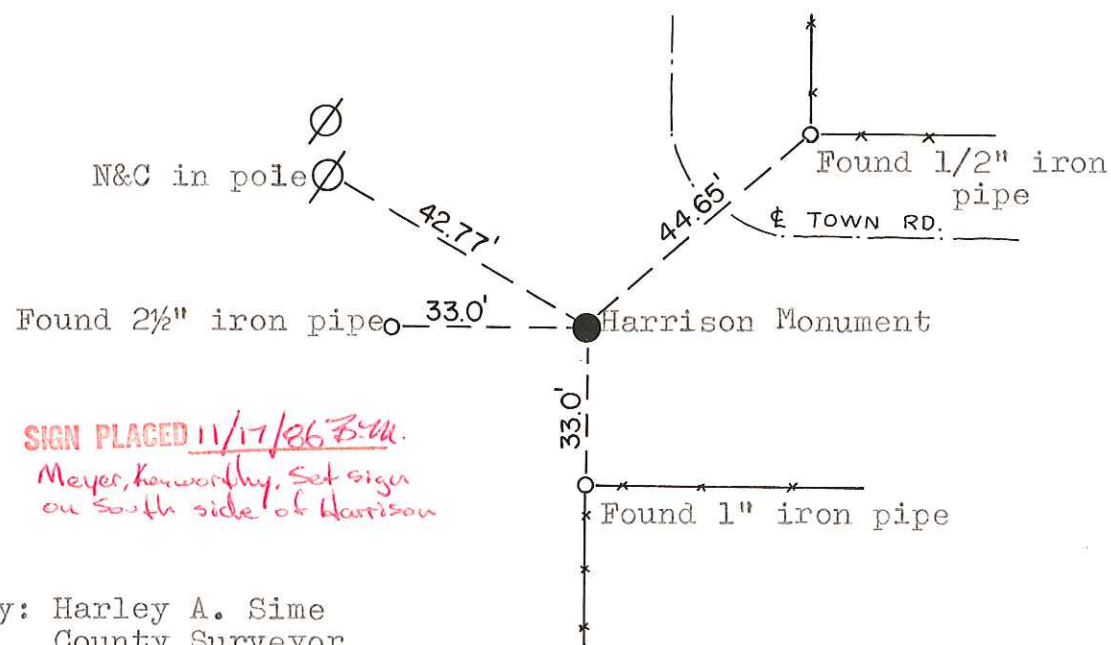
Description of corner and witness monuments, references and accessories used to perpetuate the original or re-established location of this corner:

Witnesses to corner location:

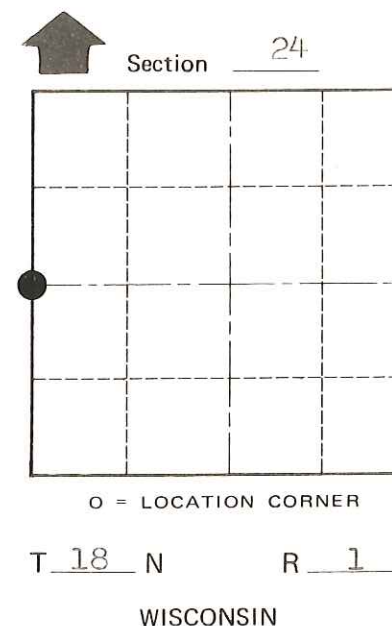
W. Jung

D. Malliet

North ↑



SIGN PLACED 11/17/86 B.M. Meyer, Kerkowichy. Set sign on south side of Harrison



O = LOCATION CORNER

T 18 N R 1 E

WISCONSIN

Approved by: Harley A. Sime
County Surveyor

SURVEY CONTROL ORDER

Horizontal	_____
Vertical	_____

WISCONSIN COORDINATE SYSTEM

Corner	East (X)	North (Y)	Elevation (Z)	Zone
Control Sta. Name				

City, Village or Town Byron

County of Monroe

COUNTY SURVEYOR FORM NO. 1

