

84

U.S. PUBLIC LAND CORNER MAINTENANCE

Corner ID : N1/4 Sec. 26, T18N-R1E

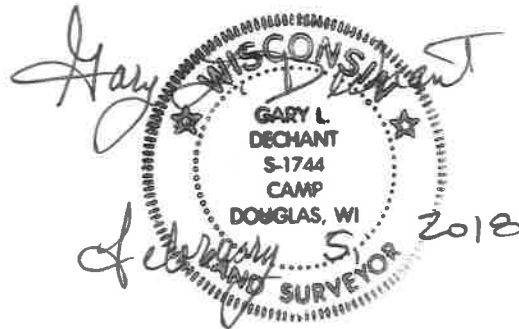
41801230020

<u>DATE</u>	<u>CREW</u>	<u>MONUMENT TYPE -----</u>
February 5, 2018	Zachariah P.Dechant Gary Dechant	Existing Harrison intact, 3' north center line Frontier Ave. 10' east of driveway fire number 32425 Frontier Ave. down 1"

References:

	<u>Bearing</u>	<u>Distance</u>
1) Set 3/4"x24" round iron bar, down 4" in marshy area	N22E	71.94'
2) Set 1/4"x24" round iron bar, flush, 5' NW of lone 2" White Pine	S20E	69.55'
3) Set 1/4"x24" round iron bar, flush", 5' NE of 10" Red Pine, 18' west of drive	S22W	69.94'
4) Set 3/4"x24" round iron bar, down 4" in marshy area, on line with north set of power poles	N20W	67.11'

Harrison and reference markers set on straight lines



41801230020



I, Harley A. Sime, do hereby certify that on the twentieth day of May 19 82 I found ~~evidence~~ (no evidence) of the North 1/4 corner of Section 26, T 18 N, R 1 E Fourth Principal Meridian, and I re-established said corner according to the Wisconsin Statutes as shown and described hereon.

Dated this 27th day of May 19 82.
Harley A. Sime - R. L. S. 355

County Surveyor, Monroe County
Approved: HARLEY A. SIME
MONROE CO. SURVEYOR

History of corner establishment since Original Government Survey

Henry Schroeder was here in December of 1889.

Description of corner evidence found:

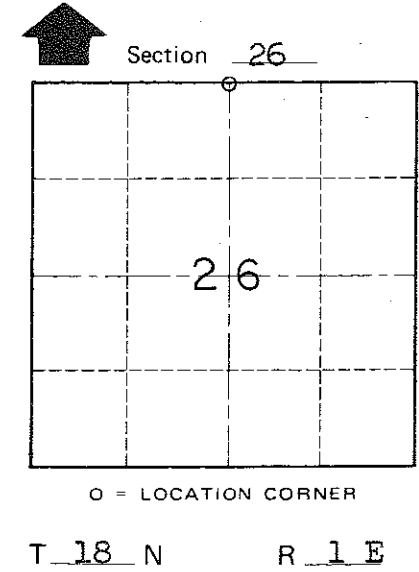
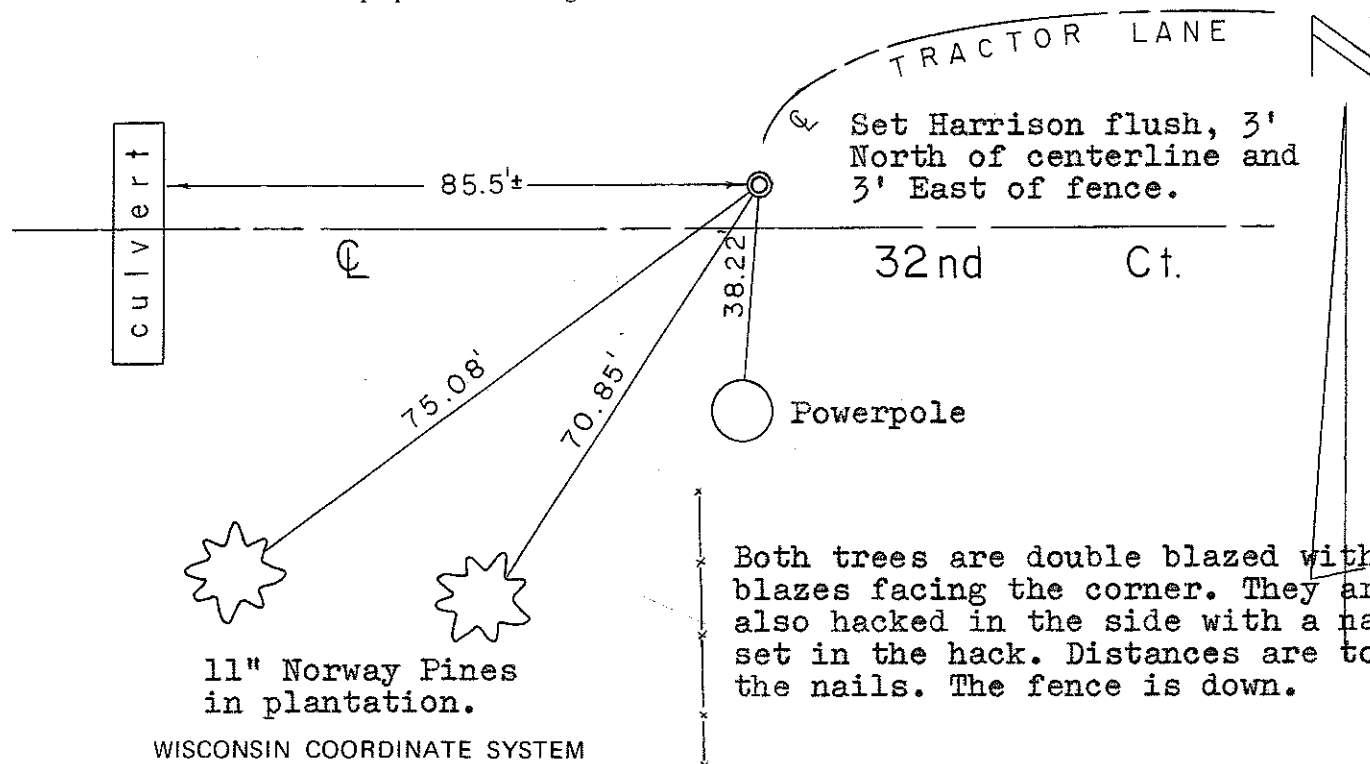
Set on line and equidistant between the Northeast and Northwest corners of Section 26. The distances East and West to the Section corners match the Original notes within 3'.

Description of corner and witness monuments, references and accessories used to perpetuate the original or re-established location of this corner:

Witnesses to corner location:

Bryan Meyer - Crew Chief

Gary Dechant



Both trees are double blazed with blazes facing the corner. They are also hacked in the side with a nail set in the hack. Distances are to the nails. The fence is down.

PLACED
COUNTY SURVEYOR'S
SIGN
6-22-87

COUNTY SURVEYOR FORM NO. 1

SURVEY CONTROL ORDER

Horizontal	_____
Vertical	_____

WISCONSIN COORDINATE SYSTEM

Corner	East (X)	North (Y)	Elevation (Z)	Zone
Control Sta. Name				

~~City/Village of~~ Town of Byron
County of Monroe