

83

U.S. PUBLIC LAND CORNER MAINTENANCE

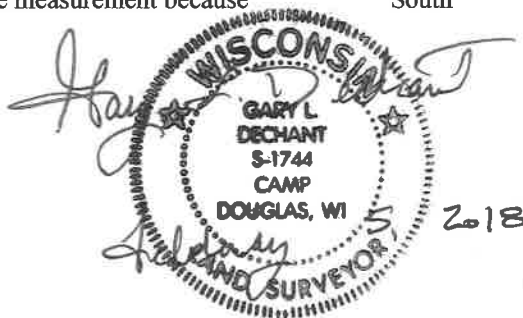
Corner ID : NE Sec. 26, T18N-R1E

41801230000

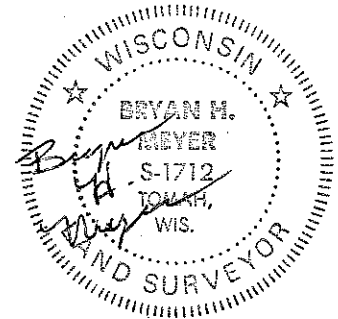
<u>DATE</u>	<u>CREW</u>	<u>MONUMENT TYPE</u> -----
February 5, 2018	Zachariah P.Dechant Gary Dechant	Existing Harrison intact, 50' south of powerline Survey sign ½' west

References:

	<u>Bearing</u>	<u>Distance</u>
1) Set 3/4"x24" round iron bar, down 4", on line with south set of power poles	N42E	51.50'
2) Set 3/4"x24" round iron bar, down 4", 4' NW of 18" White Pine (BT)	S24E	62.68'
3) Set 1/4"x24" round iron bar, down 4", 4' NE of 10" White Oak (BT)	S30W	53.20'
4) Set 3/4"x24" round iron bar, 9' SE of 14" double Maple (BT)	S66W	28.40'
5) Existing 3/4" iron bar, did not get accurate measurement because of large white oak 8' north	South	15'



41801230000



I, Harley A. Sime do hereby certify that on the seventeenth day of May 19 82, I found (no evidence) of the Northeast corner of Section 26, T 18 N, R 1 E Fourth Principal Meridian, and I re-established said corner according to the Wisconsin Statutes as shown and described hereon.

History of corner establishment since Original Government Survey
Henry Schroeder was here in December of 1889.

Dated this 27th day of May 19 82.
Harley A. Sime - R. L. S. 355

Description of corner evidence found:

Found 14" Black Oak with wire wrapped around, which was apparently used as the fence corner. This tree fits other Section data and therefore accepted it as the corner.

County Surveyor, Monroe County
Approved: HARLEY A. SIME
MONROE CO. SURVEYOR

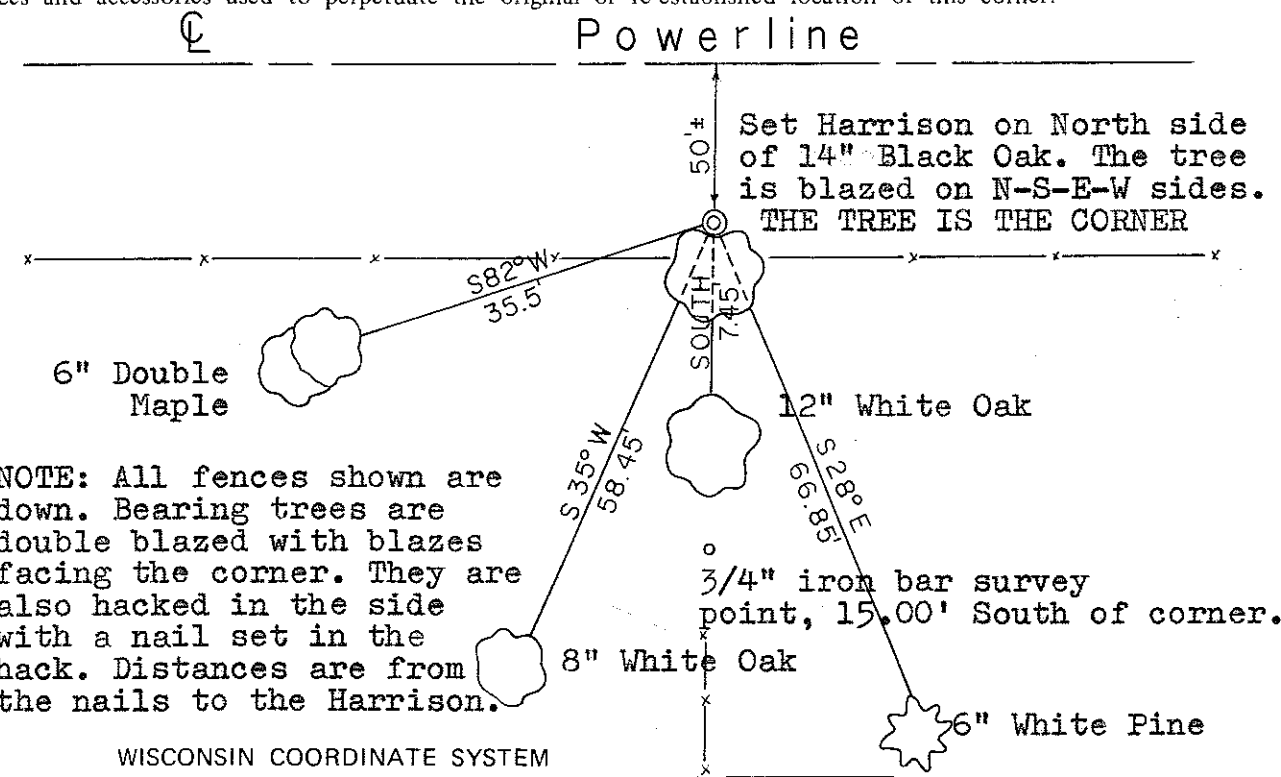
COUNTY SURVEYOR FORM NO. 1

Description of corner and witness monuments, references and accessories used to perpetuate the original or re-established location of this corner:

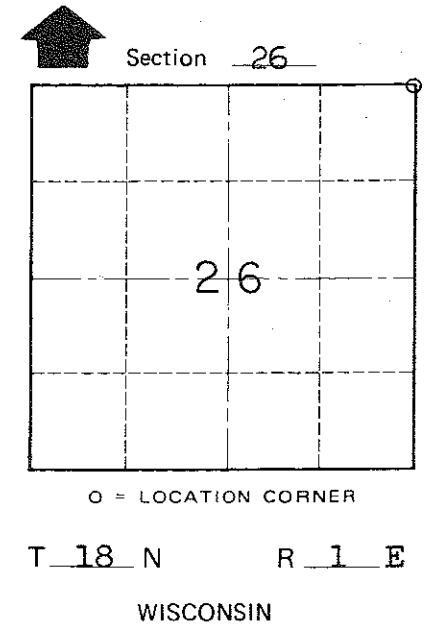
Witnesses to corner location:

Bryan Meyer - Crew Chief

Gary Dechant



NOTE: All fences shown are down. Bearing trees are double blazed with blazes facing the corner. They are also hacked in the side with a nail set in the hack. Distances are from the nails to the Harrison.



PLACED
COUNTY SURVEYOR'S
SIGN 6-22-87

SURVEY CONTROL ORDER	
Horizontal	_____
Vertical	_____

WISCONSIN COORDINATE SYSTEM

Corner	East (X)	North (Y)	Elevation (Z)	Zone
Control Sta. Name				

Byron Village of Byron Town of Byron
County of Monroe