

CERTIFICATE

CERTIFIED LAND CORNER

No. 77A

41801222020

I, William C. Jung, do hereby certify that on the eighth day of May 1981, I found (evidence) (~~no evidence~~) of the Center 1/4 corner of Section 22, T 18 N, R 1 E, Fourth Principal Meridian, and I re-established said corner according to the Wisconsin Statutes as shown and described hereon.

History of original corner establishment:

Donald Mulock was at this corner in August of 1967 but set no monument.

Description of corner evidence found:

Malliet shows this corner at a computed location in his survey of September, 1977. I set the corner at his computed location. This point is at the intersection of the 1/4 lines. This is not at the same location as Mulock's.

Dated this 2nd day of Sept. 1981.

William C. Jung

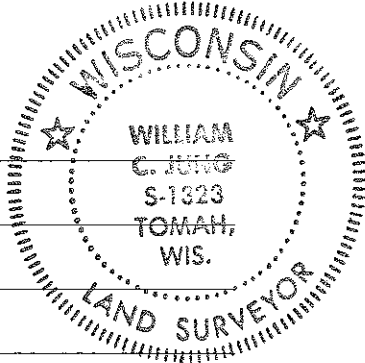
William C. Jung, R.L.S. 1323
Title

Description of corner and witness monuments, references and accessories used to perpetuate the original or re-established location of this corner:

Witnesses to corner location:

William C. Jung

Carlton R. Pietz



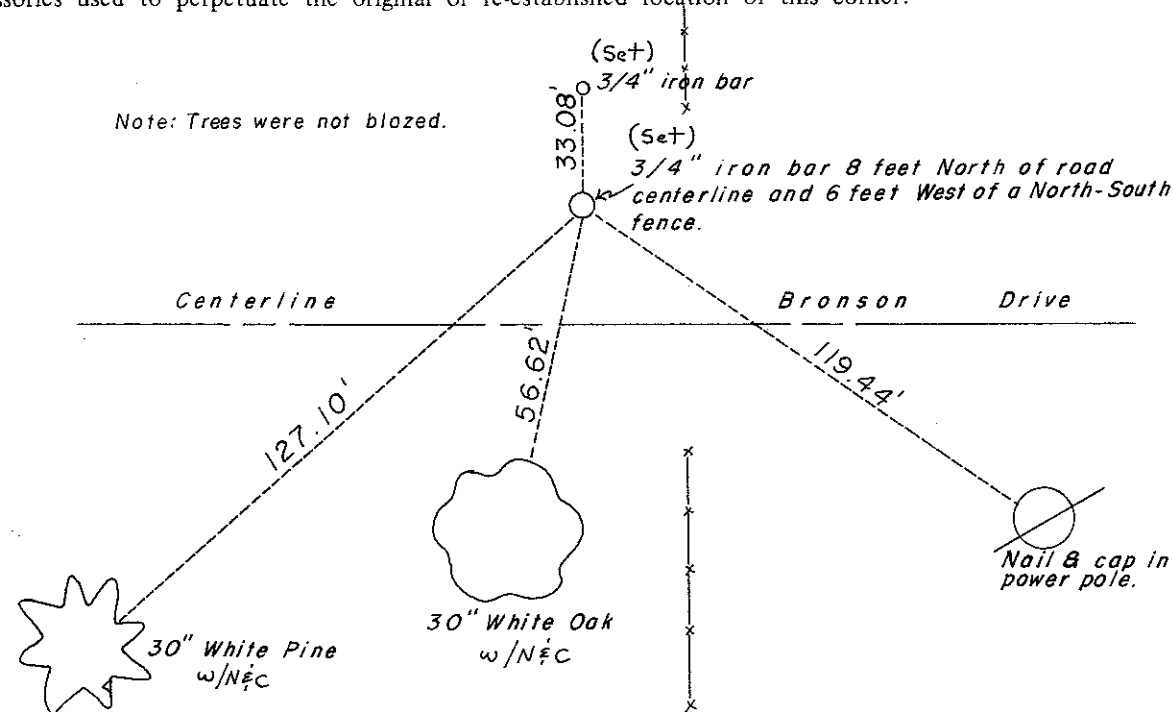
Approved: HARLEY A. SIME
MONROE CO. SURVEYOR

SURVEY CONTROL ORDER

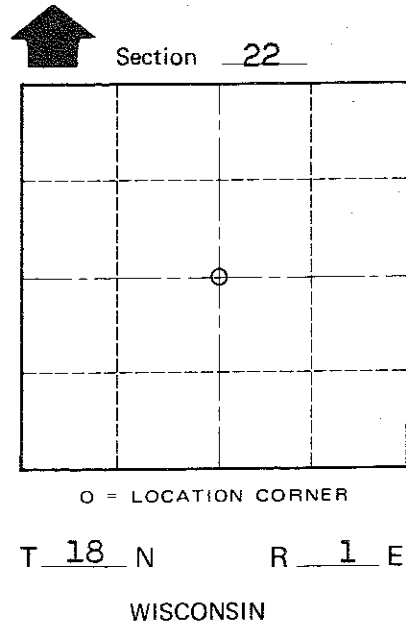
Horizontal _____

Vertical _____

Corner	East (X)	North (Y)	Elevation (Z)	Zone
Control Sta. Name				



Note: Trees were not blazed.



COUNTY SURVEYOR FORM NO. 1

~~Village~~ Town of Byron
County of Monroe