

21905012000

I, Gregory J. Hofmeister, do hereby certify that on the 23rd day of September 1982, I found ~~(evidence)~~ (no evidence) of the West Quarter corner of Section 6, T 19 N, R 4 W Fourth Principal Meridian, and I re-established said corner according to the Wisconsin Statutes as shown and described hereon.

Dated this fourth day of October 1982

Gregory J. Hofmeister
Registered Land Surveyor
Title

History of corner establishment since Original Government Survey

A survey of Section 6 by Fred Holden dated March 1904 does not mention a visit to this corner although presumably it would have been used.

Description of corner evidence found:

No evidence of corner or the original bearing trees was found. This monument was set by proportionate measurement.

Description of corner and witness monuments, references and accessories used to perpetuate the original or re-established location of this corner:

Witnesses to corner location:

Gregory J. Hofmeister

Ernest H. Koeppe

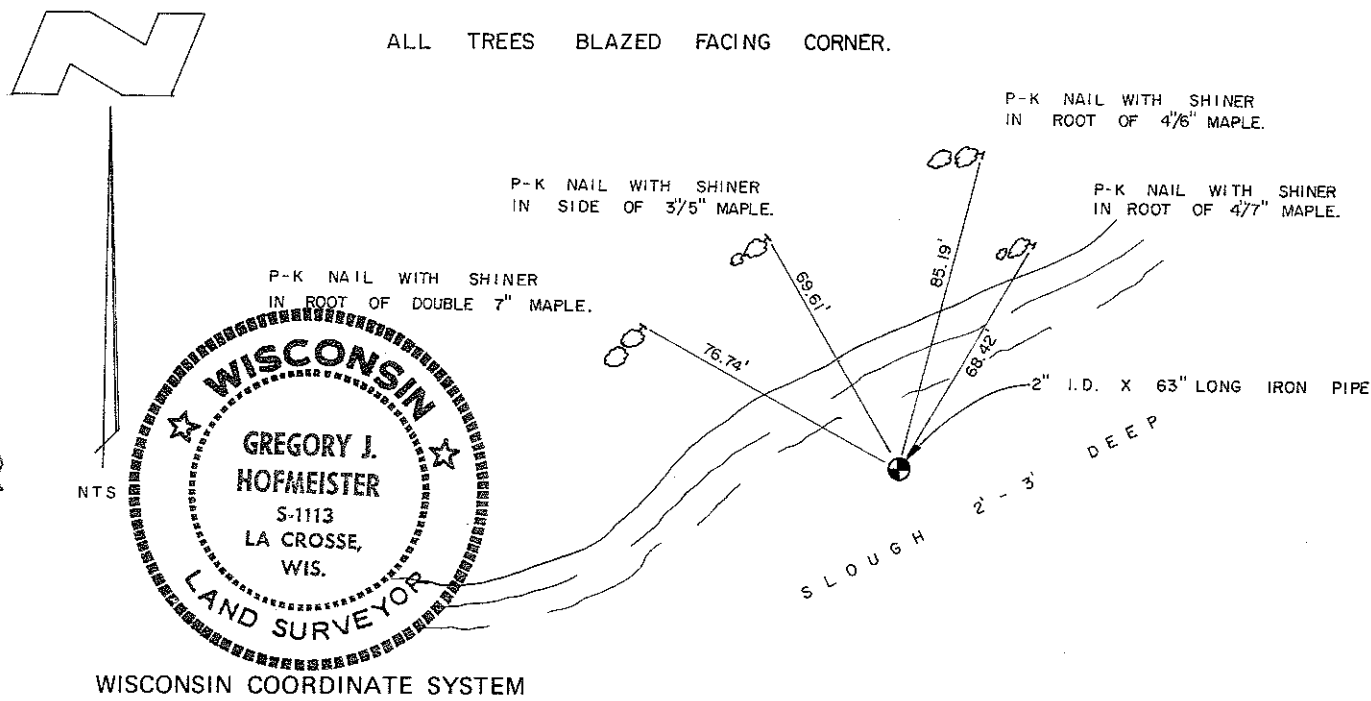
COUNTY SURVEYOR FORM NO. 1

Approved: **HARLEY A. SIME**
MONROE CO. SURVEYOR

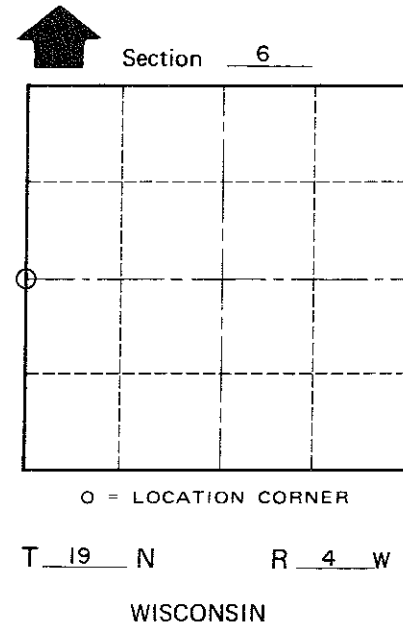
SURVEY CONTROL ORDER

| | |
|------------|-------|
| Horizontal | _____ |
| Vertical | _____ |

| Corner | East (X) | North (Y) | Elevation (Z) | Zone |
|-------------------|----------|-----------|---------------|------|
| Control Sta. Name | | | | |



WISCONSIN COORDINATE SYSTEM



City, Village or Town Little Falls
County of Monroe