

22005360000

Government Land Corner Certificate

Jackson County

TYPE OF MONUMENT: 2" x 36" Aluminum capped aluminum pipe

STATE PLANE COORDINATES: N _____ E _____

ELEVATION — M.S.L. DATUM: _____

THETA ANGLE: _____

FIELD BOOK: HSE file 79N-007 PAGE _____

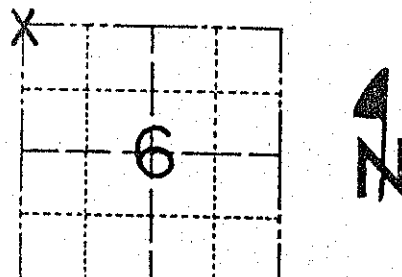
DRAWN BY: N. R. Hurlburt

CORNER NO. _____

SECTION 6

TOWN 19N

RANGE 4W



LOCATION (Indicated by 'X')

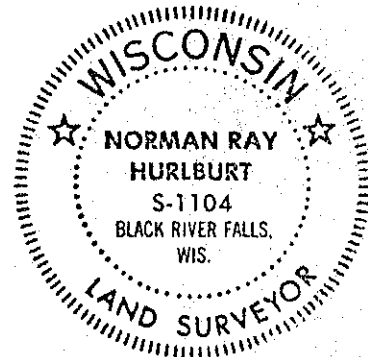
BASIS FOR MONUMENT LOCATION

See CSM 340

Show info such as: History of corner, with reference to Vol. and pg., dates, surveyor; exact description of monument replaced; if location computed, by taped or EDM traverse; landowner remarks, etc. (Use reverse side if necessary)

In Jackson County Survey Record No. 1521, Vol. 4, P. 277, dated 1941, David A. Blencoe says of this corner "Corner fence post of fences N, S, & W. Found signs of Br. Oak S89 1/2 E 719 which agreed with fence corner." The Burr Oak indicated is an original BT. In Jackson County Certified Survey No. 83, Vol. 1, Page 118, dated 1973, Duane A. Marten set a 1/4" iron bar at the fence corner. The fence South has been removed, but the fences North and West appear to have been essentially unchanged since Blencoe was there. I replaced Marten's bar with an aluminum pipe with magnetic cap, and drove a steel witness post with sign 1.0 foot East.

SEAL:



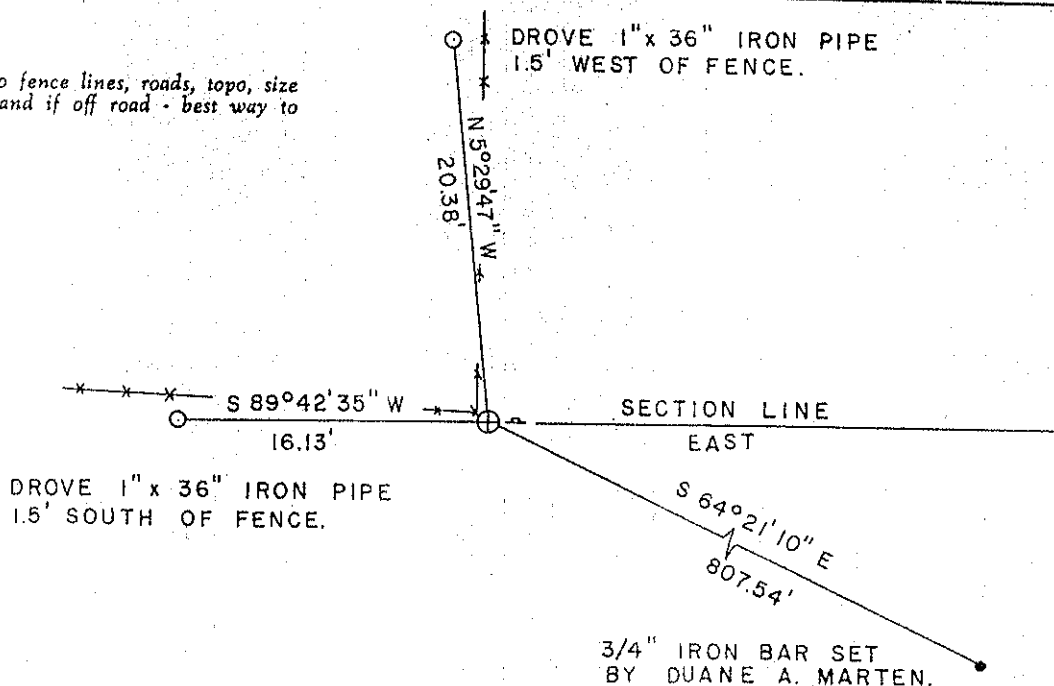
DATA SHOWN HERE ON CERTIFIED CORRECT:

Norman R. Hurlburt
Registered Land Surveyor

DATE: May 23, 1980

TIE SKETCH

Show at least four ties, also fence lines, roads, topo, size and type of witness trees and if off road - best way to arrive at corner.



SCALE 1" = 10'