

21905140020

I, Lawrence Feddersen, do hereby certify that on the 30th day of June 19 94, I found ~~(XXXXXX)~~ (no evidence) of the North Quarter corner of Section 23, T 19 N, R 5W Fourth Principal Meridian, and I re-established said corner according to the Wisconsin Statutes as shown and described hereon.

Dated this 1st day of August 19 94.

Lawrence G. Feddersen

Registered Land Surveyor
Title

History of corner establishment since Original Government Survey

No record of corner restoration/re-establishment since the original government survey.

Description of corner evidence found:

No evidence was found at this corner location. The corner was re-established midway and on line between existing Harrison monuments at the Northwest and Northeast corners of Section 23.

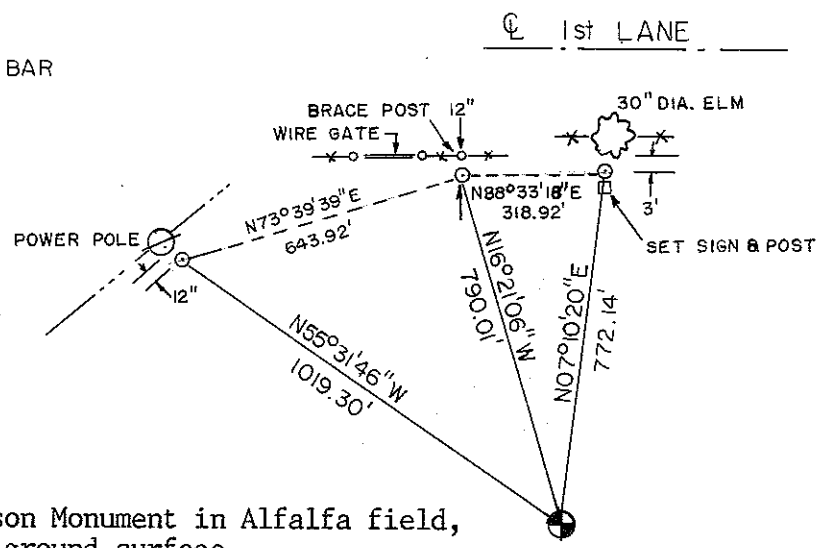
COUNTY SURVEYOR FORM NO. 1

Description of corner and witness monuments, references and accessories used to perpetuate the original or re-established location of this corner:

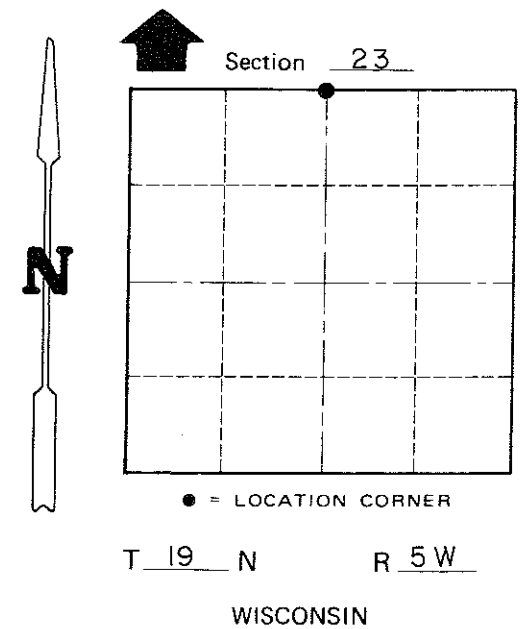
Witnesses to corner location:

Tim Jeatran
Douglas J. Malliet
Lawrence Feddersen

O = SET 1"x24" ROUND IRON BAR



Set Harrison Monument in Alfalfa field, 16" below ground surface



SURVEY CONTROL ORDER

Horizontal	_____
Vertical	_____

WISCONSIN COORDINATE SYSTEM

Corner	East (X)	North (Y)	Elevation (Z)	Zone
Control Sta. Name				

City, Village or Town of Little Falls
County of Monroe