

CERTIFICATE

CERTIFIED LAND CORNER

No. 60

21905132000

I, Harley A. Sime, do hereby certify that on the 8 day of April 1976, I found (evidence) ~~(no evidence)~~ of the E 1/4 corner of Section 13, T 19 N, R 5 W Fourth Principal Meridian, and I re-established said corner according to the Wisconsin Statutes as shown and described hereon.

History of original corner establishment:

Dated this 7TH day of Feb. 1978.

Description of corner evidence found:

Accepted the location of the existing east - west fence and put the corner on line between the NE and SE corners of Sec.13.

Approved: HARLEY A. SIME
MONROE CO. SURVEYOR

County Surveyor
Title

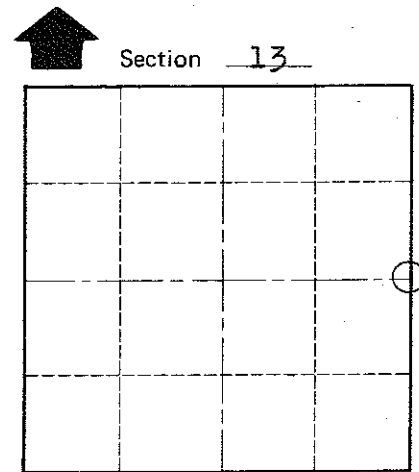
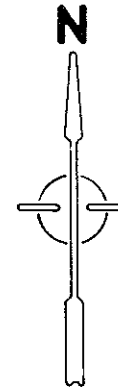
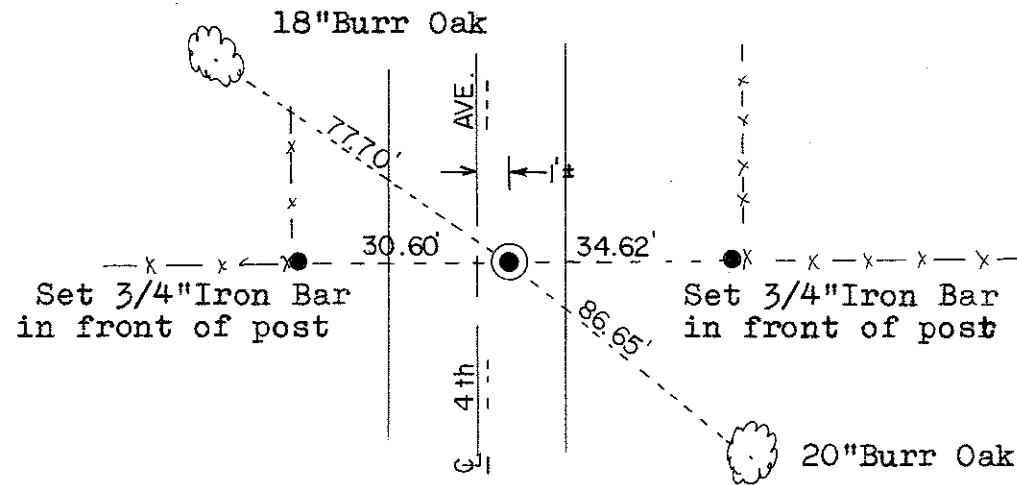
Description of corner and witness monuments, references and accessories used to perpetuate the original or re-established location of this corner:
Set Harrison Monument down 2"

Witnesses to corner location:

Douglas Malliet, Crew Chief

W.C.Jung *W.C. Jung*

A. Lueck



O = LOCATION CORNER

T 19 N R 5 W

WISCONSIN

Trees Double Blazed and N&C's set.

SURVEY CONTROL ORDER

Horizontal	_____
Vertical	_____

WISCONSIN COORDINATE SYSTEM

Corner	East (X)	North (Y)	Elevation (Z)	Zone
Control Sta. Name				

~~###/###/##~~ or Town Little Falls

County of Monroe

COUNTY SURVEYOR FORM NO. 1