

# CERTIFIED LAND CORNER

I, DWAYNE M. HEFNER, do hereby certify that on the FOURTH day of July, 2001, I did not find the W 1/4 corner of Section 12, T19N-R5W, Fourth Principal Meridian, and I re-established said corner according to the Wisconsin Statutes as shown and described hereon.

Certified this 15th day of July 2001.

Dwayne M. Hefner, RLS 2494

REGISTERED LAND SURVEYOR

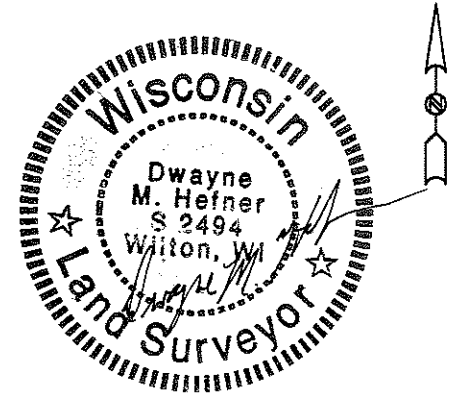
TITLE  
*Dwayne M. Hefner*

Description of corner and witness monuments, references and accessories used to perpetuate the original or re-established location of this corner:

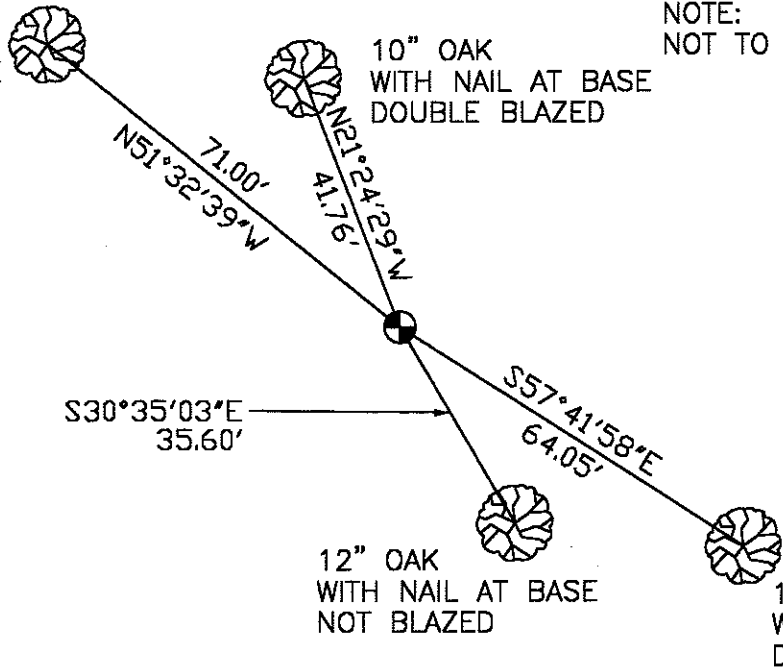
Witnesses to corner location:  
Dwayne M. Hefner, RLS  
Larry Handschy  
Bill Zelmer

History of corner establishment since Original Government Survey  
 None since original government survey.

Description of corner evidence found:  
 Re-set corner at proportional distance between Southwest and Northwest corners, no evidence found. Land owners never remember any fences being at said corner.

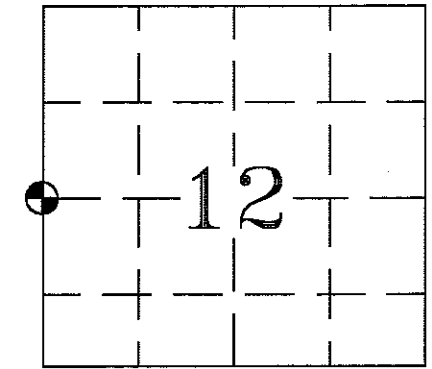


NOTE:  
 NOT TO SCALE -- ALL DISTANCES HORIZONTAL



⊕ = Set Cast Iron Harrison Monument at Corner.

Section 12, T19N, R5W



⊕ = LOCATION OF CORNER

TOWN OF LITTLE FALLS,  
 MONROE COUNTY, WI

SURVEY CONTROL ORDER

HORIZONTAL				
VERTICAL				
CORNER	EAST (X)	NORTH (Y)	ELEVATION (Z)	ZONE
CONTROL STA. NAME				