

CERTIFICATE

CERTIFIED LAND CORNER

No. 44

21905110020

I, Lawrence A. Feddersen, do hereby certify that on the eleventh day of July 19 95, I found (evidence) (~~XXXXXXXXXX~~) of the North Quarter corner of Section fourteen, T 19 N, R 5 W Fourth Principal Meridian, and I re-established said corner according to the Wisconsin Statutes as shown and described hereon.

Dated this 24 day of July 19 95.

Lawrence A. Feddersen

Registered Land Surveyor
Title

History of corner establishment since Original Government Survey

No record of re-established corner.

Description of corner evidence found:

Accepted the intersection of a downed woven wire fence as best available evidence.

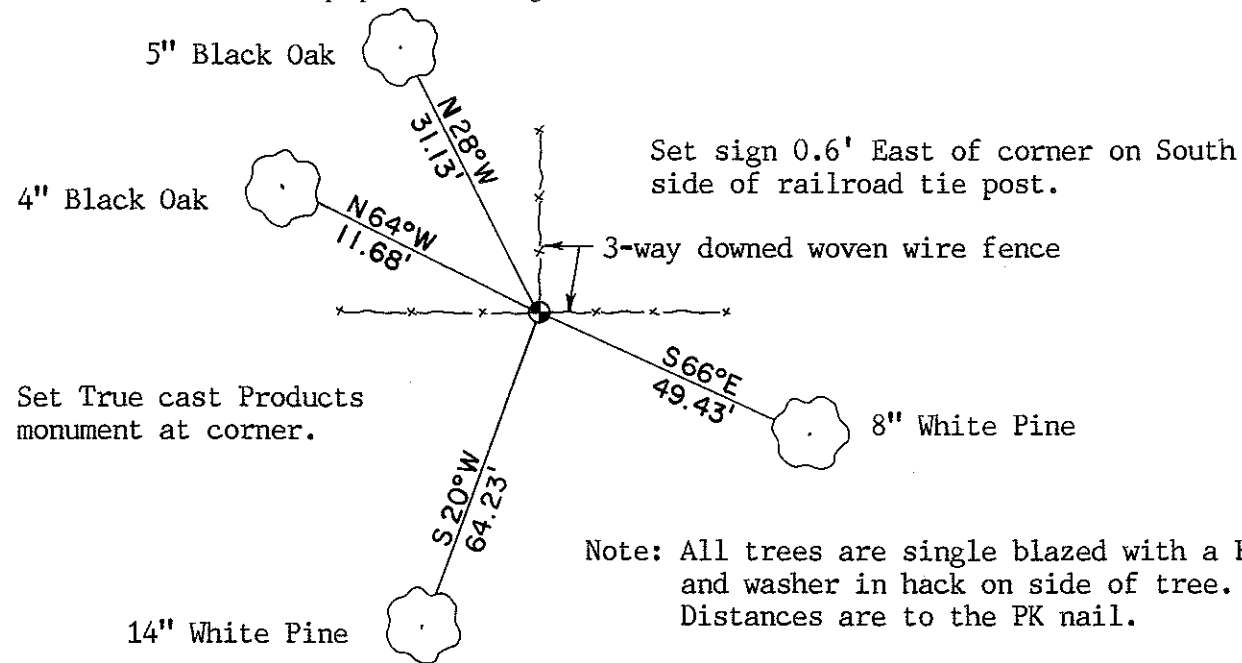
Description of corner and witness monuments, references and accessories used to perpetuate the original or re-established location of this corner:

Witnesses to corner location:

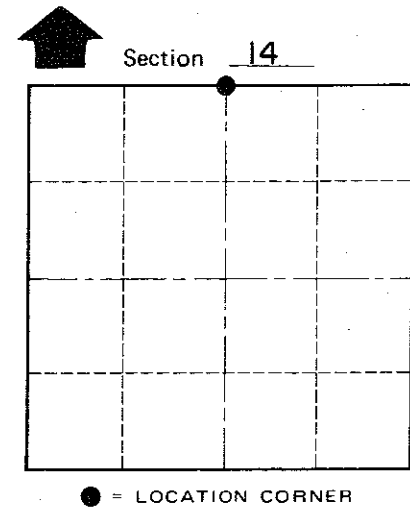
Lawrence A. Feddersen

Douglas J. Malliet

Timothy J. Jeatran



Note: All trees are single blazed with a PK nail and washer in hack on side of tree. Distances are to the PK nail.



T 19 N R 5 W
WISCONSIN

COUNTY SURVEYOR FORM NO. 1

SURVEY CONTROL ORDER

Horizontal	_____
Vertical	_____

WISCONSIN COORDINATE SYSTEM

Corner	East (X)	North (Y)	Elevation (Z)	Zone
Control Sta. Name				

XXXXXXXXXXXX Town of Little Falls
XXXXXXXXXXXX

County of Monroe