

CERTIFICATE

I, Dallas E. Wilhite, do hereby certify that on the 5th day of April, 2007, I found (evidence)(no evidence) of the South 1/4 corner of Section 10, T19N, R5W, Fourth Principal Meridian, and I re-established said corner according to the Wisconsin Statutes as shown and described hereon.

Dated this 30th day of November, 2011.

Dallas E. Wilhite, RLS-2119

Title

CERTIFIED LAND CORNER

History of corner establishment since Original Government Survey

No. 46

No history of corner since original government survey.

Description of corner evidence found:

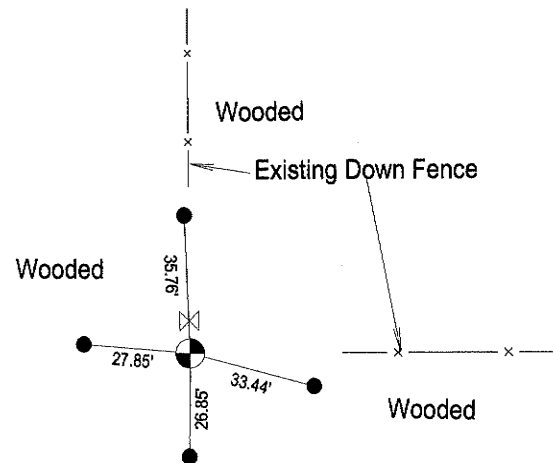
I could not find any evidence of the original government corner. I did find a down fence running North and East from this location. The intersection of these fences fits original government distances with in 4 feet +-. I accepted this location as the best available evidence and set a cast iron harrison monument at this location.

Description of corner and witness monuments, references and accessories used to perpetuate the original or re-established location of this corner:

Set Cast Iron Harrison Monument

Witnesses to corner location:

Dallas E. Wilhite



LEGEND

- ⊗ Set Cast Iron Harrison Monument
- Set 0.25' O.D. x 12" Iron Bar
- ⊗ Set Sign & Post 1' North of corner

