

I, DWAYNE M. HEFNER, do hereby certify that on the FOURTH day of July, 2001, I did not find the N.W. corner of Section 12, T19N-R5W, Fourth Principal Meridian, and I re-established said corner according to the Wisconsin Statutes as shown and described hereon.

Certified this 15th day of July 2001.  
Dwayne M. Hefner, RLS 2494

REGISTERED LAND SURVEYOR  
TITLE

*Dwayne M. Hefner*

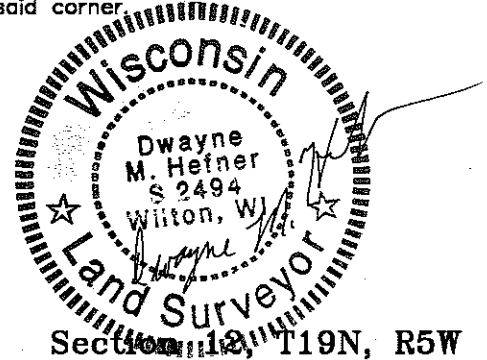
Description of corner and witness monuments, references and accessories used to perpetuate the original or re-established location of this corner:

Witnesses to corner location:  
Dwayne M. Hefner, RLS  
Larry Handschy  
Bill Zelmer

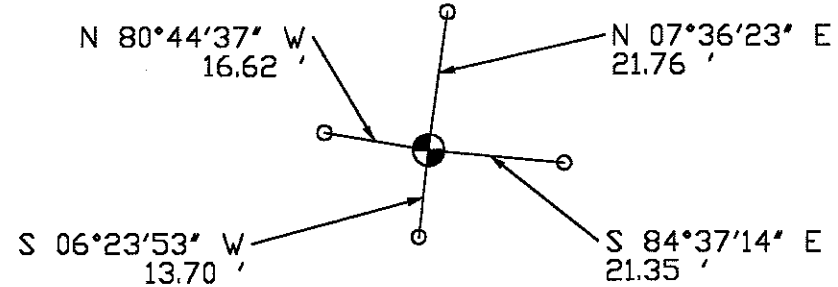
### CERTIFIED LAND CORNER

History of corner establishment since Original Government Survey  
None since original government survey.

Description of corner evidence found:  
Re-set corner at pro-rated distance with the West & Northwest corners of Section 1. This also fit best with record distances to the NE Corner and SW corner of Section 12.  
No physical evidence found. Land owners never remember any fences being at said corner.

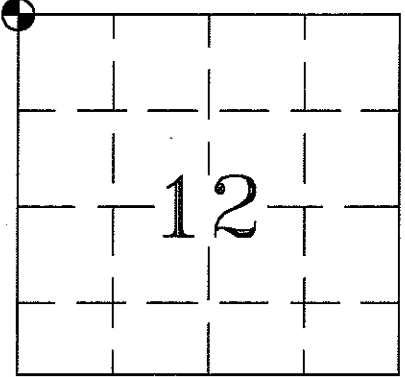


NOTE:  
SCALE 1" = 30' -- ALL DISTANCES HORIZONTAL  
No good trees at this location.



⊕ = Set Cast Iron Harrison Monument at Corner.

○ = Set 3/4" x 24" Round Iron Bars for ties.



⊕ = LOCATION OF CORNER

TOWN OF LITTLE FALLS,  
MONROE COUNTY, WI

#### SURVEY CONTROL ORDER

HORIZONTAL				
VERTICAL				
CORNER	EAST (X)	NORTH (Y)	ELEVATION (Z)	ZONE
CONTROL STA. NAME				