

I, DWAYNE M. HEFNER, do hereby certify that on the FOURTH day of July, 2001, I did not find the N 1/4 corner of Section 12, T19N-R5W, Fourth Principal Meridian, and I re-established said corner according to the Wisconsin Statutes as shown and described hereon.

Certified this 15th day of July 2001.
 Dwayne M. Hefner, RLS 2494

REGISTERED LAND SURVEYOR

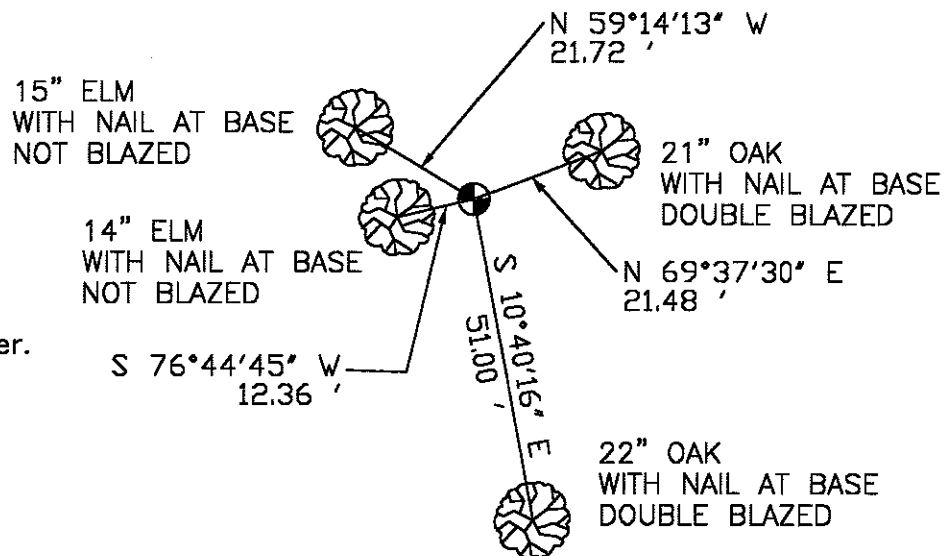
TITLE
Dwayne M. Hefner

Description of corner and witness monuments, references and accessories used to perpetuate the original or re-established location of this corner:

Witnesses to corner location:

Dwayne M. Hefner, RLS
 Larry Handschy
 Bill Zelmer

NOTE:
 NOT TO SCALE -- ALL DISTANCES HORIZONTAL



⊕ = Set Cast Iron Harrison Monument at Corner.

SURVEY CONTROL ORDER

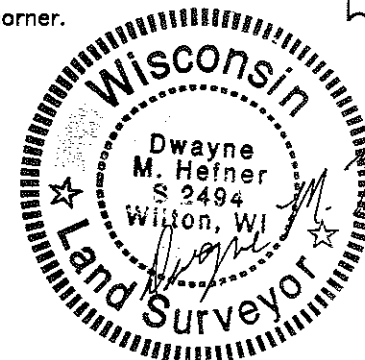
HORIZONTAL				
VERTICAL				
CORNER	EAST (X)	NORTH (Y)	ELEVATION (Z)	ZONE
CONTROL STA. NAME				

CERTIFIED LAND CORNER

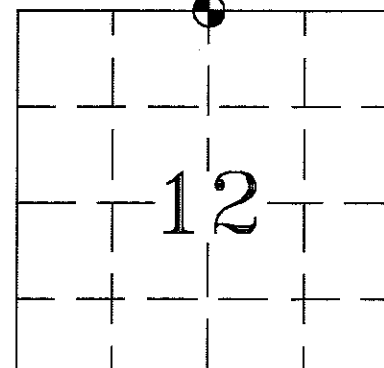
History of corner establishment since Original Government Survey
 None since original government survey.

Description of corner evidence found:

Re-set corner at proportional distance between Northwest and Northeast corners, no evidence found. Land owners never remember any fences being at said corner.



Section 12, T19N, R5W



⊕ = LOCATION OF CORNER

TOWN OF LITTLE FALLS,
 MONROE COUNTY, WI