

21905260020

I, Norman R. Hurlburt, do hereby certify that on the 11th day of April 19 83, I found ~~(evidence)~~ (no evidence) of the N¹/₄ corner of Sec. 35, T 19 N, R 5W Fourth Principal Meridian, and I re-established said corner according to the Wisconsin Statutes as shown and described hereon.

Dated this 4th day of May 19 83.

Norman R. Hurlburt

Norman R. Hurlburt Title S-1104

History of corner establishment since Original Government Survey

Geo. M. Adams used this corner in Jackson County Survey Record No. 16, Vol. 1, P. 9, dated 1861, but does not indicate any remonumentation.

Description of corner evidence found:

This corner was set at the fence corner. This position is nearly equidistant and reasonably on line between corners east and west, which are being monumented concurrently.

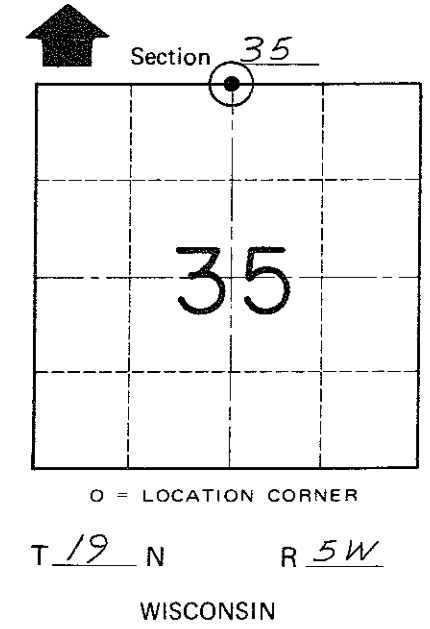
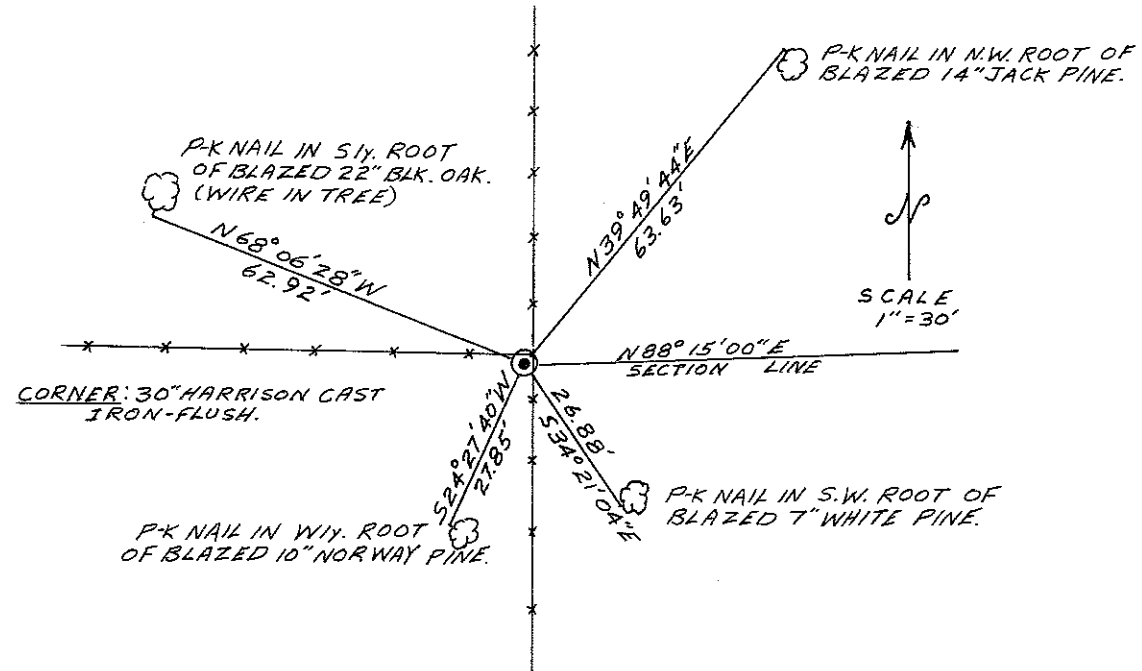
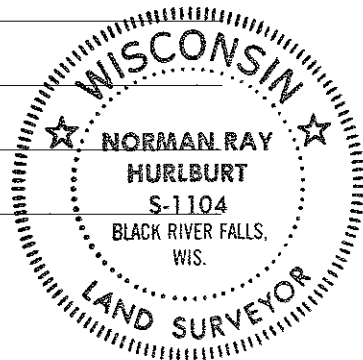
Approved: **HARLEY A. SIME**
MONROE CO. SURVEYOR

Description of corner and witness monuments, references and accessories used to perpetuate the original or re-established location of this corner:

Witnesses to corner location:

N. Hurlburt

D. Melichar



COUNTY SURVEYOR FORM NO. 1

SURVEY CONTROL ORDER

Horizontal	_____
Vertical	_____

WISCONSIN COORDINATE SYSTEM

Corner	East (X)	North (Y)	Elevation (Z)	Zone
Control Sta. Name				

City, Village or Town Little Falls
County of Monroe