

21905242000

I, William C. Jung, do hereby certify that on the 13th day of August 1983 I found (evidence) ~~(no evidence)~~ of the West 1/4 corner of Section 19, T 19 N, R 4 W Fourth Principal Meridian, and I re-established said corner according to the Wisconsin Statutes as shown and described hereon.

History of corner establishment since Original Government Survey
Kenyon (?) was at this corner in May of 1886.

Description of corner evidence found:

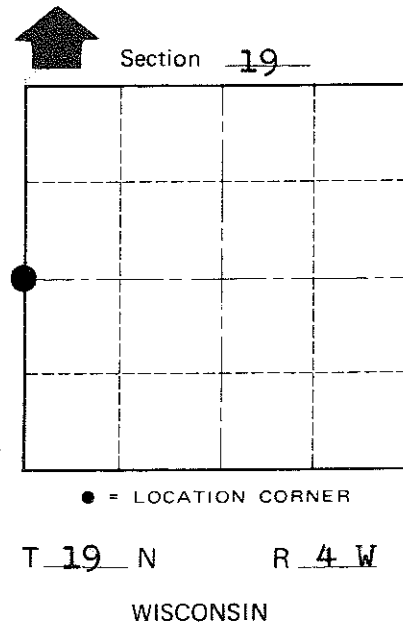
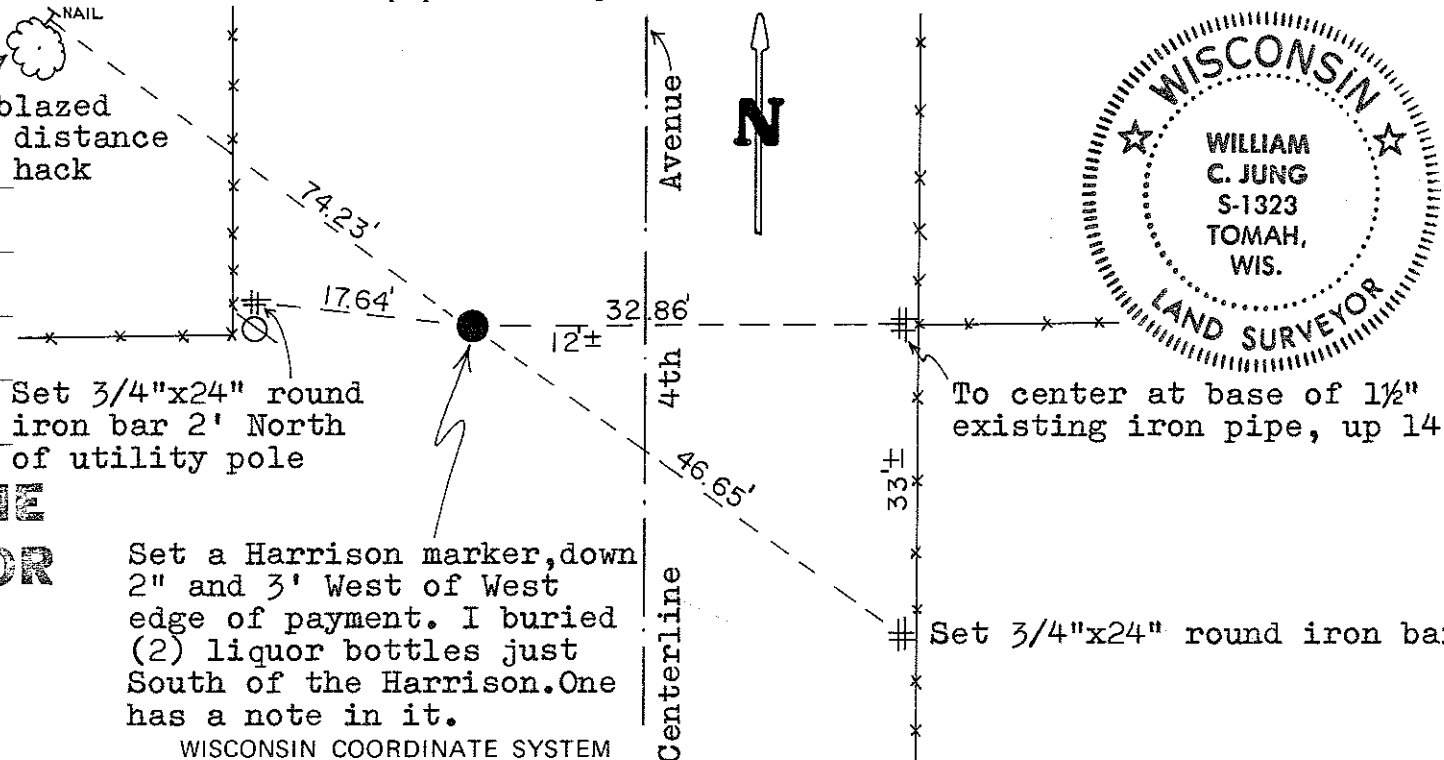
I found an unrecorded witness pipe about 2 rods East of the corner. This pipe was old, very solidly imbedded, and in my opinion was set by a surveyor. I set the corner on line with the East-West occupied fences, and on line with the NW of Section 19 and the West 1/4 of Section 30. In relation to the three miles of North-South measurements that I made along the Town Line, this corner location fits the bearings and distances very well. The pipe then also fits as a witness marker which I feel it was intended to be. When setting the corner, I dug very carefully but could not find a stake, stone, or iron.

Dated this 20th day of Sept. 1983.

William C. Jung
Deputy County Surveyor, R.L.S. 1323
Title

Description of corner and witness monuments, references and accessories used to perpetuate the original or re-established location of this corner:

Witnesses to corner location:
William C. Jung 9" single blazed jack pine, distance to nail in hack
Dallas Wilhite



Set a Harrison marker, down 2" and 3' West of West edge of payment. I buried (2) liquor bottles just South of the Harrison. One has a note in it.

WISCONSIN COORDINATE SYSTEM

Approved: **HARLEY A. SIME**
MONROE CO. SURVEYOR

SURVEY CONTROL ORDER

Horizontal	_____
Vertical	_____

Corner	East (X)	North (Y)	Elevation (Z)	Zone
Control Sta. Name				

City, Village or Town Little Falls
County of Monroe
Wisconsin

COUNTY SURVEYOR FORM NO. 1