

21905240020

I, Lawrence A. Feddersen, do hereby certify that on the 24th day of February 19 84, I found (evidence) ~~(no evidence)~~ of the S¹/₄ corner of Section 24, T 19 N, R 5 W Fourth Principal Meridian, and I re-established said corner according to the Wisconsin Statutes as shown and described hereon.

History of corner establishment since Original Government Survey

Adams, County Surveyor, was here in April of 1884 and shows he found the original post at this corner.

Description of corner evidence found:

Accepted fence corner as the best available evidence as it fits Adam's recorded distance to the SW corner within 2'+ and his recorded distance to the C¹/₄ corner within 4'+. It also fits very well to the SE corner with a distance of 2642'+.

Dated this 27th day of Feb. 19 84.

Lawrence A. Feddersen

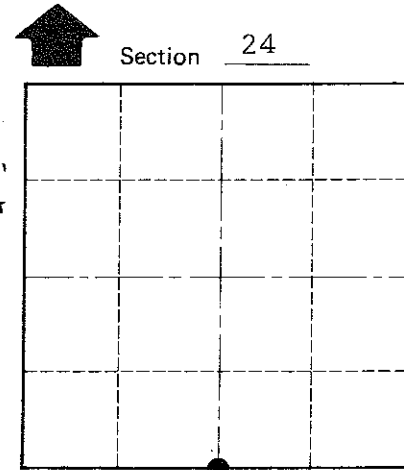
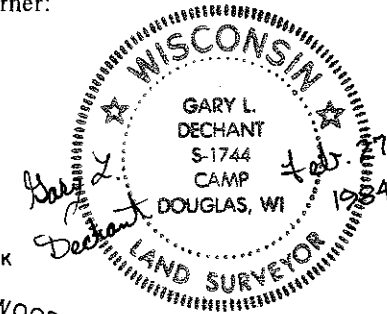
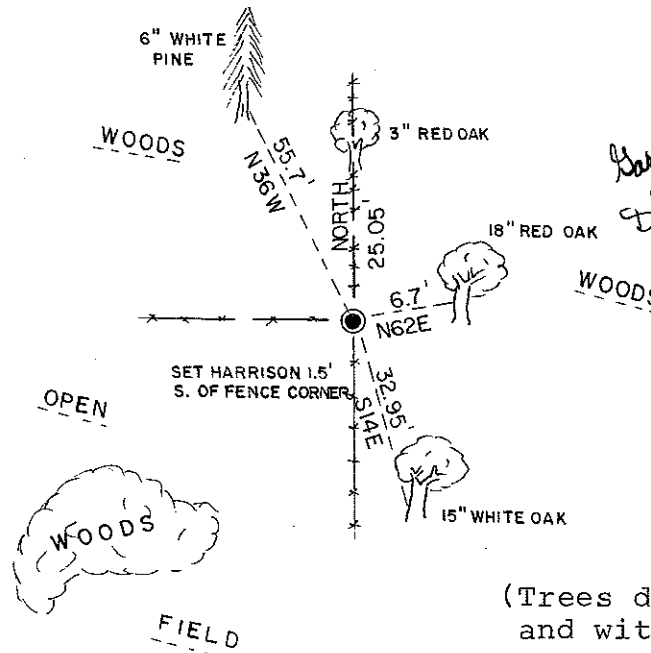
Registered Land Surveyor, S-1226
Title

Description of corner and witness monuments, references and accessories used to perpetuate the original or re-established location of this corner:

Witnesses to corner location:

Lawrence A. Feddersen

Gary L. Dechant



**Approved: HARLEY A. SIME
MONROE CO. SURVEYOR**

SURVEY CONTROL ORDER

Horizontal _____
Vertical _____

WISCONSIN COORDINATE SYSTEM

Corner	East (X)	North (Y)	Elevation (Z)	Zone
Control Sta. Name				

(Trees double blazed, scribed, and with N&C's set on side of tree)

City, Village or Town Little Falls
County of Monroe

COUNTY SURVEYOR FORM NO. 1