

21905240000

I, William C. Jung, do hereby certify that on the 13th day of August 1983, I found ~~(evidence)~~ (no evidence) of the Northwest corner of Section 30, T 19 N, R 4 W Fourth Principal Meridian, and I re-established said corner according to the Wisconsin Statutes as shown and described hereon.

History of corner establishment since Original Government Survey
In December of 1903 Fred Holden set an iron at this corner.

Dated this 20th day of Sept. 1983.

Description of corner evidence found:

I could not find Holden's iron. I would suspect that it was destroyed when the culvert to the South was put in. I put the corner in on line and equidistant between the West 1/4 of Section 19 and the West 1/4 of Section 30.

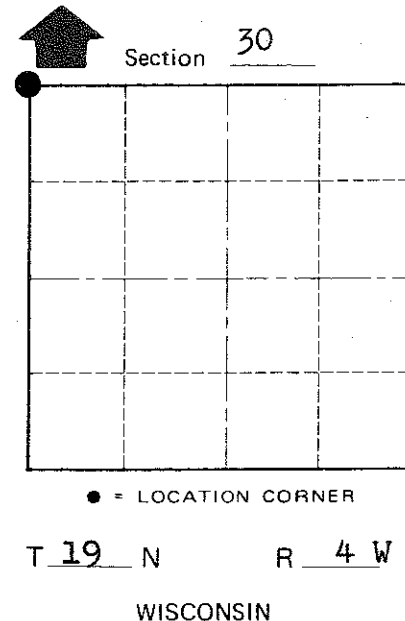
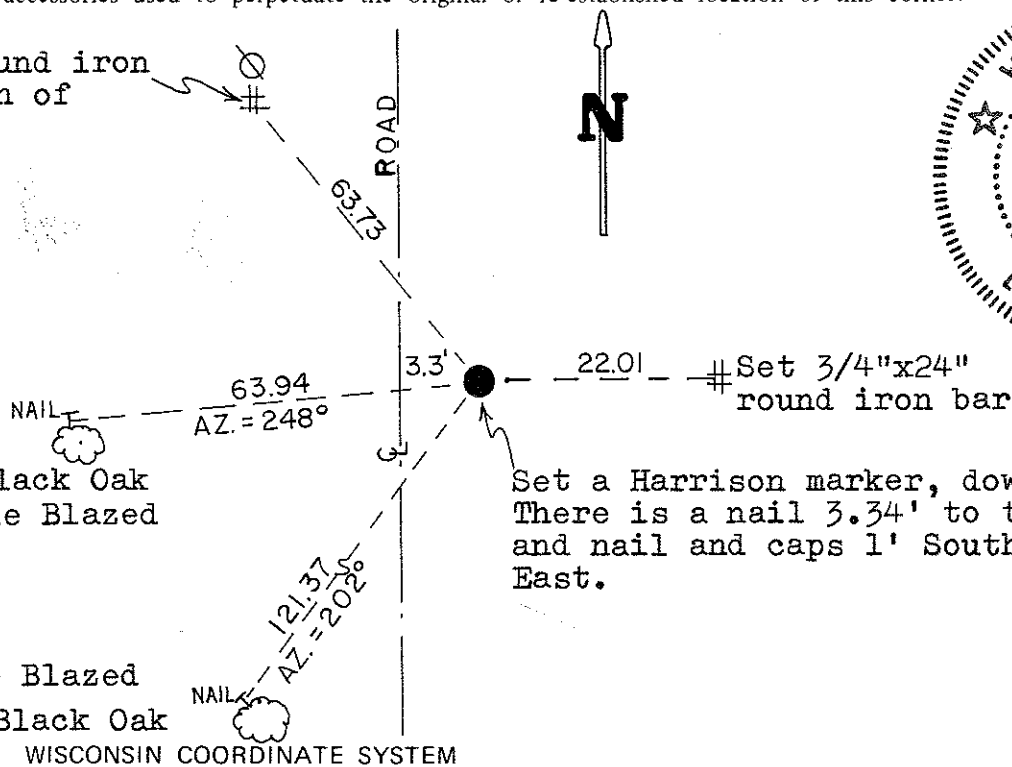
William C. Jung
Deputy County Surveyor, R.L.S. 1323
Title

COUNTY SURVEYOR FORM NO. 1

Description of corner and witness monuments, references and accessories used to perpetuate the original or re-established location of this corner:

Witnesses to corner location:
William C. Jung
Dallas Wilhite

Set a 3/4"x24" round iron bar about 3' South of utility pole.



Approved: **HARLEY A. SIME**
MONROE CO. SURVEYOR

SURVEY CONTROL ORDER

Horizontal	_____
Vertical	_____

Double Blazed
9" Black Oak
WISCONSIN COORDINATE SYSTEM

Corner	East (X)	North (Y)	Elevation (Z)	Zone
Control Sta. Name				

City, Village or Town Little Falls
County of Monroe
Wisconsin