

CERTIFICATE

CERTIFIED LAND CORNER

No. 78

**2190522000**

I, Norman R. Hurlburt, do hereby certify that on the 4<sup>th</sup> day of May 1988, I found ~~(evidence)~~ (no evidence) of the E $\frac{1}{4}$  corner of Sec. 22, T 19 N, R 5W Fourth Principal Meridian, and I re-established said corner according to the Wisconsin Statutes as shown and described hereon.

Dated this 16 day of JUNE 1988.

Norman R. Hurlburt

S-1104

Title

History of corner establishment since Original Government Survey

Mr. Kenyon was here in 1886 and found the corner, but does not indicate any durable monument or bearing trees.

Description of corner evidence found:

We found no evidence of the original corner. We re-established the corner midway on a straight line between section corners, and set a Harrison Cast Iron Monument.

COUNTY SURVEYOR FORM NO. 1

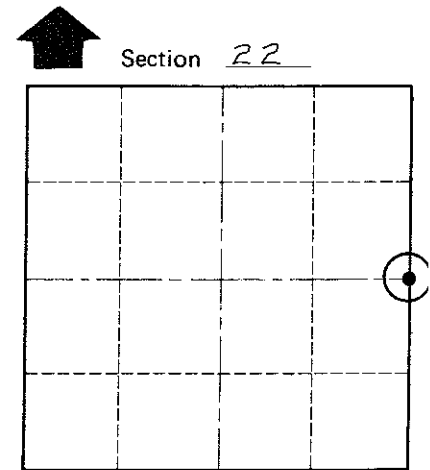
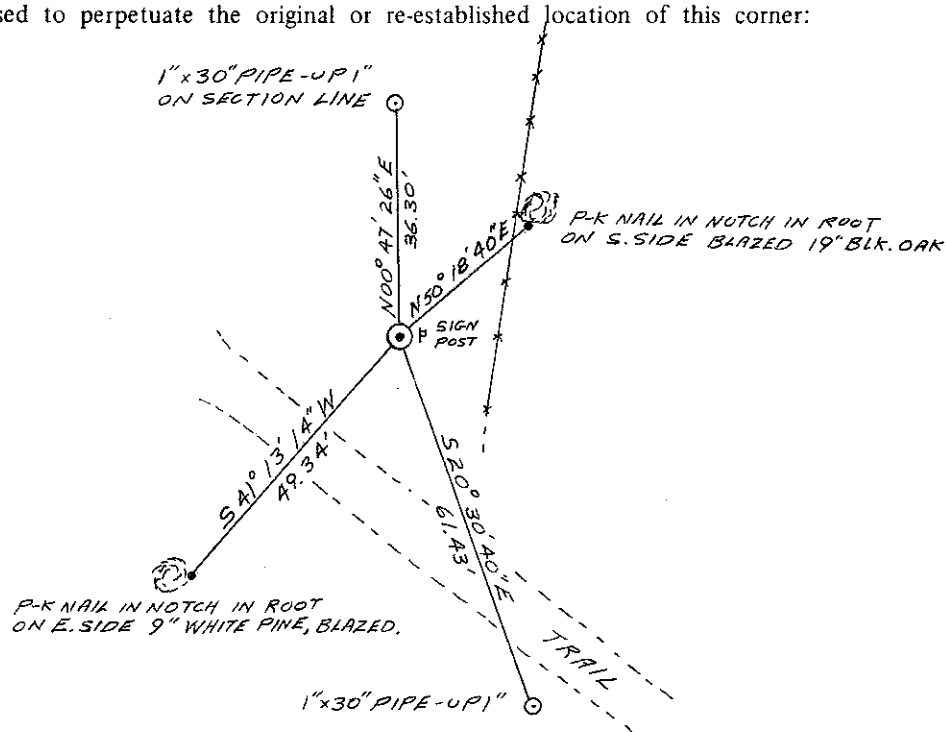
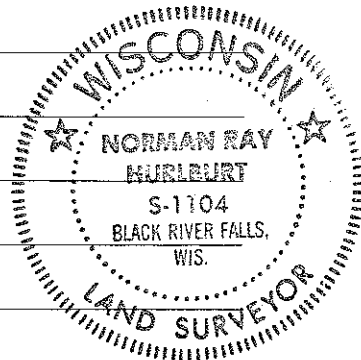
Description of corner and witness monuments, references and accessories used to perpetuate the original or re-established location of this corner:

Witnesses to corner location:

D.W. Melichar

R. Found

N.R. Hurlburt



O = LOCATION CORNER

T 19 N R 5W

WISCONSIN

SURVEY CONTROL ORDER

Horizontal	_____
Vertical	_____

WISCONSIN COORDINATE SYSTEM

Corner	East (X)	North (Y)	Elevation (Z)	Zone
Control Sta. Name				

City, Village or Town LITTLE FALLS

County of MONROE