

21905220020

I, William C. Jung, do hereby certify that on the 19th day of November 1979, I found (evidence) (~~no evidence~~) of the South 1/4 corner of Section 22, T 19 N, R 5 W Fourth Principal Meridian, and I re-established said corner according to the Wisconsin Statutes as shown and described hereon.

History of corner establishment since Original Government Survey

Schroeder (?) was at this corner in May of 1886. Harley Sime set an iron pipe at this corner in July of 1966. Fred Zietlow used this pipe in his survey of July, 1968.

Description of corner evidence found:

Found the corner of record, removed the iron pipe and replaced it with Harrison marker.

Dated this 4th day of Feb. 1981

William C. Jung

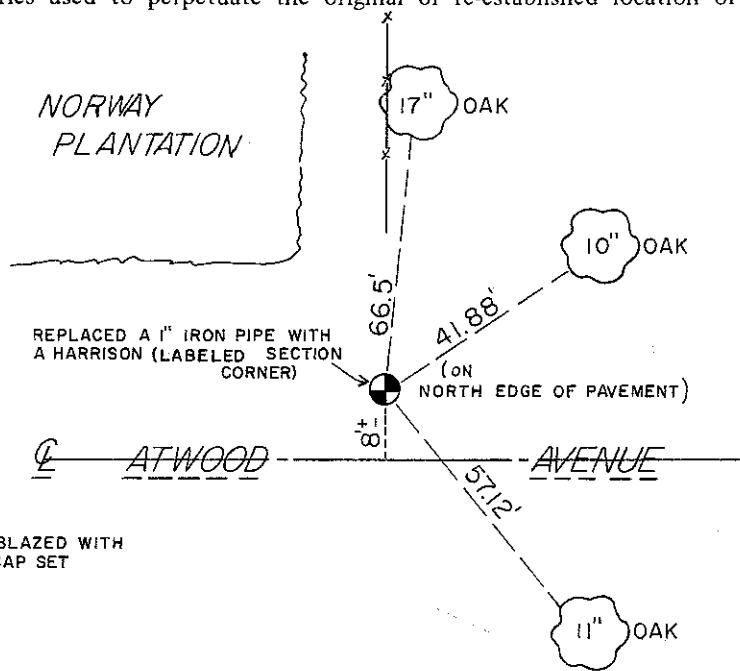
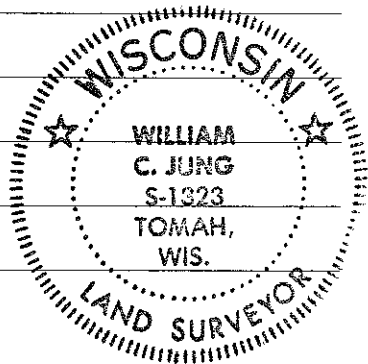
William C. Jung, R.L.S. 1323

Approved: **HARLEY A. SIME**  
**MONROE CO. SURVEYOR**

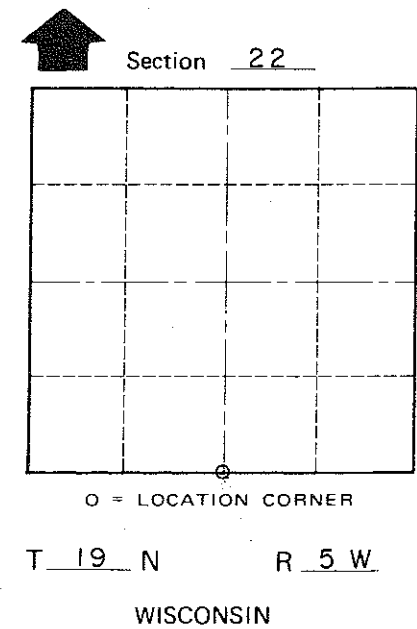
Description of corner and witness monuments, references and accessories used to perpetuate the original or re-established location of this corner:

Witnesses to corner location:

Jung  
Pietz  
Tormoen



NOTE: TREES BLAZED WITH NAIL & CAP SET



COUNTY SURVEYOR FORM NO. 1

SURVEY CONTROL ORDER

Horizontal \_\_\_\_\_  
Vertical \_\_\_\_\_

WISCONSIN COORDINATE SYSTEM

Corner	East (X)	North (Y)	Elevation (Z)	Zone
Control Sta. Name				

\_\_\_\_\_ or Town Little Falls  
County of Monroe