

# U.S. PUBLIC LAND SURVEY MONUMENT RECORD

I, Eric A. Roeser, do hereby certify that on the 28th day of November of 2012, I re-established the Northwest Corner of Section 26, Township 19 North, Range 5 West, Fourth Principal Meridian, as described hereon; and set a new monument and accessories as described hereon to perpetuate the location of this corner; and that this U.S. Public Land Survey Monument Record is correct to the best of my knowledge and belief.

**Description of original monument and accessories subsequent to restorations:**

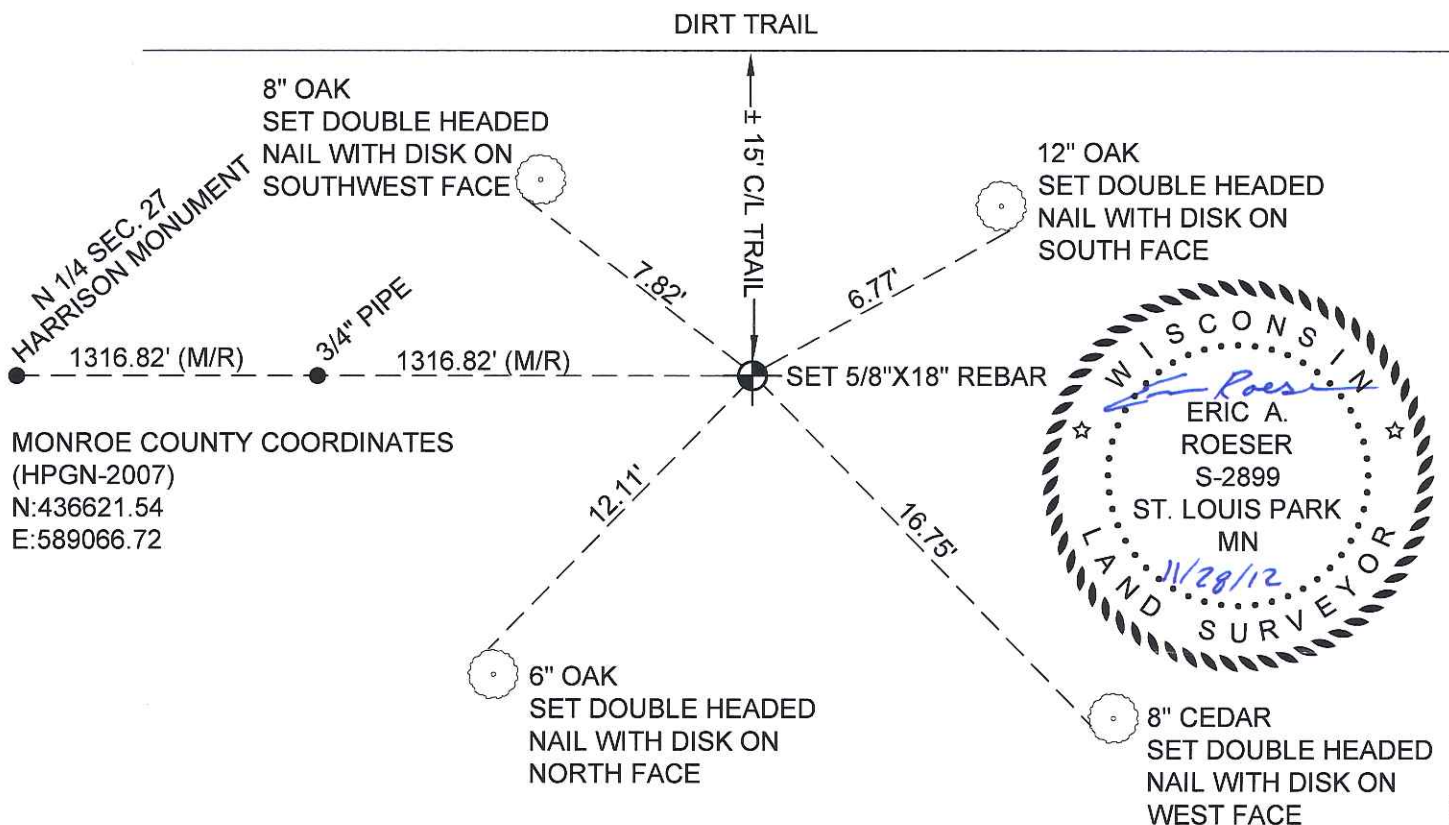
1847: Original Corner (post) established by J.D. Turner with the following accessories:  
 8-inch Jack Oak at S78°E, 52 lks.      5-inch Jack Oak at S29°E, 24 lks.

1988: See corner record 85 Norman Ray Hurlburt (S-1104) re-established the corner from double proportion from corners one mile North east, and South, and one half mile west. No monument was set at the request of the land owners. The following monuments were referenced in Hurlburt's certificate:

S 1/4 of Section 22, S88°16'51"W, 2633.64 feet      3/4" x 30" Pipe S88°16'51"W, 1316.82 feet  
 1" x 36" Pipe, S88°16'51"W, 1283.82 feet

**Evidence found and justification for locating corner as shown:**

I recovered several accessories from Hurlburt's corner record (85) to establish this position and set a 5/8 x 24 inch rebar to monument this position. I referenced the corner as shown below.



<b>T19N R5W</b>			
<b>Section</b>	<b>26</b>		

Dated at St. Paul, Minnesota, this 28th day of November, 2012

Signature \_\_\_\_\_

WI Registration No. 2899-8

Office of County Surveyor in Monroe County  
 I hereby certify that the within instrument was filed in this office for  
 record on the \_\_\_\_ day of \_\_\_\_\_, 2012

Signature \_\_\_\_\_  
 Title: Monroe County Surveyor

Index No. T19N R5W 85

No. 85 (Page 2)  
 CORNER NO. 21905220000

CERTIFICATE

CERTIFIED LAND CORNER

No. 85

**21905220000**

I, Norman R. Hurlburt, do hereby certify that on the 4<sup>th</sup> day of May 1988, I found ~~(evidence)~~ (no evidence) of the SE corner of Sec. 22, T 19 N, R 5W Fourth Principal Meridian, and I re-established said corner according to the Wisconsin Statutes as shown and described hereon.

Dated this 16 day of JUNE 1988.

Norman R. Hurlburt  
S-1104  
Title

History of corner establishment since Original Government Survey

Mr. Kenyon used this corner in 1886, but does not indicate any remonumentation.

Description of corner evidence found:

We found no evidence of the original corner. Land all around the corner is under one ownership, and there are no fences. We re-established the corner by double proportion from corners one mile north, east, and south, and one half mile west. This method would place the 1/16 corner west of here nearly perfectly on the centerline of the north-south road, though about 18 feet north of the center of the east-west road. It would place the 1/16 corner north of here within 2 feet of the east-west fence line. The distance a mile north and a half mile west from here are both within two feet of Mr. Kenyons distances.

Description of corner and witness monuments, references and accessories used to perpetuate the original or re-established location of this corner:

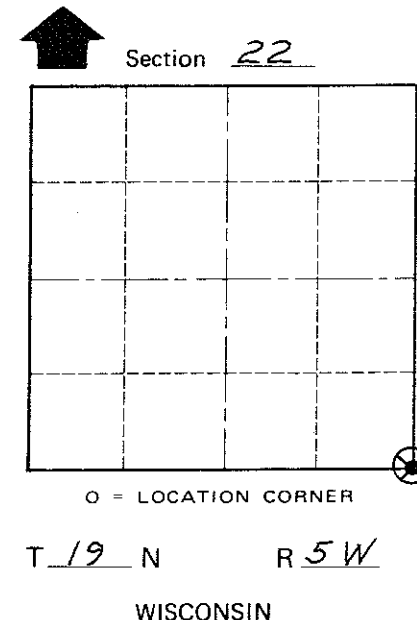
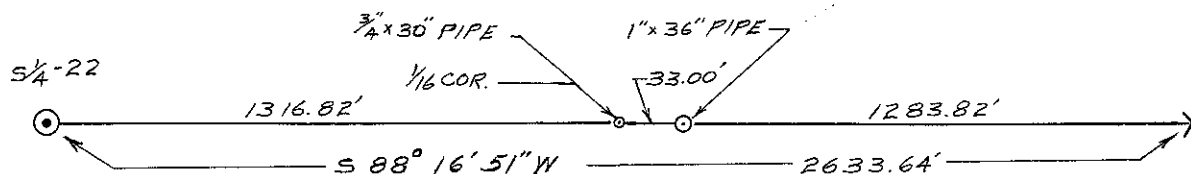
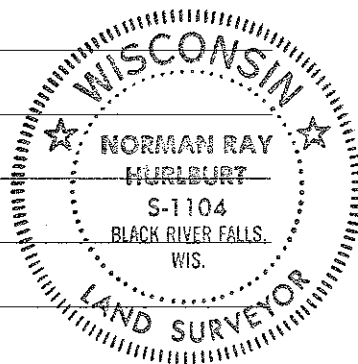
Corner monument was not set, at request of landowner.

Witnesses to corner location:

D.W. Melichar

R. Found

N. R. Hurlburt



COUNTY SURVEYOR FORM NO. 1

SURVEY CONTROL ORDER

Horizontal \_\_\_\_\_  
Vertical \_\_\_\_\_

WISCONSIN COORDINATE SYSTEM

Corner	East (X)	North (Y)	Elevation (Z)	Zone
Control Sta. Name				

City, Village or Town LITTLE FALLS  
County of MONROE