

21905152000

I, Lawrence A. Feddersen, do hereby certify that on the Seventeenth day of July 19 95, I found ~~no evidence~~ (no evidence) of the West Quarter corner of Section Fourteen, T 19 N, R 5 W Fourth Principal Meridian, and I re-established said corner according to the Wisconsin Statutes as shown and described hereon.

Dated this 24 day of July 1995.

Lawrence A. Feddersen

Registered Land Surveyor

History of corner establishment since Original Government Survey

No record of re-established corner.

Description of corner evidence found:

Set corner halfway on a straight line between the Northwest corner and the Southwest corner of Section 14.

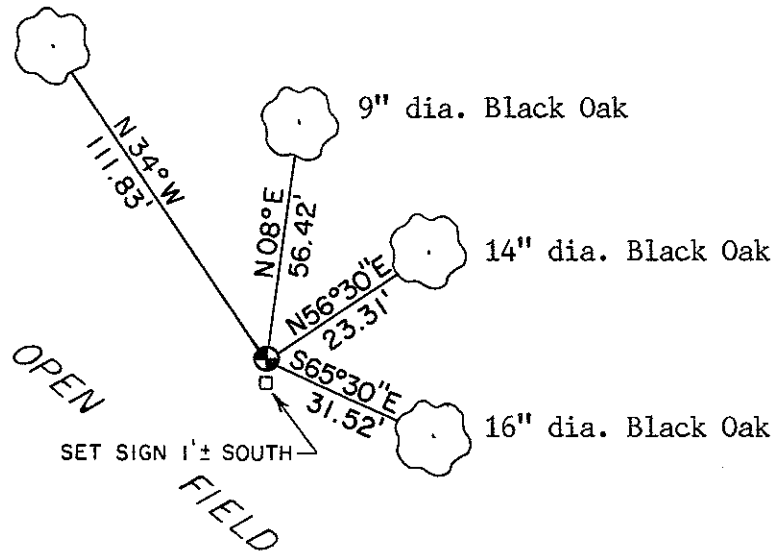
Description of corner and witness monuments, references and accessories used to perpetuate the original or re-established location of this corner:

14" dia. Black Oak

9" dia. Black Oak

14" dia. Black Oak

16" dia. Black Oak

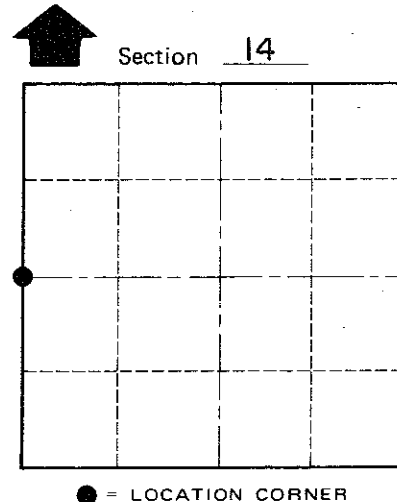
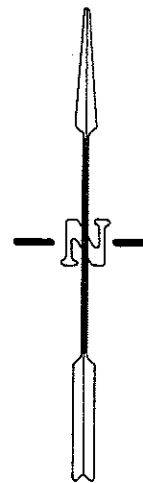


Witnesses to corner location:

Lawrence A. Feddersen

Douglas J. Malliet

Timothy J. Jeatran



● = LOCATION CORNER

T 19 N R 5 W

WISCONSIN

Note: All trees are double blazed with PK nail & washer in hack on side of tree, distances are to the PK nail. Set True Cast Products monument at corner up 0.1'.

SURVEY CONTROL ORDER

Table with 2 rows: Horizontal, Vertical.

WISCONSIN COORDINATE SYSTEM

Table with 5 columns: Corner, East (X), North (Y), Elevation (Z), Zone.

XXXXXXXXXX Town of Little Falls

County of Monroe

COUNTY SURVEYOR FORM NO. 1