

CERTIFICATE

CERTIFIED LAND CORNER

No. 66

21905150020

I, Norman R. Hurlburt, do hereby certify that on the 4th day of May 1988, I found ~~(evidence)~~ (no evidence) of the N¹/₄ corner of Sec. 22, T 19 N, R 5W Fourth Principal Meridian, and I re-established said corner according to the Wisconsin Statutes as shown and described hereon.

Dated this ~~June 16~~ day of JUNE 1988.

Norman R. Hurlburt

S-110A

Title

History of corner establishment since Original Government Survey

Mr. Kenyon used this corner in 1886, but does not indicate any new monumentation.

Description of corner evidence found:

We found no evidence of the original or perpetuated corner. We re-established it midway on a straight line between section corners, and set a Harrison Monument.

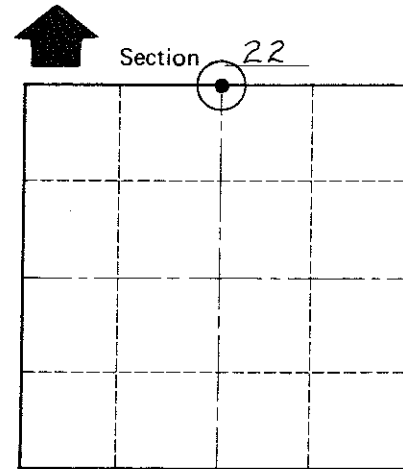
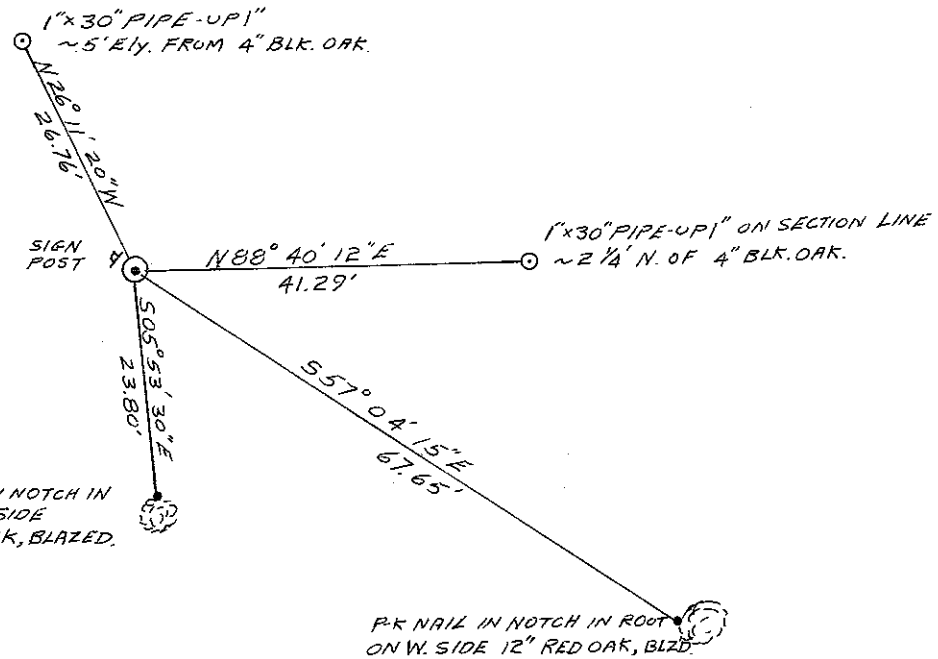
Description of corner and witness monuments, references and accessories used to perpetuate the original or re-established location of this corner:

Witnesses to corner location:

D.W. Melichar

R. Found

N.R. Hurlburt



O = LOCATION CORNER

T 19 N R 5W

WISCONSIN

COUNTY SURVEYOR FORM NO. 1

SURVEY CONTROL ORDER

Horizontal	_____
Vertical	_____

WISCONSIN COORDINATE SYSTEM

Corner	East (X)	North (Y)	Elevation (Z)	Zone
Control Sta. Name				

City, Village or Town LITTLE FALLS

County of MONROE