

CERTIFICATE

CERTIFIED LAND CORNER

No. 65

21905150000

I, Norman R. Hurlburt, do hereby certify that on the 4th day of May 19 88, I found ~~(evidence)~~ (no evidence) of the NE corner of Sec. 22, T 19 N, R 5W Fourth Principal Meridian, and I re-established said corner according to the Wisconsin Statutes as shown and described hereon.

Dated this 16 day of JUNE 1988.

Norman R. Hurlburt
5-1104
 Title

History of corner establishment since Original Government Survey

Mr. Kenyon used this corner in 1886, but does not indicate any new monumentation.

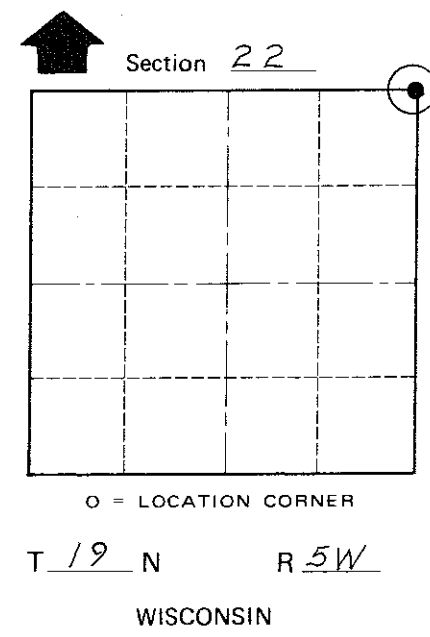
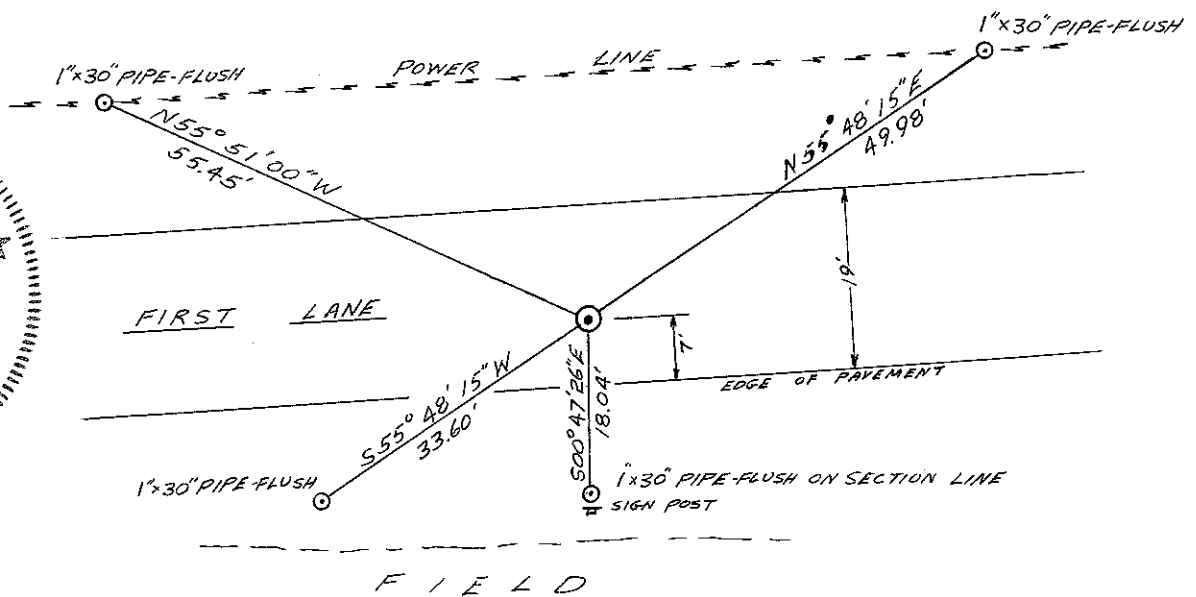
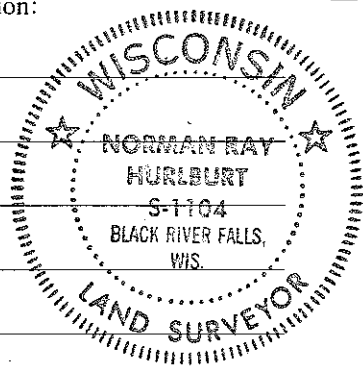
Description of corner evidence found:

We found no evidence of the original corner. We re-established it at proportional distance between section corners one mile east and west and on line with the fence corner a quarter mile east and the section corner a mile east. We found no evidence of the quarter corner north of here, and a mile north found only a well-established but somewhat crooked east-west fence, which is approximately 5280 feet from our corner. See comments on SE Corner Sec. 22 for more information.

Description of corner and witness monuments, references and accessories used to perpetuate the original or re-established location of this corner:

Witnesses to corner location:

D.W. Melichar
R. Found
N.R. Hurlburt



COUNTY SURVEYOR FORM NO. 1

SURVEY CONTROL ORDER

Horizontal	_____
Vertical	_____

WISCONSIN COORDINATE SYSTEM

Corner	East (X)	North (Y)	Elevation (Z)	Zone
Control Sta. Name				

City, Village or Town LITTLE FALLS

County of MONROE