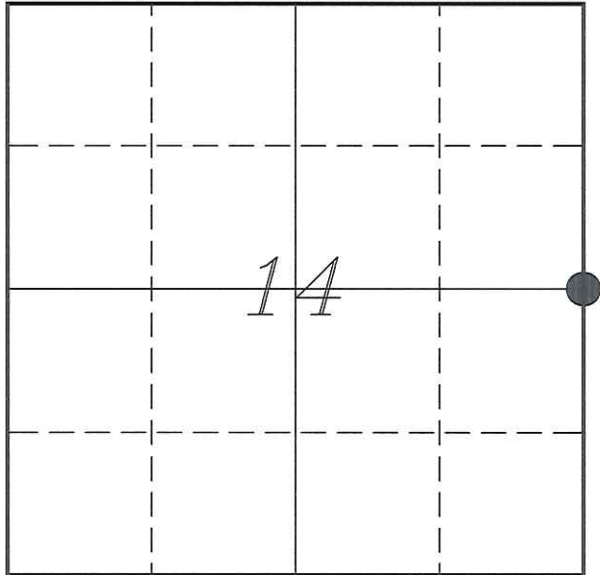


U. S. PUBLIC LAND SURVEY MONUMENT RECORD

SECTION 14, T19N, R5W, TOWN OF LITTLE FALLS
 MONROE COUNTY, WISCONSIN



MONROE COUNTY COORDINATE SYSTEM	
Northing	444588.540
Easting	594341.471
Datum	NAD 1983 (1991)
Elevation	
Datum	
TYPE OF LANDMARK:	
Existing Harrison Monument	
BEARINGS ARE REFERENCED TO:	
Monroe County Coordinates	

LOCATION OF LANDMARK

Witnesses: Laurence E Johns III
 Larry Handschy

Date: 10 November 2013

Describe any record evidence, monument evidence, testimonial evidence or any other material evidence you considered and whether the monument was found or restored through acceptance of an obliterated evidence location.

No bearing trees of record were located.

I found a Harrison Monument at about 1' South of a fence corner, on the East side of the road. This monument has been used by many surveyors in the past.

I set 4 new ties as shown on the sketch.

Describe or show any material discrepancy between the location of the restored corner and that of the corner previously restored or re-established.

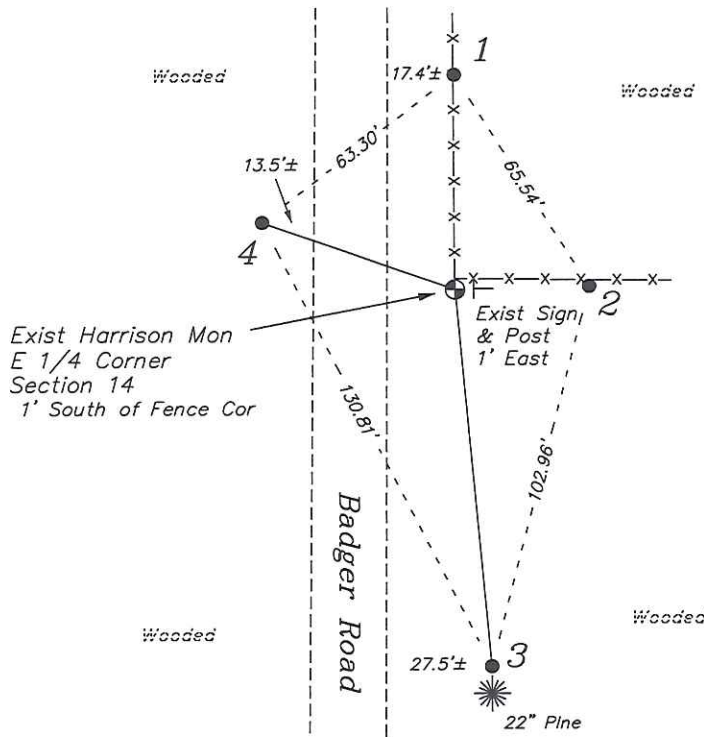
Henry Maddin established this corner in February 1847.

William Jung was here, in February 1978, during a survey in Section 13 . He shows that he set a Harrison Monument and prepared a tie sheet.

There are many surveys on file that use this corner since that time. Including ones by myself.

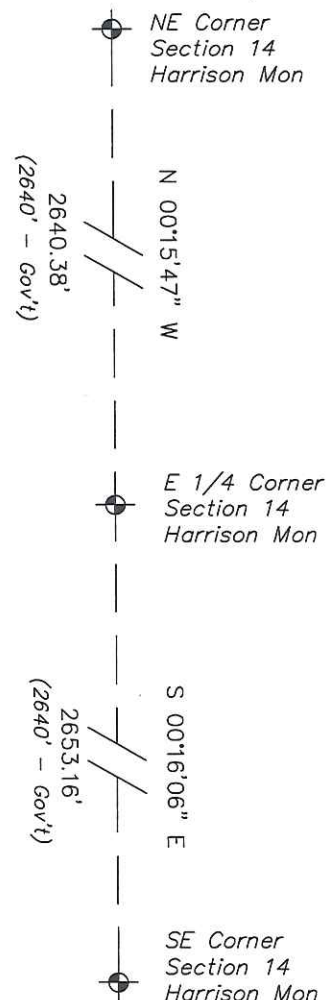
RECORD OF DURABLE WITNESS MONUMENTS

NO	DESCRIPTION	BEARING	DISTANCE
1	Set 3/4" x 18" Iron Rod In Fence Line	N 00°00'21" W	56.27'
2	Set 3/4" x 18" Iron Rod In Fence Line	N 88°37'20" E	34.97'
3	Set 3/4" x 18" Iron Rod 1' North of a 22" Pine	S 05°19'51" E	99.28'
4	Set 3/4" x 18" Iron Rod 1' South of a RR Tie Gate Post	N 70°35'02" W	53.21'



PLAN VIEW DRAWING OF REFERENCE TIES

Map Showing Distance And Direction To Other Public Land Survey
Corners Used For Re-Establishing The Corner NOT TO SCALE



I, Laurence E Johns III RLS 2804, Registered Land Surveyor, hereby certify that the corner location shown on this record was determined by me or under my direction and control, and that this U.S. Public Land Survey Monument Record is correct and complete to the best of my knowledge and belief.

Laurence E Johns III RLS 2804
 Eagle Ridge Surveying, LLC
 PO Box 213
 Wilton, Wisconsin
 10 November 2013

21905142000

I, Harley A. Sime, do hereby certify that on the 8 day of April 1976, I found (evidence) (~~not a witness~~) of the W 1/4 corner of Section 13, T 19 N, R 5 W Fourth Principal Meridian, and I re-established said corner according to the Wisconsin Statutes as shown and described hereon.

History of original corner establishment:

Description of corner evidence found:

Set on line proportionately between SW & NW corners (So as to fit previous surveys) This way it fit the existing fence & previously set reference pipe.

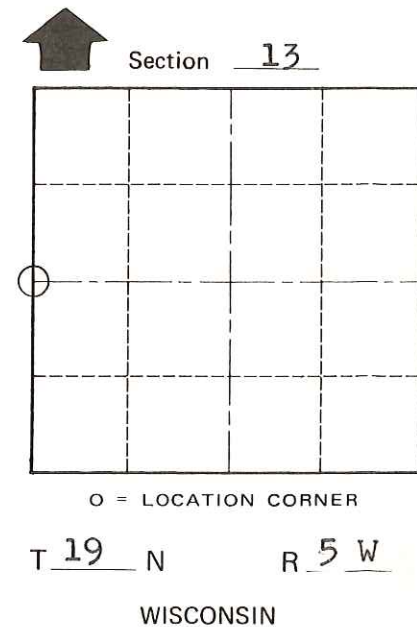
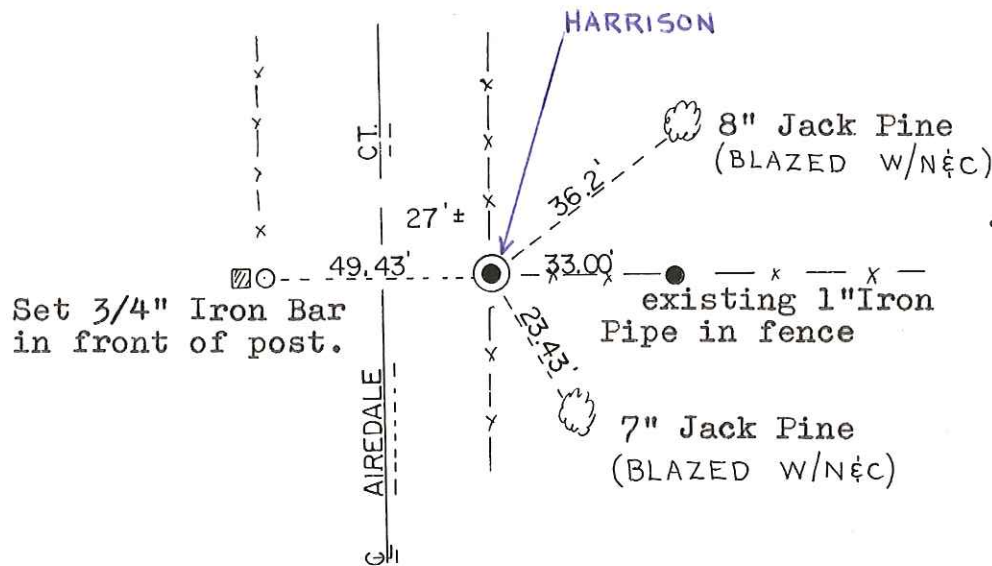
Dated this 7TH day of Feb. 1978.

County Surveyor Approved: HARLEY A. SIME
Title MONROE CO. SURVEYOR

Description of corner and witness monuments, references and accessories used to perpetuate the original or re-established location of this corner:

Witnesses to corner location:

Douglas Malliet, Crew Chief
W.C. Jung W.C. Jung
A. Lueck



COUNTY SURVEYOR FORM NO. 1

SURVEY CONTROL ORDER

Horizontal	_____
Vertical	_____

WISCONSIN COORDINATE SYSTEM

Corner	East (X)	North (Y)	Elevation (Z)	Zone
Control Sta. Name				

~~City/Town~~ or Town Little Falls
County of Monroe