

CERTIFICATE

CERTIFIED LAND CORNER

No. 122

21905360020

I, Norman R. Hurlburt, do hereby certify that on the 29th day of April 1983, I found ~~(evidence)~~ (no evidence) of the S¹/₄ corner of Sec. 36, T 19 N, R 5W E, Fourth Principal Meridian, and I re-established said corner according to the Wisconsin Statutes as shown and described hereon.

Dated this 4th day of May 1983.

Norman R. Hurlburt

Norman R. Hurlburt S-1104
Title

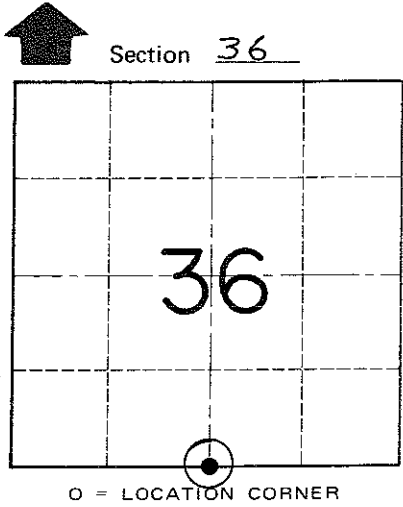
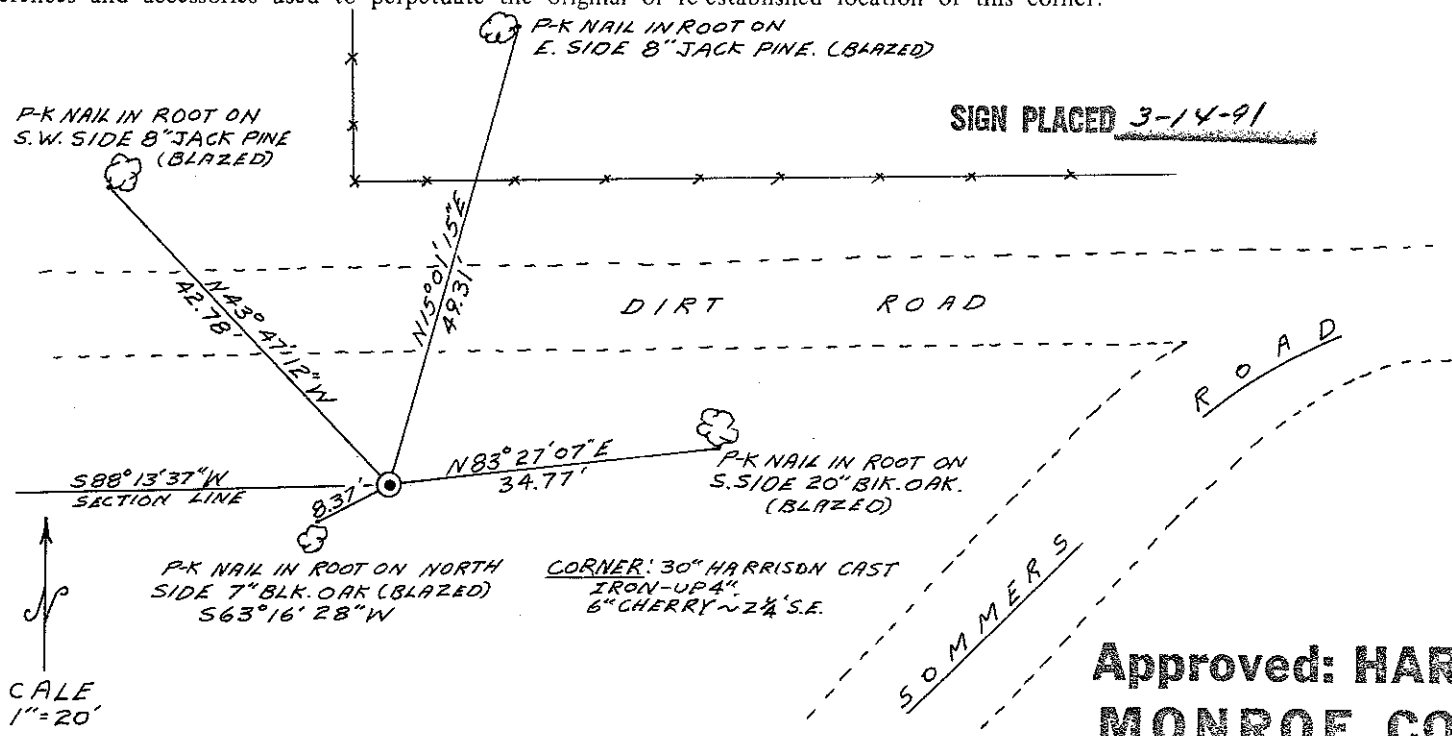
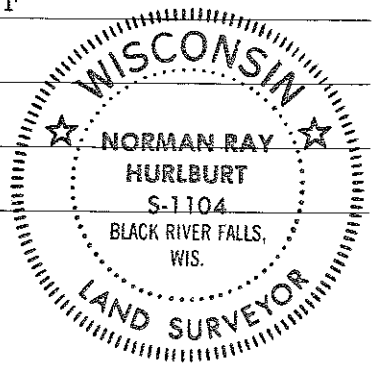
History of original corner establishment:
None on record since the original survey

Description of corner evidence found:
This corner was set by proportionate distance between the SW corner of Sec. 35 and the SE of 36.

COUNTY SURVEYOR FORM NO. 1

Description of corner and witness monuments, references and accessories used to perpetuate the original or re-established location of this corner:

Witnesses to corner location:
N. Hurlburt
D. Melichar



T. 19 N R. 5 W
WISCONSIN

Approved: **HARLEY A. SIME**
MONROE CO. SURVEYOR

SURVEY CONTROL ORDER

Horizontal	_____
Vertical	_____

WISCONSIN COORDINATE SYSTEM

Corner	East (X)	North (Y)	Elevation (Z)	Zone
Control Sta. Name				

City, Village or Town Little Falls
County of Monroe