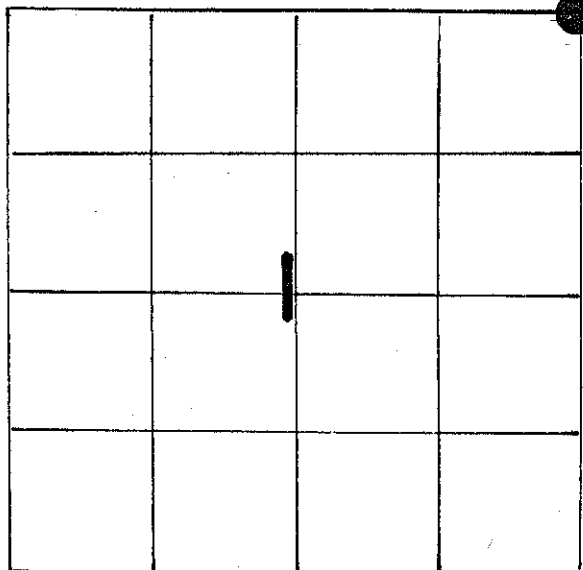


21905360000

U. S. PUBLIC LAND SURVEY MONUMENT RECORD

SECTION 1 T 18 N, R 5 W, TOWN OF BURNS

LA CROSSE COUNTY



LOCATION OF LANDMARK

WISCONSIN COORDINATE SYSTEM
North
East
Theta Angle
Horiz. Order
Vert. Order
TYPE OF LANDMARK
1 1/4" IRON BAR
BEARINGS ARE REFERENCED TO
Assumed

Crew: William Jung
Perry Dahl
6/20/85

Describe any record evidence, monument evidence, testimonial evidence or any other material evidence you considered and whether the monument was found or restored through acceptance of an obliterated evidence location.

Fred Holden, the old County Surveyor, was at this corner in April of 1908 and found the original bearing trees. "Duke" Marten set a 1 1/4" round iron bar at the road intersection after traversing out Sec. 6 of 18N-4W. Norm Hurlburt used this corner in 1983. I found the 1 1/4" iron bar and made new ties.

*Marten set the bar on August 15, 1974.

*Holden was the old Monroe County Surveyor.

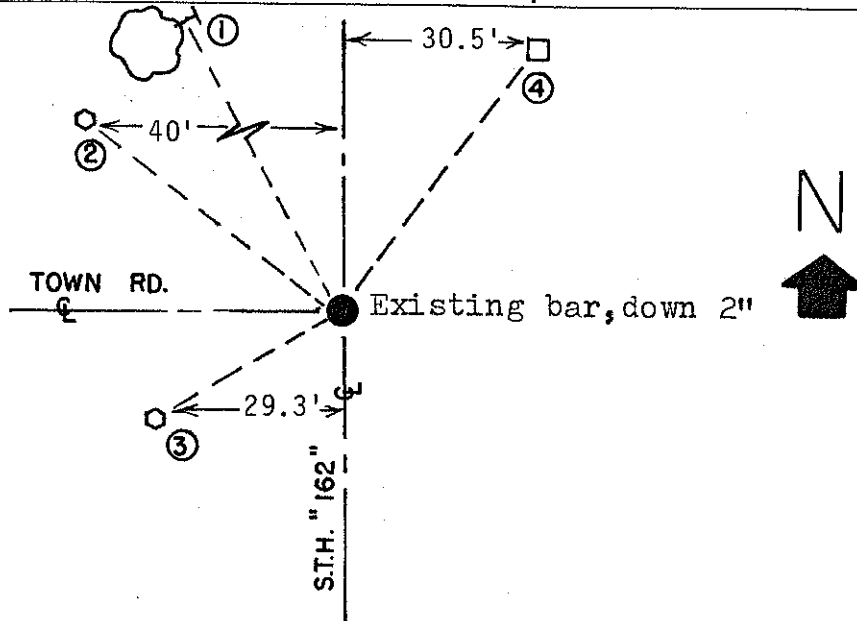
Describe or show any material discrepancy between the location of the restored corner and that of the corner previously restored or reestablished.

None known.

21905360000

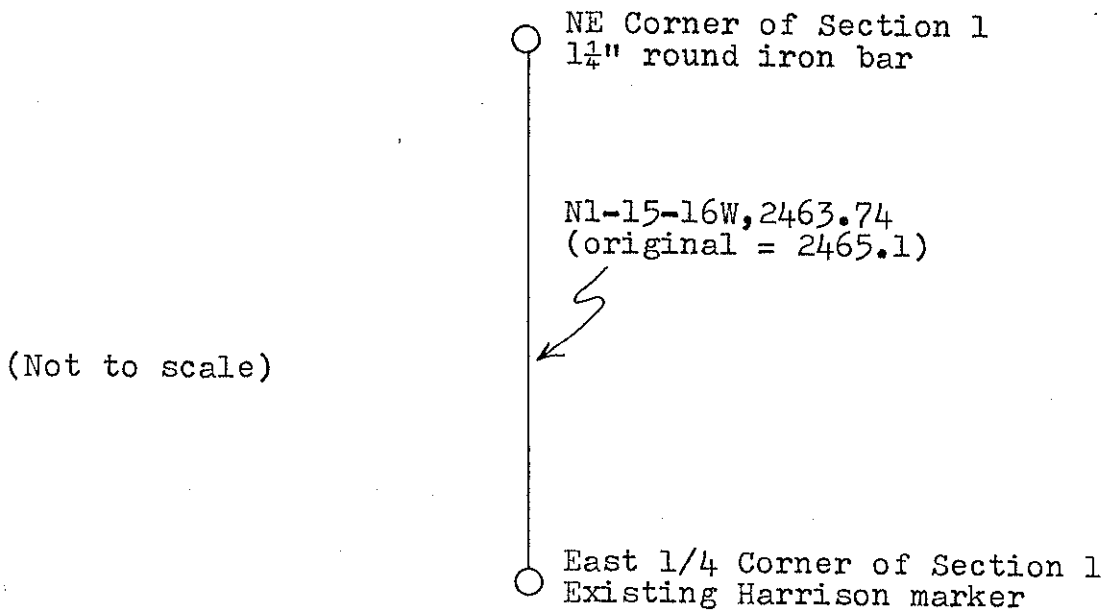
RECORD OF DURABLE WITNESS MONUMENTS

NO	DESCRIPTION	BEARING	DISTANCE
1	P.K. NAIL IN 8" DOUBLE-BLAZED BURR OAK	N35°W ±	84.44'
2	CENTER OF ROAD SIGN	-----	49.5'
3	CENTER OF WOOD POST	-----	34.4'
4	CENTER OF TELEPHONE BOX	-----	51.47'



PLAN VIEW DRAWING OF REFERENCE TIES

MAP SHOWING DISTANCE AND DIRECTION TO OTHER PUBLIC LAND SURVEY CORNERS USED FOR REESTABLISHING THE CORNER



I, William C. Jung, Deputy County Surveyor,
 HEREBY CERTIFY THAT THE CORNER LOCATION SHOWN ON THIS RECORD
 WAS DETERMINED BY ME OR UNDER MY DIRECTION AND CONTROL AND
 THAT THIS U. S. PUBLIC LAND SURVEY MONUMENT RECORD IS CORRECT
 AND COMPLETE TO THE BEST OF MY KNOWLEDGE AND BELIEF.

William C. Jung 8/30/85
 Signature Date



CERTIFICATE

CERTIFIED LAND CORNER

No. 13

21905360000

I, Harley A. Sime, do hereby certify that on the 15th day of August 1974, I found (evidence) (~~no evidence~~) of the NW corner of Section 6, T 18 N, R 4 W, Fourth Principal Meridian, and I re-established said corner according to the Wisconsin Statutes as shown and described hereon.

History of original corner establishment:

Fred Holden was at this corner in April of 1908 and found the original.

Description of corner evidence found:

Set a 1 1/4" iron bar flush with top of road.
Traversed Section 6 and set the corner at the road intersection.

Dated this 7th day of Feb. 1978.

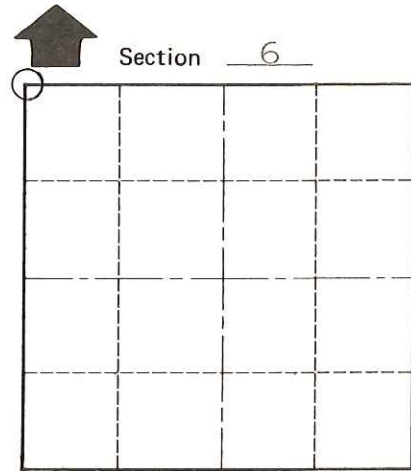
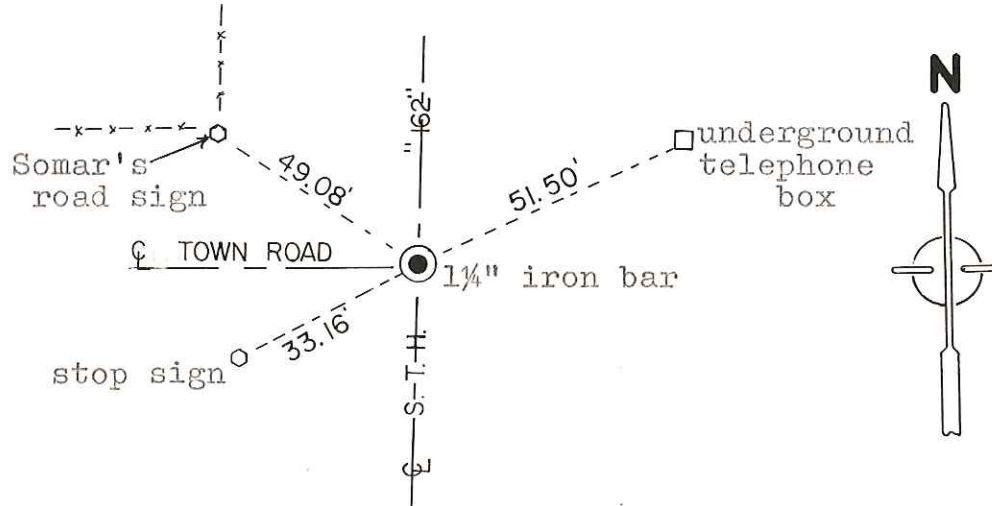
County Surveyor
Title

Approved: HARLEY A. SIME
MONROE CO. SURVEYOR

Description of corner and witness monuments, references and accessories used to perpetuate the original or re-established location of this corner:

Witnesses to corner location:

D. Marten



O = LOCATION CORNER

T 18 N R 4 W

WISCONSIN

COUNTY SURVEYOR FORM NO. 1

SURVEY CONTROL ORDER

Horizontal	_____
Vertical	_____

WISCONSIN COORDINATE SYSTEM

Corner	East (X)	North (Y)	Elevation (Z)	Zone
Control Sta. Name				

City, Village or Town Little Falls

County of Monroe

O.K.