

21905352000

I, Norman R. Hurlburt, do hereby certify that on the 29th day of April 19 83, I found (evidence) (no evidence) of the E 1/4 corner of Sec. 35, T. 19 N, R. 5 W Fourth Principal Meridian, and I re-established said corner according to the Wisconsin Statutes as shown and described hereon.

Dated this 4th day of May 19 83.

Norman R. Hurlburt 5-1104 Title

History of corner establishment since Original Government Survey

None on record

Description of corner evidence found:

This corner was set at the fence corner. This position fits well between corners north and south.

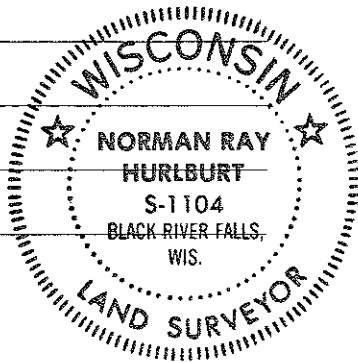
COUNTY SURVEYOR FORM NO. 1

Description of corner and witness monuments, references and accessories used to perpetuate the original or re-established location of this corner:

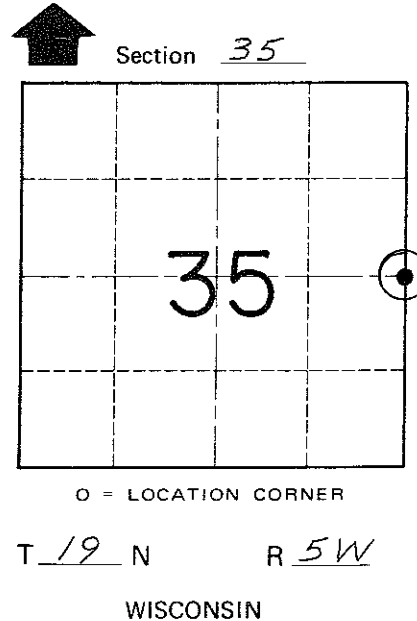
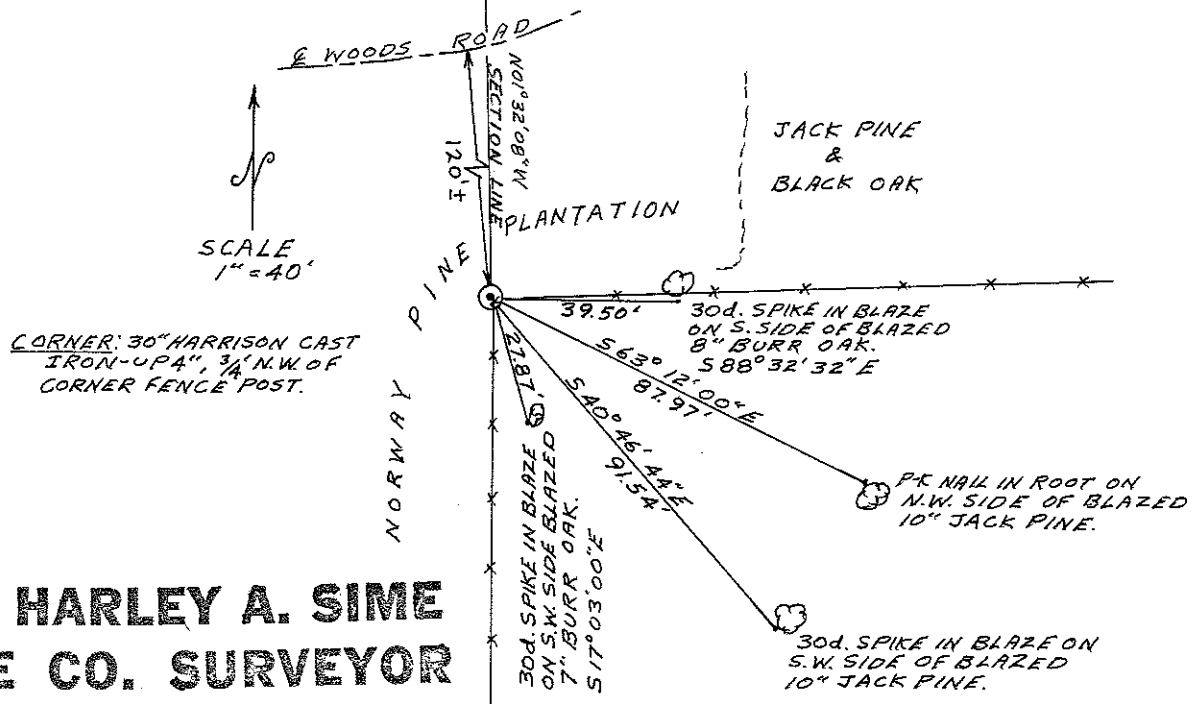
Witnesses to corner location:

N. Hurlburt

D. Melichar



Approved: HARLEY A. SIME MONROE CO. SURVEYOR



SURVEY CONTROL ORDER

Horizontal _____ Vertical _____

WISCONSIN COORDINATE SYSTEM

Table with columns: Corner, Control Sta. Name, East (X), North (Y), Elevation (Z), Zone

City, Village or Town Little Falls County of Monroe