

CERTIFICATE

CERTIFIED LAND CORNER

No. 124

21905350020

I, Norman R. Hurlburt, do hereby certify that on the 29th day of April 1983, I found ~~(evidence)~~ (no evidence) of the S/4 corner of Sec. 35, T 19 N, R 5W E, Fourth Principal Meridian, and I re-established said corner according to the Wisconsin Statutes as shown and described hereon.

Dated this 4th day of May 1983.

Norman R. Hurlburt
Title S-1104

History of original corner establishment:

None on record since original survey.

Description of corner evidence found:

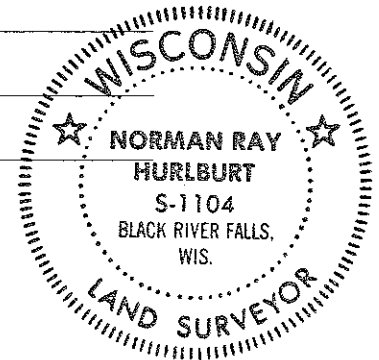
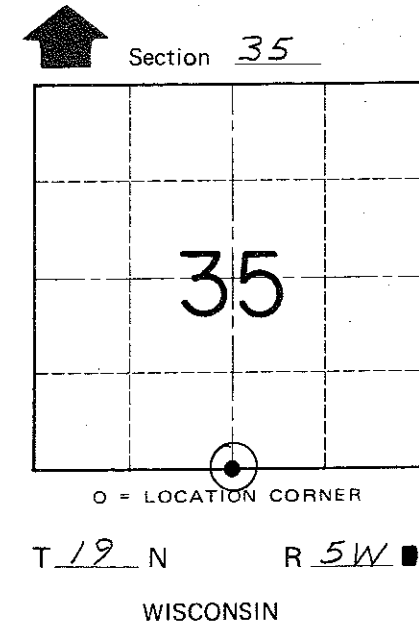
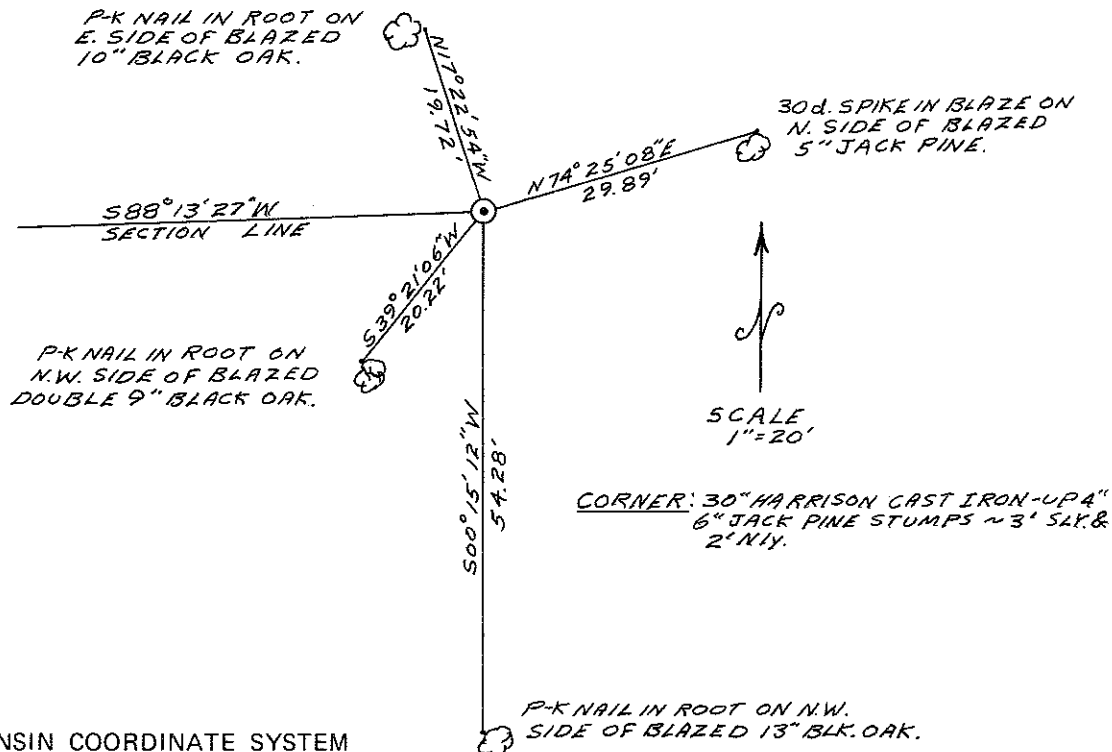
This corner was set by proportionate distance between the SW corner of Sec. 35 and the SE of 36. There is common ownership all around the corner, so no evidence of its position. The corner falls nearly perfectly on line with a fence which runs very straight from the 1/16 corner north of here all the way to the N1/4 corner.

Approved: **HARLEY A. SIME**
MONROE CO. SURVEYOR

Description of corner and witness monuments, references and accessories used to perpetuate the original or re-established location of this corner:

Witnesses to corner location:

N. Hurlburt
D. Melichar



COUNTY SURVEYOR FORM NO. 1

SURVEY CONTROL ORDER

Horizontal _____
Vertical _____

WISCONSIN COORDINATE SYSTEM

Corner	East (X)	North (Y)	Elevation (Z)	Zone
Control Sta. Name				

City, Village or Town Little Falls
County of Monroe