

21905350000

I, Norman R. Hurlburt, do hereby certify that on the 29th day of April 1983, I found (no evidence) of the SE corner of Sec. 35, T. 19 N., R. 5W. Fourth Principal Meridian, and I re-established said corner according to the Wisconsin Statutes as shown and described hereon.

History of corner establishment since Original Government Survey

None on Record

Approved: HARLEY A. SIME MONROE CO. SURVEYOR

Dated this 4th day of May 1983.

Norman R. Hurlburt

Norman R. Hurlburt S-1104 Title

Description of corner evidence found:

This corner was set at proportional distance between the SW corner of Sec. 35 and the SE of 36. This position is about 30 feet west of the fence, but the line north falls about 15 feet east of the 1/16 corner, thus indicating a significant bend in the fence and putting its reliability in question.

Description of corner and witness monuments, references and accessories used to perpetuate the original or re-established location of this corner:

Witnesses to corner location:

N. Hurlburt

D. Melichar

COUNTY SURVEYOR FORM NO. 1

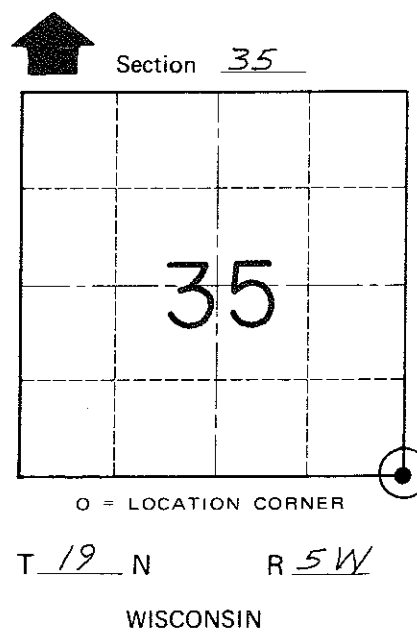
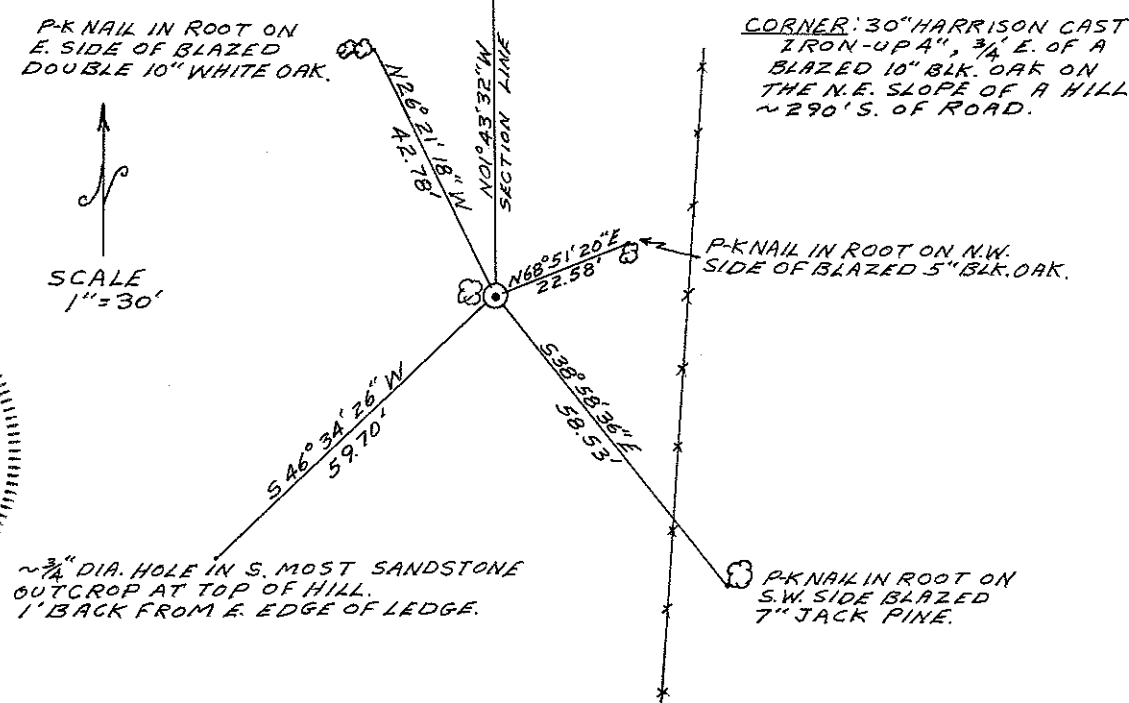
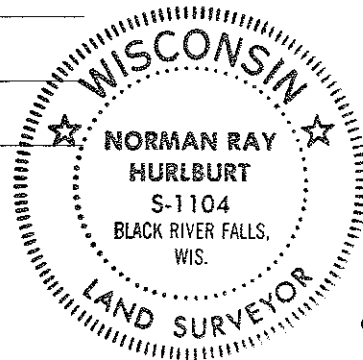


Table with 2 rows: Horizontal, Vertical under the heading SURVEY CONTROL ORDER.

Table with 5 columns: Corner, East (X), North (Y), Elevation (Z), Zone under the heading WISCONSIN COORDINATE SYSTEM.

City, Village or Town Little Falls County of Monroe