

CERTIFICATE

CERTIFIED LAND CORNER

No. 126

**21905340020**

I, Norman R. Hurlburt, do hereby certify that on the 25<sup>th</sup> day of January 1983, I found (evidence) (~~xxxxxxx~~) of the 5/4 corner of Sec. 34, T 19 N, R 5W, Fourth Principal Meridian, and I re-established said corner according to the Wisconsin Statutes as shown and described hereon.

Dated this 4<sup>th</sup> day of May 1983.

Norman R. Hurlburt  
Title S-1104

History of original corner establishment:

Clayton Solberg used this corner in La Crosse County CSM No. 78 of Vol. 2, and set a pipe.

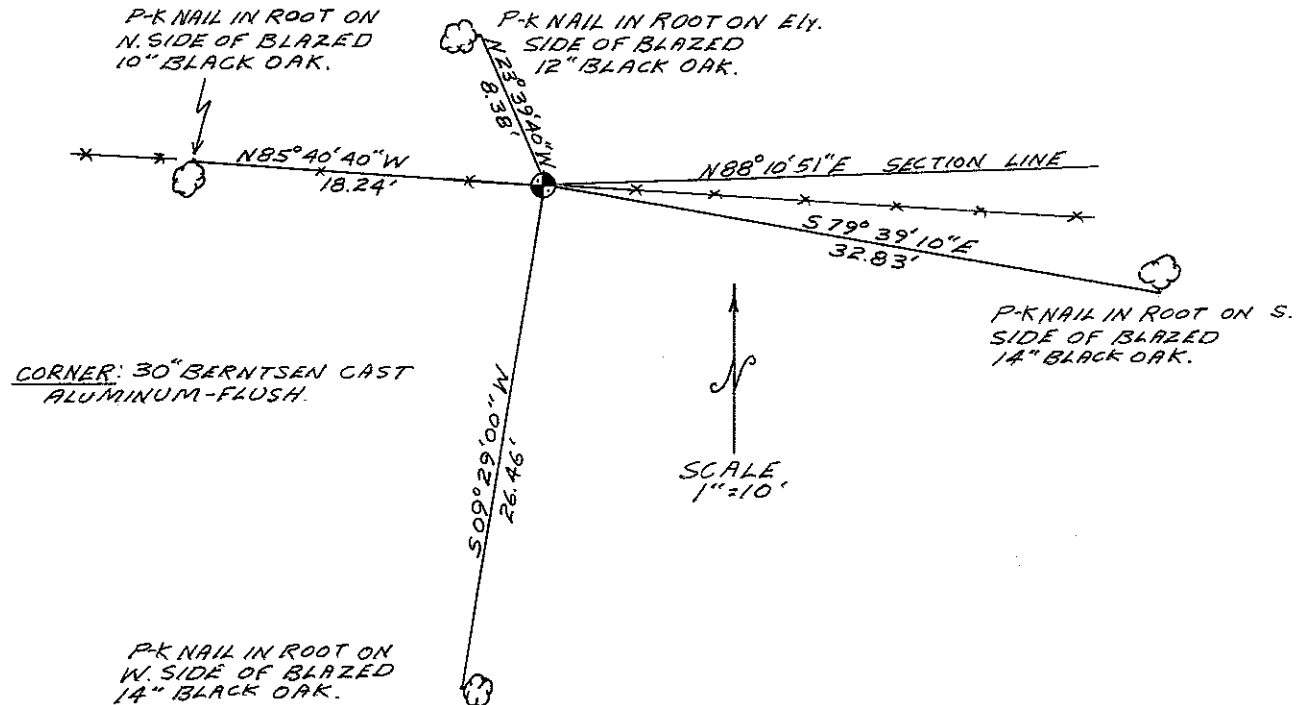
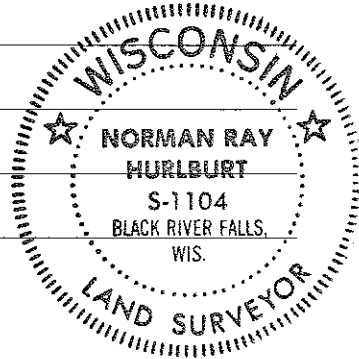
Description of corner evidence found:

I found Solberg's pipe (5/8") and replaced it with a La Crosse County Monument. This position fits line and proportional distance east and west quite well.

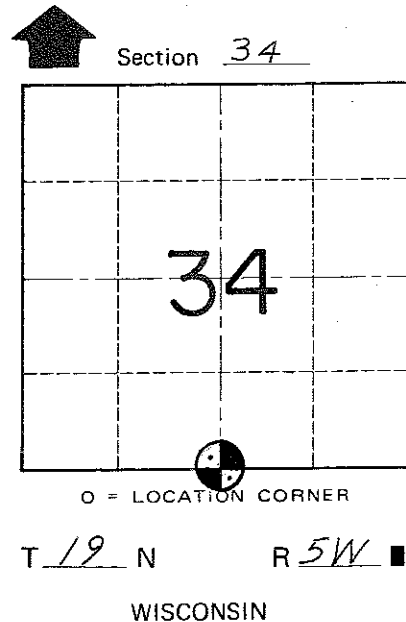
Description of corner and witness monuments, references and accessories used to perpetuate the original or re-established location of this corner:

Witnesses to corner location:

N. Hurlburt  
D. Melichar  
Ray Pelishek



WISCONSIN COORDINATE SYSTEM



T 19 N R 5W  
 WISCONSIN

COUNTY SURVEYOR FORM NO. 1

SURVEY CONTROL ORDER

Horizontal	_____
Vertical	_____

Corner	East (X)	North (Y)	Elevation (Z)	Zone
Control Sta. Name				

City, Village or Town Little Falls  
 County of Monroe