

CERTIFICATE

CERTIFIED LAND CORNER

No. 125

**21905340000**

I, Norman R. Hurlburt, do hereby certify that on the 29<sup>th</sup> day of April 19 83, I found ~~(evidence)~~ (no evidence) of the SW corner of Section 35, T 19 N, R 5W Fourth Principal Meridian, and I re-established said corner according to the Wisconsin Statutes as shown and described hereon.

History of corner establishment since Original Government Survey

None on record

Description of corner evidence found:

Existing pipes were found at the  $\frac{3}{4}$  corner of Section 34 and the  $\frac{1}{16}$  corner east of it. The line of those pipes was projected east to intersect the line of the fence running north from here. This position fits distances north, east, and west very well, considering the steep creek banks, and is reasonably on an east-west line. The fence running west is closer to the line most of the way than it is at this corner.

Dated this 4<sup>th</sup> day of May 19 83.

Norman R. Hurlburt

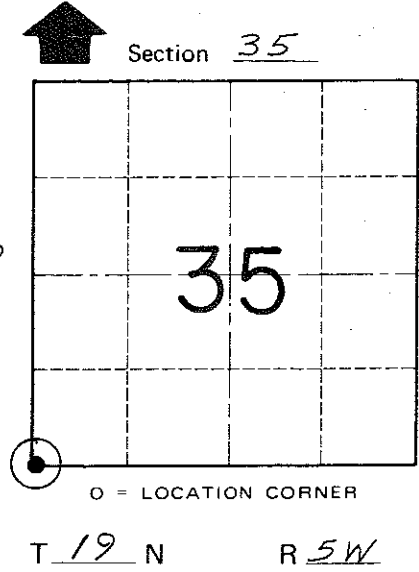
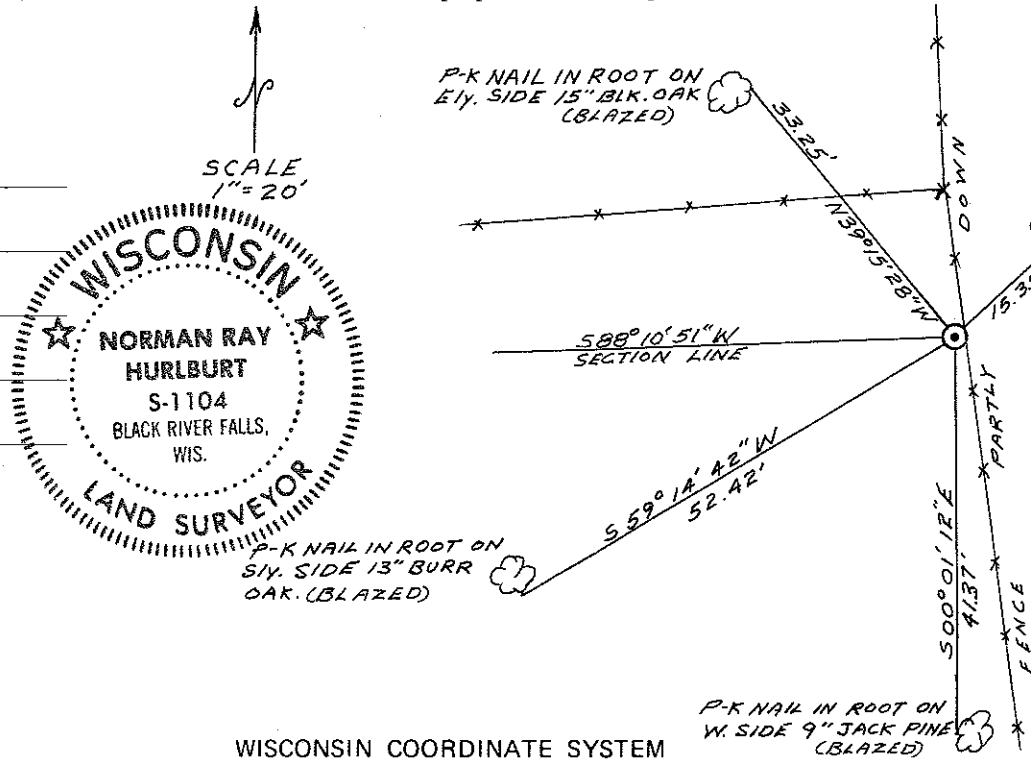
Norman R. Hurlburt S-1104  
Title

Description of corner and witness monuments, references and accessories used to perpetuate the original or re-established location of this corner:

Witnesses to corner location:

N. Hurlburt

D. Melichar



CORNER: 30" HARRISON CAST IRON-UP 4" ON THE EAST BANK OF THE VALLEY OF SAND CREEK. ~ 1/5 THE DISTANCE DOWN FROM THE TOP.

O = LOCATION CORNER

SURVEY CONTROL ORDER

Horizontal	_____
Vertical	_____

WISCONSIN COORDINATE SYSTEM

Corner	East (X)	North (Y)	Elevation (Z)	Zone
Control Sta. Name				

Approved: **HARLEY A. SIME**  
**MONROE CO. SURVEYOR**

City, Village or Town Little Falls

County of Monroe

COUNTY SURVEYOR FORM NO. 1