

# Government Land Corner Certificate

## Jackson County

CORNER VOL. 5, PAGE 723

CORNER # 2 19 05 33 2000

TYPE OF MONUMENT: 2" x 40" Brass Capped Pipe

~~XXXXXX~~ COORDINATES: N 18177.1369 WISCRS NAD83(91)

E 54686.0580 Ethan D. Remus

SECTION 33, T 19 N, R 5W

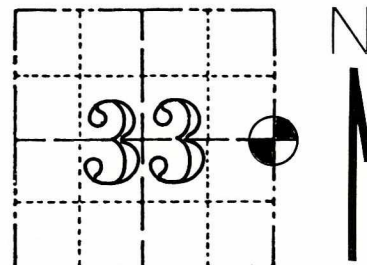
ELEVATION — M.S.L. DATUM: 1/5/2016

THETA ANGLE: \_\_\_\_\_

FIELD BOOK: HSE File 82N-018

DRAWN BY: D.W. MELICHAR page \_\_\_\_\_

REFERENCED FOR SURVEY RECORDED IN: \_\_\_\_\_



LOCATION  
(Shown by monument symbol)

### BASIS FOR MONUMENT LOCATION

Show info such as: History of corner, with reference to Vol. and pg., dates, surveyor; exact description of monument replaced; if location computed, by taped or EDM traverse; landowner remarks, etc. (Use reverse side if necessary)

I have found no record of this corner having been used since the original survey. I re-established the corner midway between section corners, which falls nearly on the fence line. The pipe 70 feet North shown as a reference is of unknown origin, probably set by a landowner. I drove a brass capped pipe at the corner and drove a steel witness post with sign 1.0 foot East.

SEAL:



DATA SHOWN HERE ON  
CERTIFIED CORRECT:

*Norman R. Hurlburt*

Registered Land Surveyor

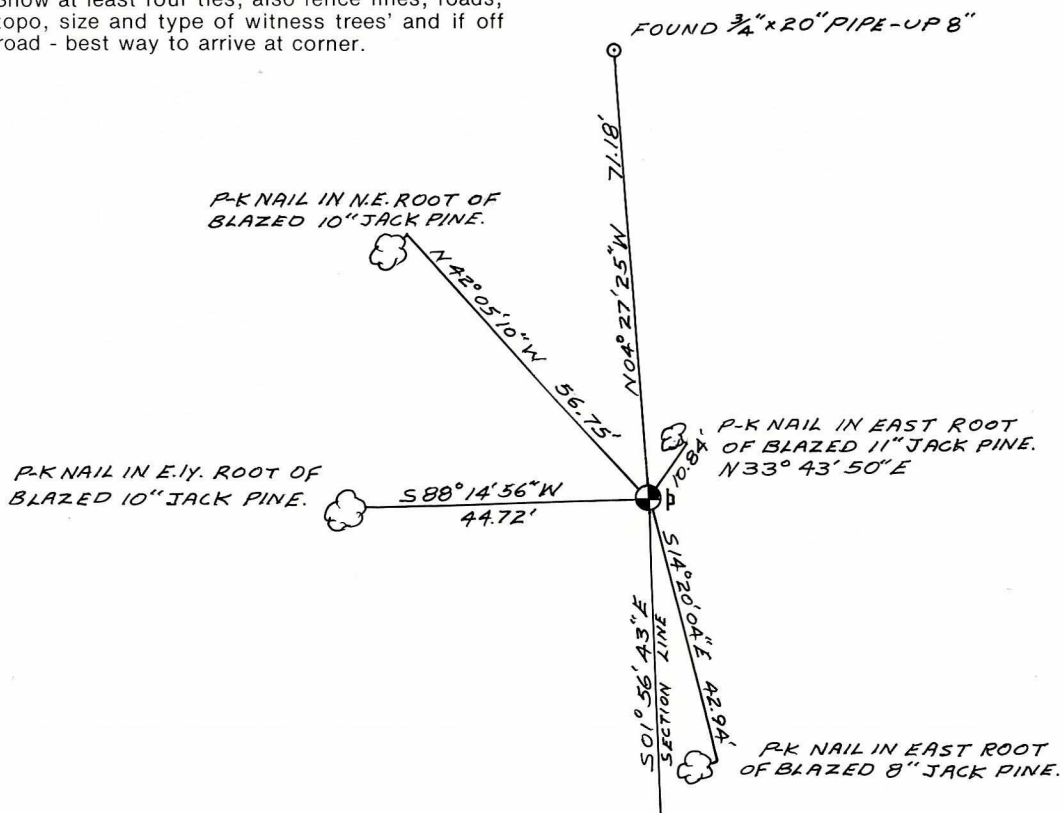
DATE: JUNE 24, 1983

### TIE SKETCH

1" = 30'



Show at least four ties, also fence lines, roads, topo, size and type of witness trees and if off road - best way to arrive at corner.



THIS AREA FOR COUNTY SURVEYOR INFORMATION

ACCT. INFO.: Invoice # 3890 , Date paid 6/28/83 , Check # 9655.

Maintenance report: (date, surveyor reporting, cond. of monument, condition of references, new references

\*\*\*\*\*

Note to surveyor filing this record: Please indicate maintenance priority: HIGH            , MED. X , LOW           

Continue notes from front here:

CERTIFICATE

CERTIFIED LAND CORNER

No. 117

21905332000

I, Norman R. Hurlburt, do hereby certify that on the 10<sup>th</sup> day of May 19 83, I found ~~(evidence)~~ (no evidence) of the W/4 corner of Sec. 34, T 19 N, R 5W ~~E~~ Fourth Principal Meridian, and I re-established said corner according to the Wisconsin Statutes as shown and described hereon.

History of ~~XXXX~~ corner establishment: since original government survey

None on Record

Description of corner evidence found:

I re-established the corner midway between section corners, which falls nearly on the fence line. The pipe 70 feet North shown as a reference in the sketch, is of unknown origin, probably set by a landowner. I drove a steel witness post with sign 1.0 foot East of the corner which I marked with a 2" x 40" brass capped pipe.

Dated this 21 day of June 19 83.

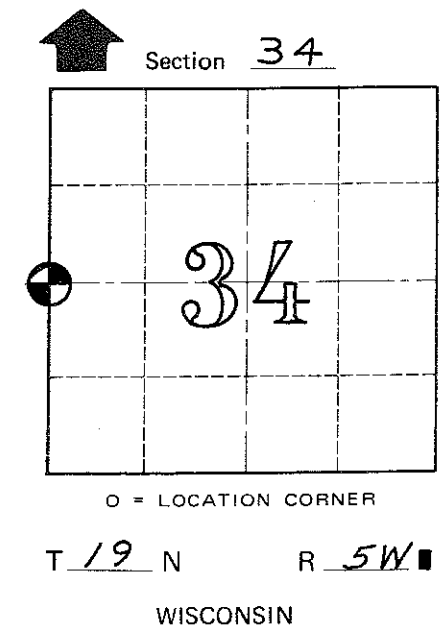
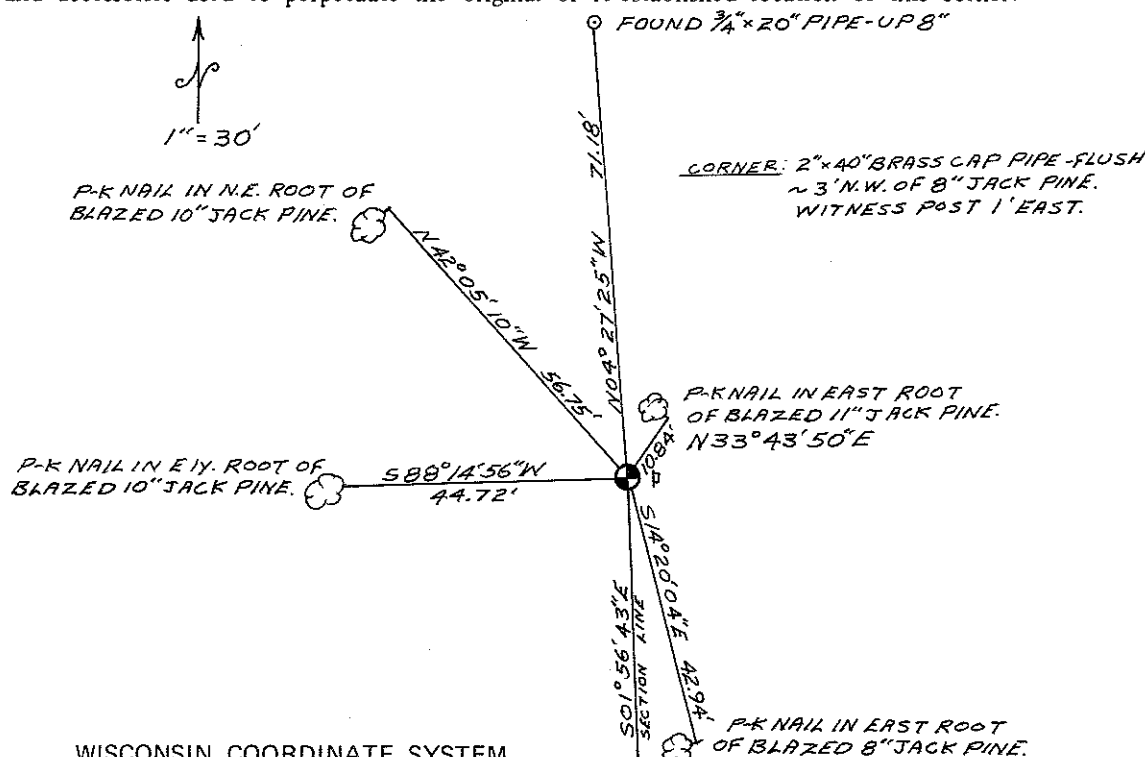
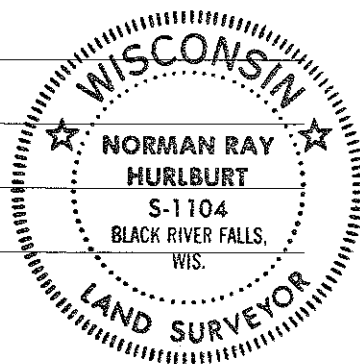
Norman R. Hurlburt  
 Norman R. Hurlburt      S-1104  
 Title

COUNTY SURVEYOR FORM NO. 1

Description of corner and witness monuments, references and accessories used to perpetuate the original or re-established location of this corner:

Witnesses to corner location:

N. Hurlburt  
D. Melichar



SURVEY CONTROL ORDER

Horizontal	_____
Vertical	_____

WISCONSIN COORDINATE SYSTEM

Corner	East (X)	North (Y)	Elevation (Z)	Zone
Control Sta. Name				

City, Village or Town Little Falls  
 County of Monroe