

Government Land Corner Certificate

CORNER VOL. 5, PAGE 655

Jackson County

BRASS CAPPED IRON PIPE

CORNER # 21905 33 0000

TYPE OF MONUMENT: 30" X 30" BRASS CAPPED IRON PIPE

SECTION 33, T 19, N. R. 5W

COORDINATES: N 15531.3900 WISCRS NAD83(91)
E 54725.6118 Ethan D. Remus

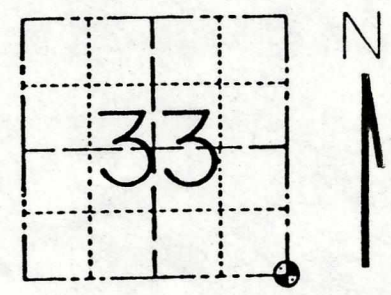
ELEVATION - M.S.L. DATUM: _____ 1/5/2016

THETA ANGLE: _____

FIELD BOOK: HSE File 82N-018

DRAWN BY: N.R. Hurlburt page _____

REFERENCED FOR SURVEY RECORDED IN: _____



LOCATION
(Shown by monument symbol)

BASIS FOR MONUMENT LOCATION

Show info such as: History of corner, with reference to Vol. and pg., dates, surveyor; exact description of monument replaced; if location computed, by taped or EDM traverse; landowner remarks, etc. (Use reverse side if necessary)

In La Crosse County CSM 78 of Vol. 2, Clayton Solberg ties his description to this corner, but does not indicate any monument here. I found a $\frac{3}{4}$ " pipe at the fence corner with a $\frac{1}{2}$ " pipe guard stake, which I assumed to be set by him, since it is similar to other stakes (unrecorded) set by him on the approximate section line south from here. Not knowing any other history of this corner, and needing other town line corners, I proceeded to verify its position. The nearest known corners are 2 miles west, 2 miles north, and 3 miles east. There is nothing south within a reasonable distance.

I traversed to all monumented or occupied corners from the SW 31 to the SE 36. The distance from the SE 31 to the SE 36 averages 5.4 feet per half mile short of government distance. Mr. Solberg's pipe is within 2 feet of correct proportion. A straight line between the same two points falls about 170 feet North of the pipe, but the general line of occupation, especially to the east, points toward the pipe, indicating a bend in the line here.

(continued on reverse side)

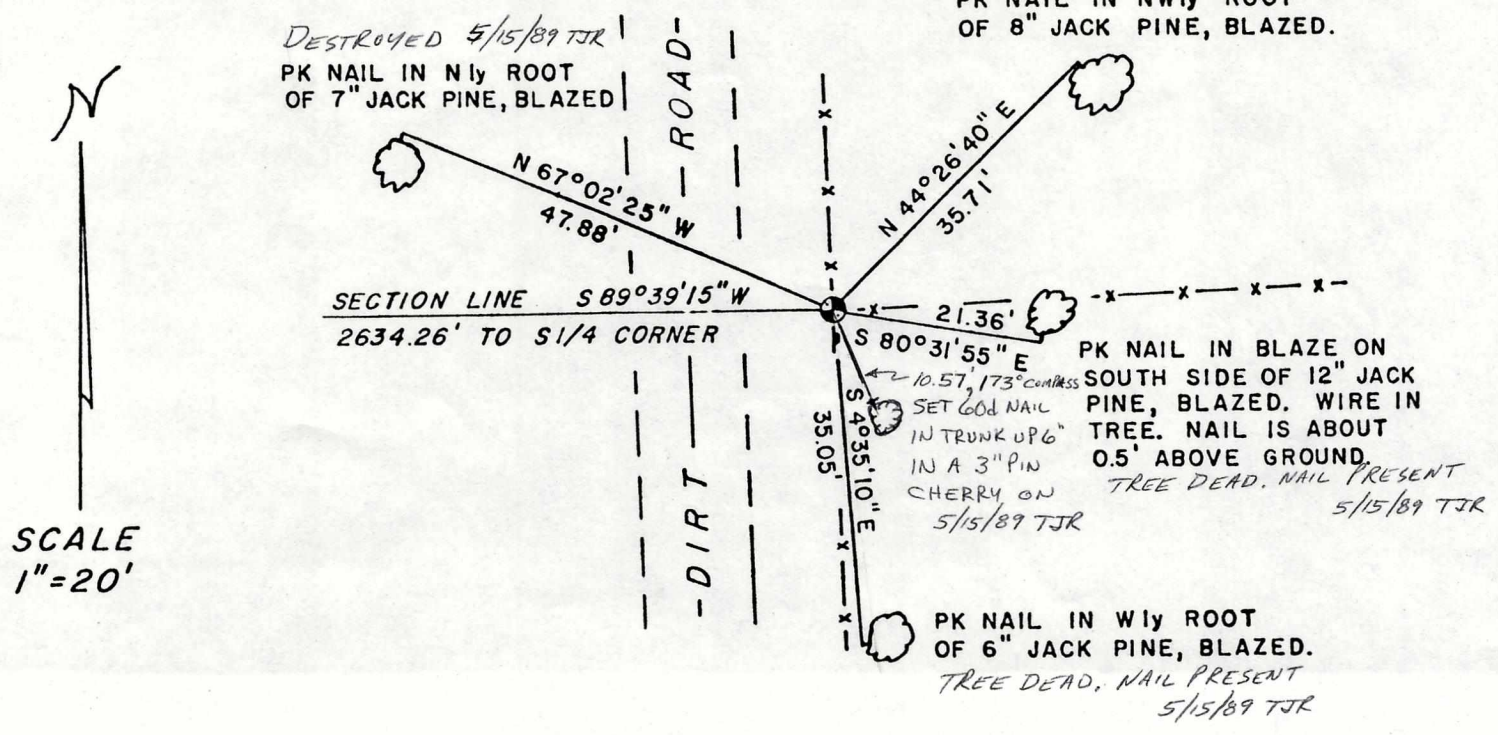
SEAL:

DATA SHOWN HERE ON CERTIFIED CORRECT:

Norman R. Hurlburt
Registered Land Surveyor
DATE: DEC. 30, 1982

TIE SKETCH

Show at least four ties, also fence lines, roads, topo, size and type of witness trees and if off road - best way to arrive at corner.



I traversed to all apparent evidence of corners along the south line of sections 1 through 6 and found this to be a reasonably straight line ($\pm 25'$). Original government distances north from corners on this line indicate there was a major bend at the corner in question. The distance from Mr. Solberg's pipe to my computed corner south would be 20 to 30 feet over government distance. The distance to the monumented corner 2 miles north is about 25 feet over.

With this evidence in mind, I concluded the existing pipe to be as close to the original corner position as could be determined, and accepted it as such. I replaced the pipe with a Berntsen monument and drove a steel witness post with sign 1.0 foot South.

CERTIFICATE

CERTIFIED LAND CORNER

No. 127

21905330000

I, Norman R. Hurlburt, do hereby certify that on the 25th day of January 1983, I found (evidence) (~~no evidence~~) of the SW corner of Sec. 34, T19 N, R 5 W, Fourth Principal Meridian, and I re-established said corner according to the Wisconsin Statutes as shown and described hereon.

Dated this 21st day of June 1983.

Norman R. Hurlburt
 Title S-1104

History of original corner establishment: since original government survey

Clayton Solberg ties his description to this corner in La Crosse County certified survey map No. 78 of Vol. 2, but does not indicate any monument here.

Description of corner evidence found:

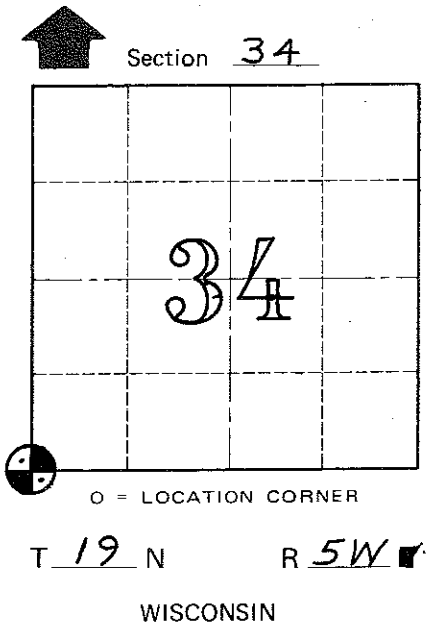
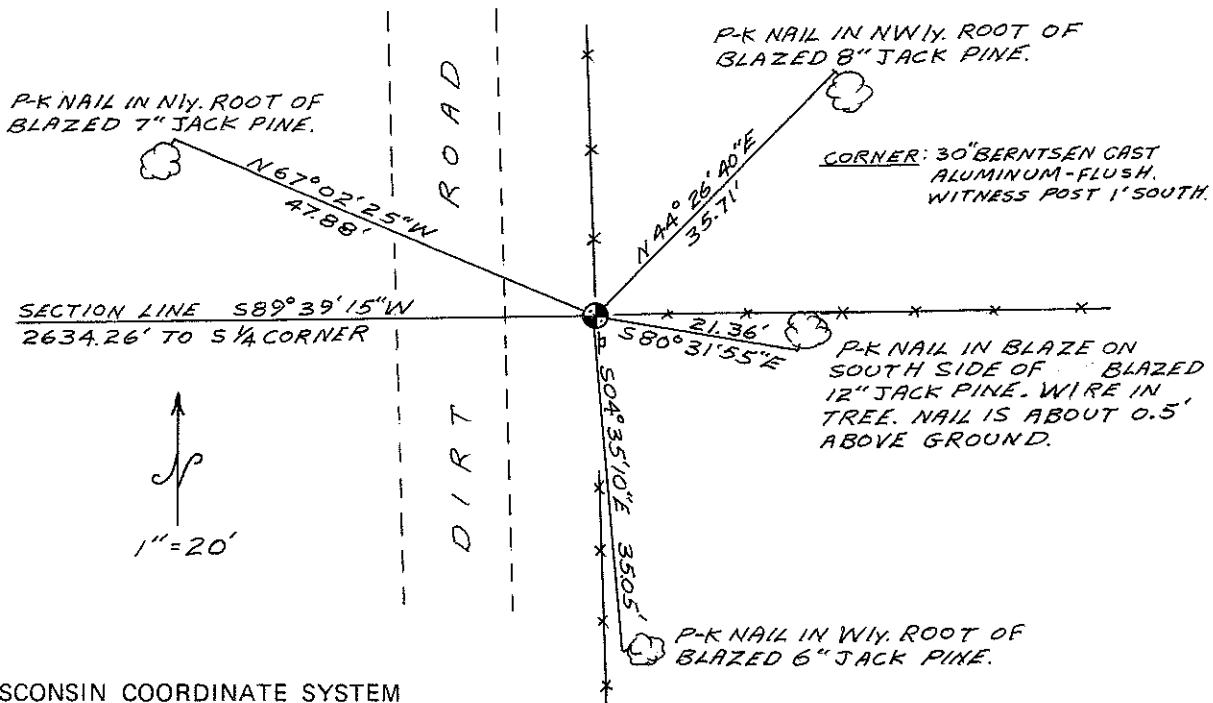
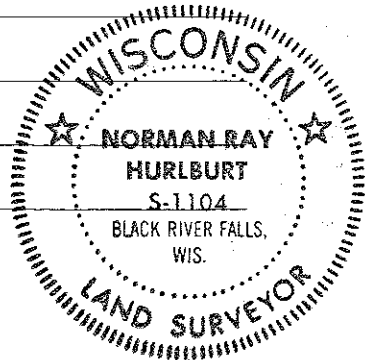
I found a 3/4" pipe at the fence corner here which I assumed to be Mr. Solberg's. To verify its location, I traversed to all monumented or occupied corners from the SW 31 to the SE 36. The distance from the SE 31 to the SE 36 averages 5.4' per half mile short of original. The pipe is within 2 feet of correct proportion. A straight line between the same points falls about 170 feet North of the pipe, but the general line of occupation points toward the pipe, indicating a bend here. I traversed to all apparent evidence of corners along the south line of sections 1-6 and found this to be a reasonably straight line (±25'). Original distances north from this line indicate a major bend at the corner in question. Proportioned distances north and south also would indicate the pipe to be reasonable, so I accepted it and replaced it with a Berntsen Monument. I drove a steel witness post with sign 1.0 foot south.

Description of corner and witness monuments, references and accessories used to perpetuate the original or re-established location of this corner:

Witnesses to corner location:

N. Hurlburt

D. Melichar



COUNTY SURVEYOR FORM NO. 1

SURVEY CONTROL ORDER

Horizontal	_____
Vertical	_____

WISCONSIN COORDINATE SYSTEM

Corner	East (X)	North (Y)	Elevation (Z)	Zone
Control Sta. Name				

City, Village or Town Little Falls

County of Monroe