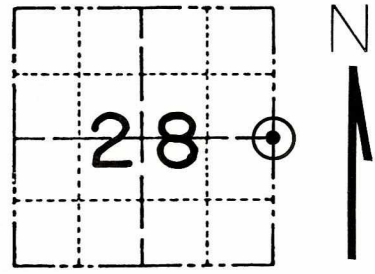


Government Land Corner Certificate

Jackson County

CORNER VOL. 5, PAGE 725
 CORNER # 21905282000
 SECTION 28, T. 19 N, R. 5W

TYPE OF MONUMENT: 30" Harrison Cast Iron
~~STATE PLATE~~ COORDINATES: N 23468.8292 WISCRS NAD83(91)
 E 54615.3350 Ethan D. Remus
 ELEVATION — M.S.L. DATUM: 1/5/2016
 THETA ANGLE: _____
 FIELD BOOK: HSE File 82N-018
 DRAWN BY: D.W. MELICHAR page _____
 REFERENCED FOR SURVEY RECORDED IN: _____



BASIS FOR MONUMENT LOCATION

Show info such as: History of corner, with reference to Vol. and pg., dates, surveyor; exact description of monument replaced; if location computed, by taped or EDM traverse; landowner remarks, etc. (Use reverse side if necessary)

I have found no record of this corner having been used since the original survey. After considerable studying, I set the corner on the North-South fence line, equidistant between section corners. I set a Harrison monument at the corner and drove a steel witness post with sign 1.0 foot East.

LOCATION
 (Shown by monument symbol)

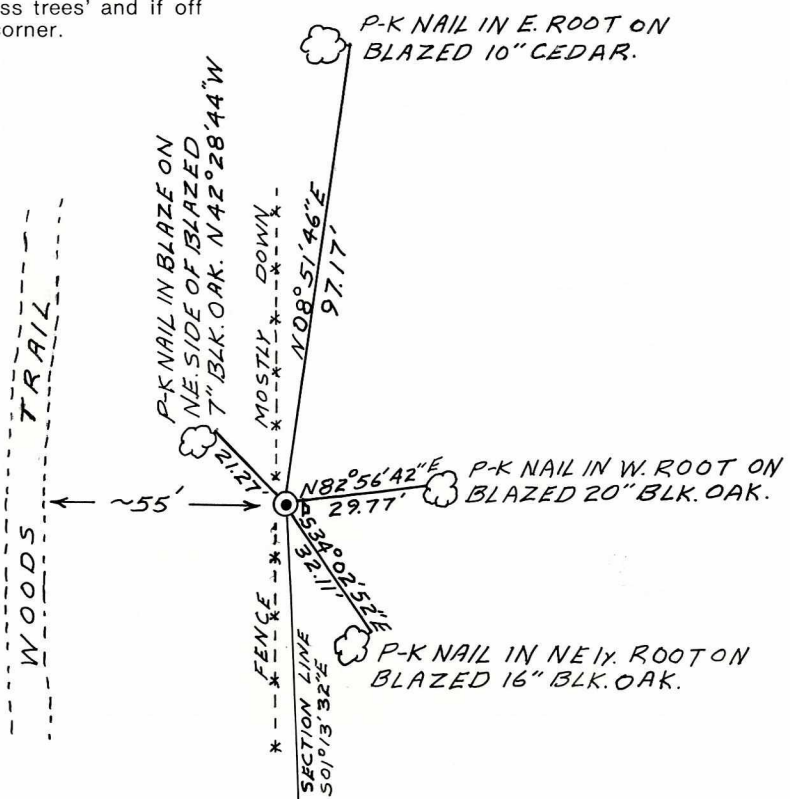
SEAL:

DATA SHOWN HERE ON
 CERTIFIED CORRECT:

Norman R. Hurlburt
 Registered Land Surveyor
 DATE: JUNE 29, 1983

TIE SKETCH

Show at least four ties, also fence lines, roads, topo, size and type of witness trees' and if off road - best way to arrive at corner.



THIS AREA FOR COUNTY SURVEYOR INFORMATION

ACCT. INFO.: Invoice # _____, Date paid ____/____/____, Check # _____.

Maintenance report: (date, surveyor reporting, cond. of monument, condition of references, new references

Note to surveyor filing this record: Please indicate maintenance priority: HIGH _____, MED. X, LOW _____
Continue notes from front here:

21905282000

I, Norman R. Hurlburt, do hereby certify that on the 11th day of April 1983, I found ~~(evidence)~~ (no evidence) of the W/4 corner of Sec. 27, T 19 N, R 5W Fourth Principal Meridian, and I re-established said corner according to the Wisconsin Statutes as shown and described hereon.

History of corner establishment since Original Government Survey

None on record

Description of corner evidence found:

This corner was set on the north-south fence line, equidistant between section corners.

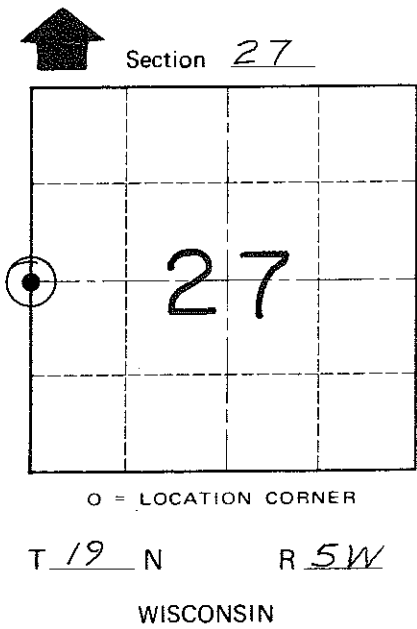
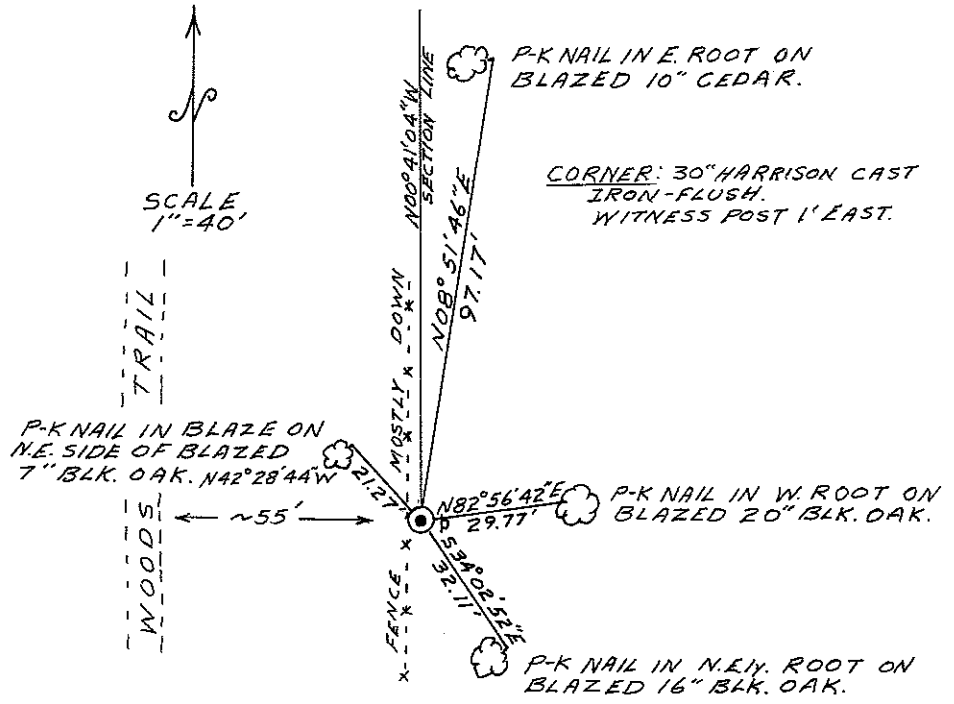
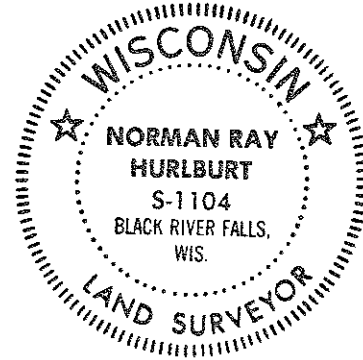
Dated this 4th day of May 1983.

Norman R. Hurlburt

Norman R. Hurlburt S-1104
Title

Description of corner and witness monuments, references and accessories used to perpetuate the original or re-established location of this corner:

Witnesses to corner location:
N. Hurlburt
D. Melichar



Approved: **HARLEY A. SIME**
MONROE CO. SURVEYOR

SURVEY CONTROL ORDER

Horizontal	_____
Vertical	_____

WISCONSIN COORDINATE SYSTEM

Corner	East (X)	North (Y)	Elevation (Z)	Zone
Control Sta. Name				

City, Village or Town Little Falls
County of Monroe

COUNTY SURVEYOR FORM NO. 1