

Government Land Corner Certificate

Jackson County

CORNER VOL. 5, PAGE 722

CORNER # 21905280000

TYPE OF MONUMENT: 2" x 40" Brass Capped Pipe

SECTION 33, T 19 N, R 5W

~~STATE PLANE~~ COORDINATES: N 20822.7359
E 54646.4814

WISCRS NAD83(91)

Ethan D. Remus

ELEVATION — M.S.L. DATUM: _____

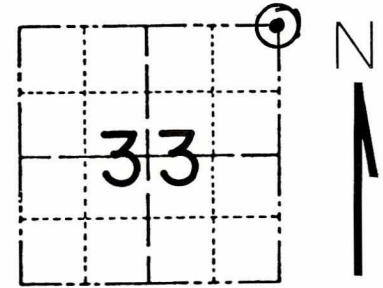
1/5/2016

THETA ANGLE: _____

FIELD BOOK: HSE File 82N-018

DRAWN BY: D.W. MELICHAR page _____

REFERENCED FOR SURVEY RECORDED IN: _____



BASIS FOR MONUMENT LOCATION

Show info such as: History of corner, with reference to Vol. and pg., dates, surveyor; exact description of monument replaced; if location computed, by taped or EDM traverse; landowner remarks, etc. (Use reverse side if necessary)

I have found no record of this corner being monumented since the original government survey. After extensive study, I placed the corner on the North-South fence line midway between section corners North and South. This makes the distance west short, but not unreasonable considering it is all creek bottom. The distance east to the occupied quarter corner is short, to the section corner is long. With these distances inconclusive, I decided the fence line was the best location. I drove a brass capped pipe at the corner and drove a steel witness post with sign 1.0 foot North.

LOCATION
(Shown by monument symbol)

SEAL:



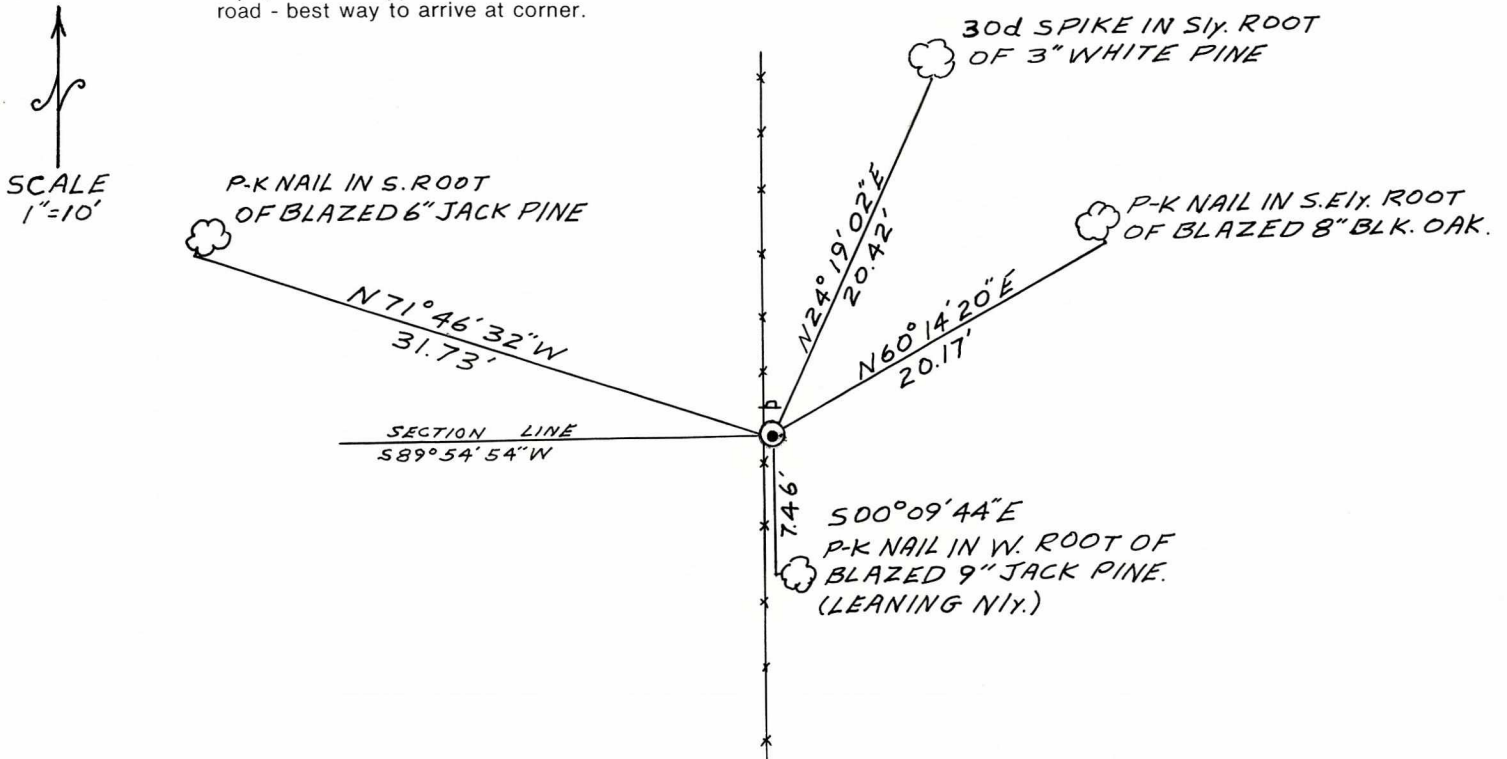
DATA SHOWN HERE ON
CERTIFIED CORRECT:

Norman R. Hurlburt
Registered Land Surveyor

DATE: JUNE 29, 1983

TIE SKETCH

Show at least four ties, also fence lines, roads, topo, size and type of witness trees' and if off road - best way to arrive at corner.



THIS AREA FOR COUNTY SURVEYOR INFORMATION

ACCT. INFO.: Invoice # 3890 , Date paid 6/28/83 , Check # 9655 .

Maintenance report: (date, surveyor reporting, cond. of monument, condition of
references, new references

Note to surveyor filing this record: Please indicate maintenance priority: HIGH , MED. X , LOW
Continue notes from front here:

21905280000

I, Norman R. Hurlburt, do hereby certify that on the 11th day of April 19 83, I found ~~(evidence)~~ (no evidence) of the NW corner of Sec. 34, T 19 N, R 5W Fourth Principal Meridian, and I re-established said corner according to the Wisconsin Statutes as shown and described hereon.

Dated this 4th day of May 19 83.

Norman R. Hurlburt

Norman R. Hurlburt S-1104
Title

History of corner establishment since Original Government Survey

None on record.

Description of corner evidence found:

This corner was set on the north-south fence line, equidistant between established corners 1 mile north and south. The distances east and west along this line are somewhat erratic, with no definite pattern to prove or disprove this location, so I accepted the north-south fence line.

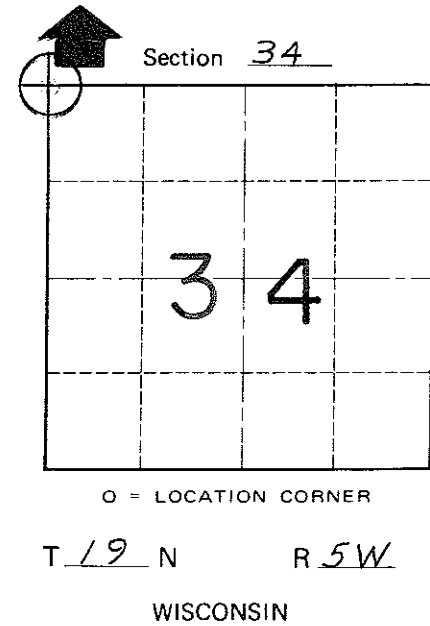
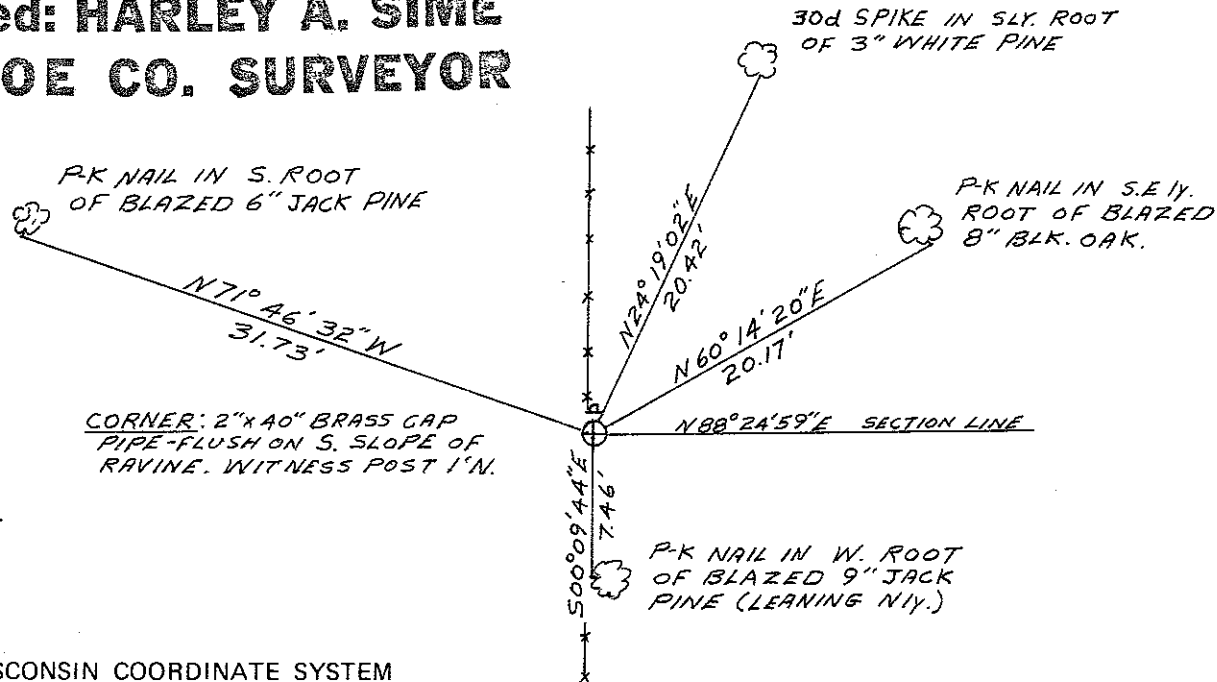
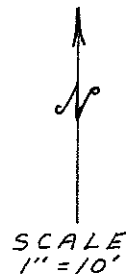
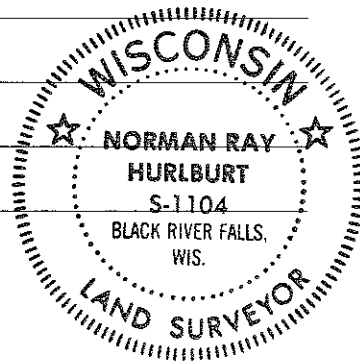
Description of corner and witness monuments, references and accessories used to perpetuate the original or re-established location of this corner:

Witnesses to corner location:

N. Hurlburt

D. Melichar

Approved: **HARLEY A. SIME**
MONROE CO. SURVEYOR



COUNTY SURVEYOR FORM NO. 1

SURVEY CONTROL ORDER

Horizontal	_____
Vertical	_____

WISCONSIN COORDINATE SYSTEM

Corner	East (X)	North (Y)	Elevation (Z)	Zone
Control Sta. Name				

City, Village or Town Little Falls
County of Monroe