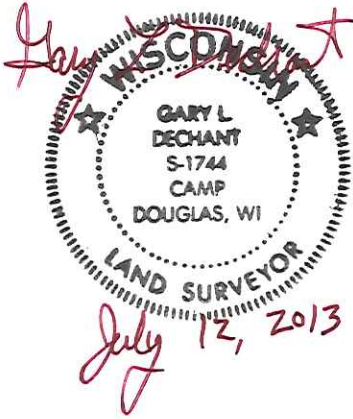


# U.S. LAND CORNER MAINTENANCE

Corner ID : W¼ Sec. 26, T19N-R5W  
21905272000

<u>DATE</u>	<u>CREW</u>	<u>MONUMENT TYPE</u>	<u>REFERENCES</u>	<u>BEARING</u>	<u>DISTANCE</u>
7- 12-2013	Zachariah P.Dechant Gary L. Dechant	Existing cast iron TCP We placed 6' anchor and concrete around TCP	NOTE: All references set by Jeatran in good shape, We drove them down 6". The only problem I see is the references were set to close to trees. The trees may grow over them.		



CERTIFICATE

I, Timothy J. Jeatran, do hereby certify that on the 6th day of December 1999, I found (evidence) ~~(no evidence)~~ of the West corner of Section 26, T19 N, R 5W Fourth Principal Meridian, and I re-established said corner according to the Wisconsin Statutes as shown and described hereon.

Dated this 8th day of Dec. 19 99.

*Timothy J. Jeatran*

Timothy J. Jeatran S-2306  
Title

CERTIFIED LAND CORNER

No. 98

21905272000

History of corner establishment since Original Government Survey

G.M. Adams was at this corner in a survey dated December 2, 1861, but does not indicate any remonumentation.

Description of corner evidence found:

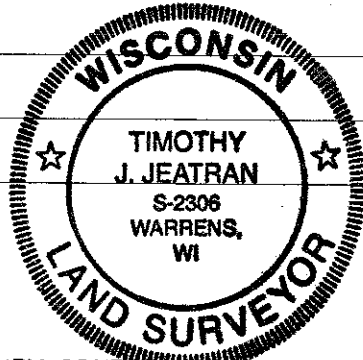
This corner was set at the existing fence corner. This location puts a bend in the west line of section 26 but it fits measurements to the SW corner of section 26 and the forty fence corner 1/4 mile west.

Description of corner and witness monuments, references and accessories used to perpetuate the original or re-established location of this corner:

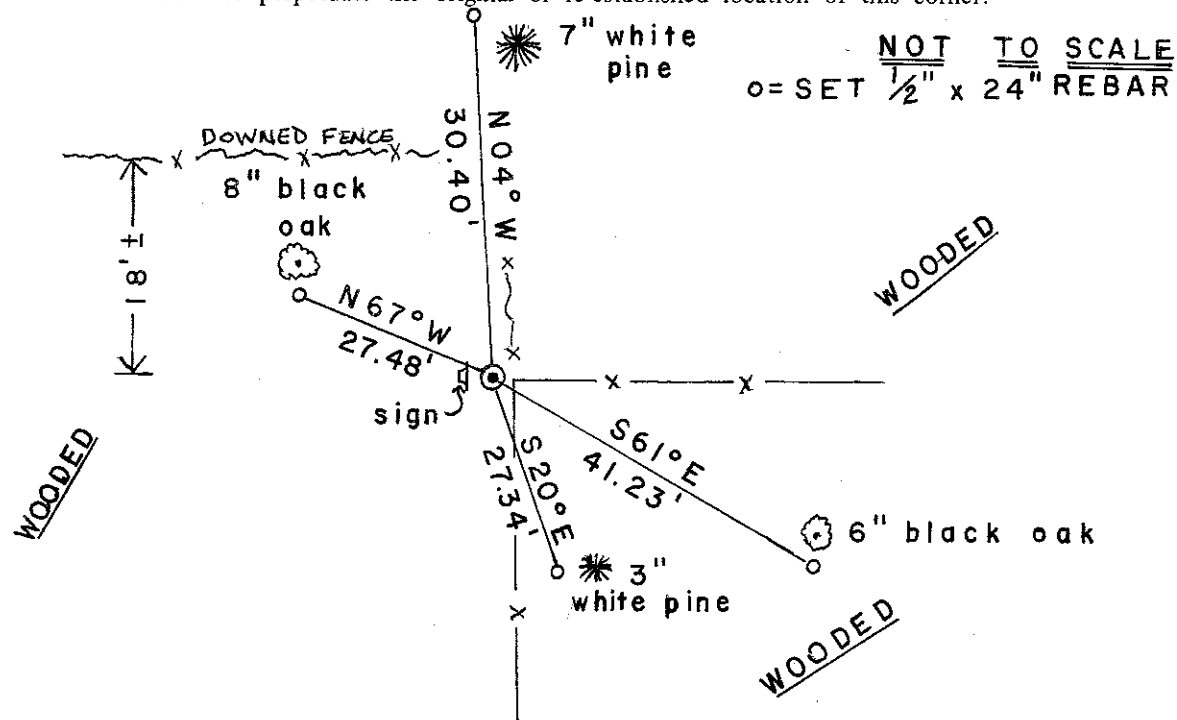
Witnesses to corner location:

Timothy J. Jeatran

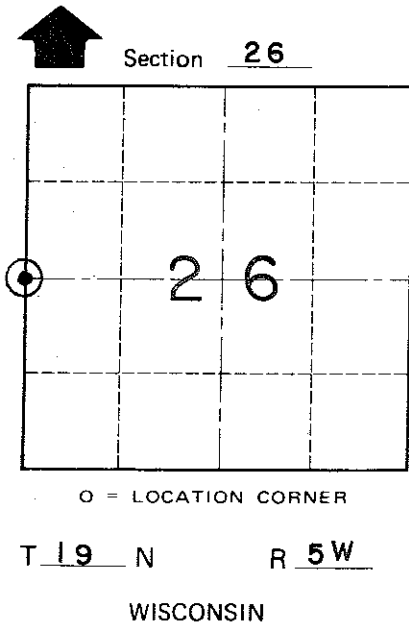
Aaron T. Stockwell



COUNTY SURVEYOR FORM NO. 1



NOT TO SCALE  
O = SET 1/2" x 24" REBAR



SURVEY CONTROL ORDER

Horizontal	_____
Vertical	_____

WISCONSIN COORDINATE SYSTEM

Corner	East (X)	North (Y)	Elevation (Z)	Zone
Control Sta. Name				

City, Village or Town Little Falls

County of Monroe