

CERTIFICATE

CERTIFIED LAND CORNER

No. 106

21905270020

I, Norman R. Hurlburt, do hereby certify that on the 11th day of April 19 83, I found (evidence) (no evidence) of the NW corner of Sec. 34, T 19 N, R 5 W Fourth Principal Meridian, and I re-established said corner according to the Wisconsin Statutes as shown and described hereon.

Dated this 4th day of May 19 83.

Norman R. Hurlburt
Norman R. Hurlburt S-1104
Title

History of corner establishment since Original Government Survey

None on record

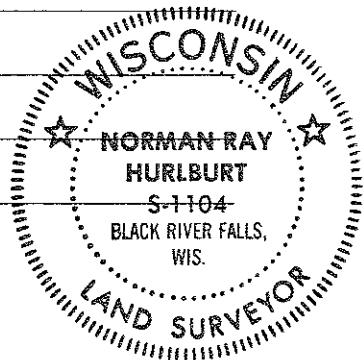
Description of corner evidence found:

This corner was placed on line between section corners east and west, and on the occupied quarter line of Section 27. This also falls on line with a row of 80-year old elm trees to the south. This position is over 100 feet west of midway between section corners, but I found no other evidence to refute the occupied north-south line. There is a straight east-west fence about 35 feet south, but since I disregarded that fence at the section corners, I did the same here.

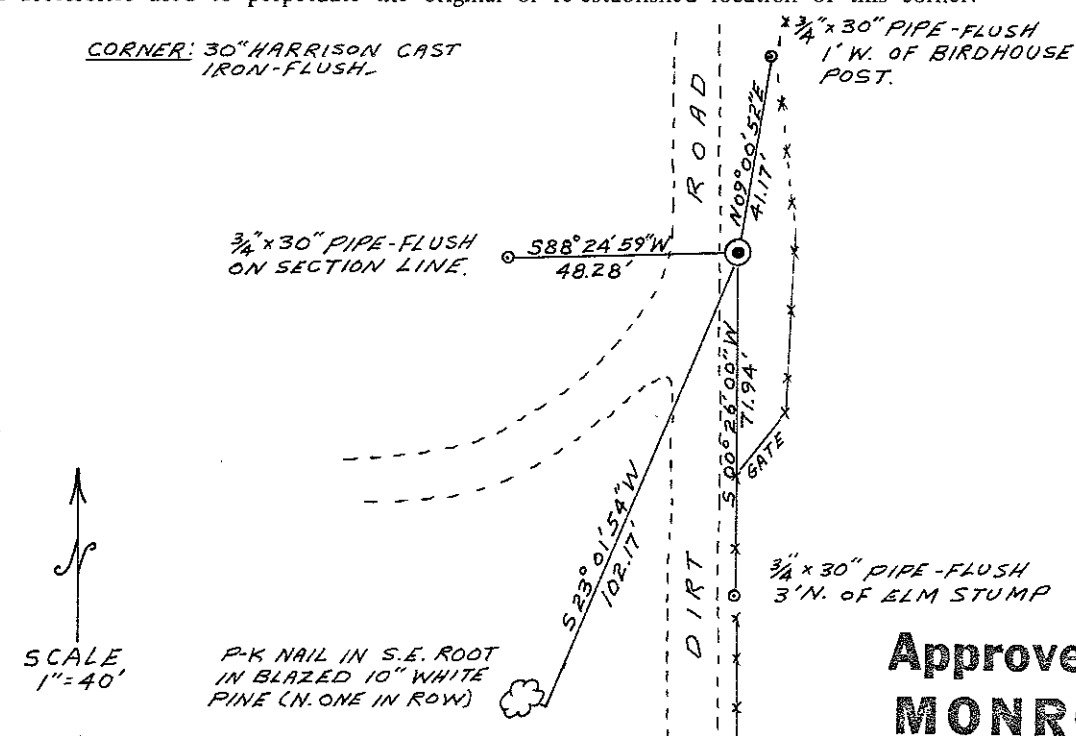
Description of corner and witness monuments, references and accessories used to perpetuate the original or re-established location of this corner:

Witnesses to corner location:

N. Hurlburt
D. Melichar

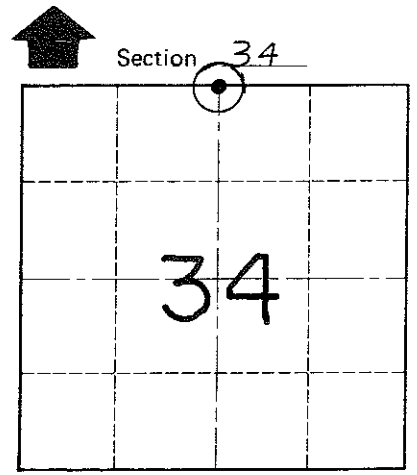


CORNER: 30" HARRISON CAST IRON-FLUSH.



SCALE 1"=40'

P-K NAIL IN S.E. ROOT IN BLAZED 10" WHITE PINE (N. ONE IN ROW)



O = LOCATION CORNER
T 19 N R 5 W
WISCONSIN

Approved: HARLEY A. SIMÉ
MONROE CO. SURVEYOR

City, Village or Town Little Falls
County of Monroe

COUNTY SURVEYOR FORM NO. 1

Table with 2 rows: Horizontal, Vertical under the heading SURVEY CONTROL ORDER.

Table with 5 columns: Corner, Control Sta. Name, East (X), North (Y), Elevation (Z), Zone.