

21905270000

I, Norman R. Hurlburt, do hereby certify that on the 11th day of April 1983, I found ~~(evidence)~~ (no evidence) of the NE corner of Sec. 34, T19 N, R5W Fourth Principal Meridian, and I re-established said corner according to the Wisconsin Statutes as shown and described hereon.

Dated this 4th day of May 1983.

Norman R. Hurlburt
Title S-1104

History of corner establishment since Original Government Survey

Geo. M. Adams used this corner in Jackson County Survey Record No. 16, Vol. 1, P. 9, dated 1861, but does not indicate any remonumentation.

Description of corner evidence found:

This corner was set on the north-south fence line, equidistant between occupied corners a half mile (nearly perfect 2640 ft.) north and south. This position is about 20 feet south of the north line of the NE $\frac{1}{4}$ of Sec. 35 projected, and about 1300 feet south of a road running west across Sec. 27. The old fence and berm running west seem to be too far north to be a likely corner position.

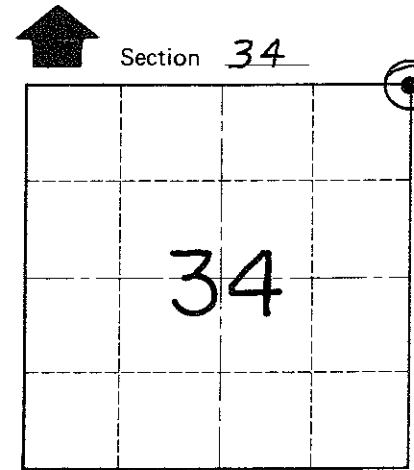
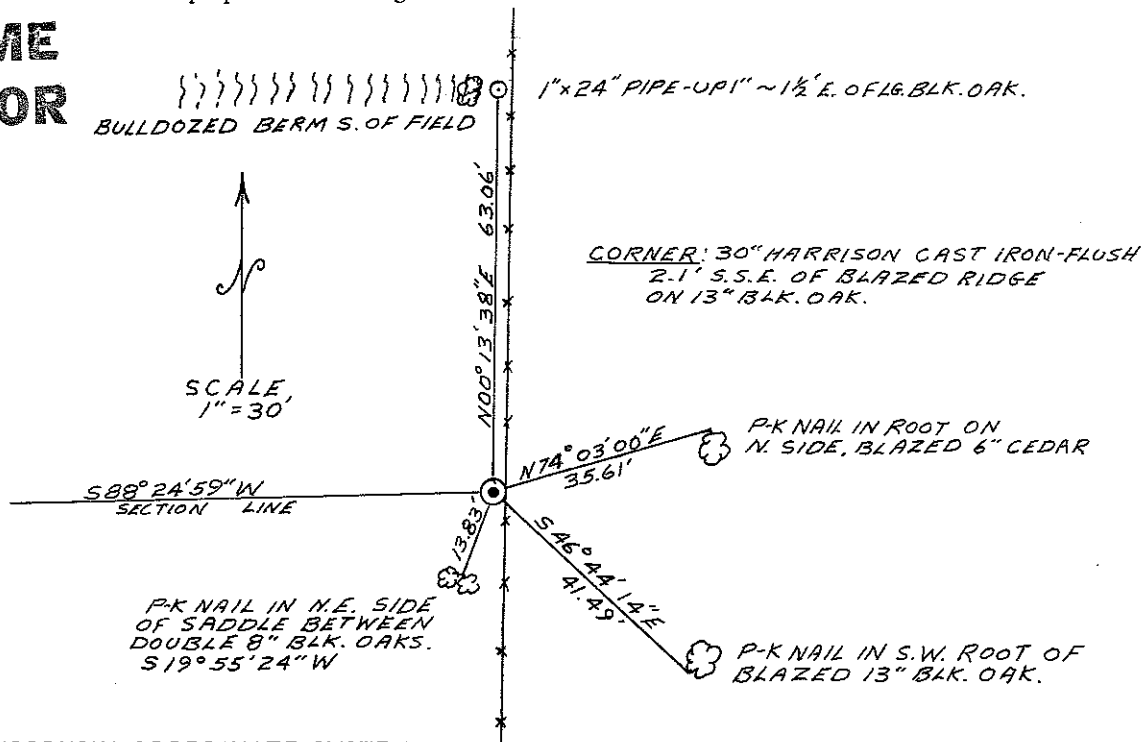
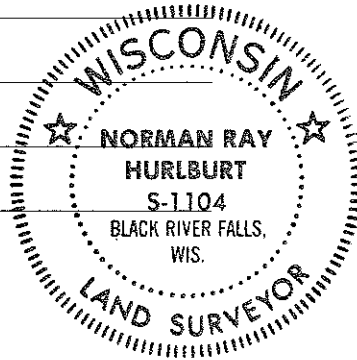
This position puts about a 4° deflection in the north south line here and the distance west is very long. The distance east is short (2614' vs 40.33 ch.), but the two half miles across Sec. 35 are nearly equal. Adams found the distance east short also (40.00 ch), though not as much. The corner lines up well with the road north of here which was laid on the section line in 1894.

Description of corner and witness monuments, references and accessories used to perpetuate the original or re-established location of this corner:

Approved: **HARLEY A. SIME**
MONROE CO. SURVEYOR

Witnesses to Norman R. Hurlburt
N. Hurlburt

D. Melichar



O = LOCATION CORNER
T 19 N R 5W
WISCONSIN

COUNTY SURVEYOR FORM NO. 1

SURVEY CONTROL ORDER

Table with 2 rows: Horizontal, Vertical.

WISCONSIN COORDINATE SYSTEM

Table with 5 columns: Corner, Control Sta. Name, East (X), North (Y), Elevation (Z), Zone.

City, Village or Town Little Falls
County of Monroe