

U.S. LAND CORNER MAINTENANCE

Corner ID : E¼ Sec. 26, T19N-R5W
21905262000

<u>DATE</u>	<u>CREW</u>	<u>MONUMENT TYPE</u> -----
7- 12-2013	Zachariah P.Dechant Gary L. Dechant	Existing cast iron Harrison We placed 6' anchor and concrete around Harrison

References:

Set ¾" hexagon Iron bar, down 8", 3' SW of 8" white oak
Set ¾" hexagon iron bar, down 8" in west track of trail
Set ¾" hexagon iron bar down 8" in west track of trail
Set ¾" hexagon iron bar in trail, down 8"

<u>Bearing</u>	<u>Distance</u>
S42E	28.93'
S2W	36.62'
S58W	13.80'
N32E	33.06'

Gary L. Dechant

July 12, 2013

CERTIFICATE

CERTIFIED LAND CORNER

No. 99

21905262000

I, Bryan H. Meyer, do hereby certify that on the 17th day of June 19 84, I found (evidence) ~~XXXXXXXXXX~~ of the West 1/4 corner of Section 25, T 19 N, R 5 W Fourth Principal Meridian, and I re-established said corner according to the Wisconsin Statutes as shown and described hereon.

Dated this 7th day of Feb. 19 85.

Bryan H. Meyer

Deputy County Surveyor

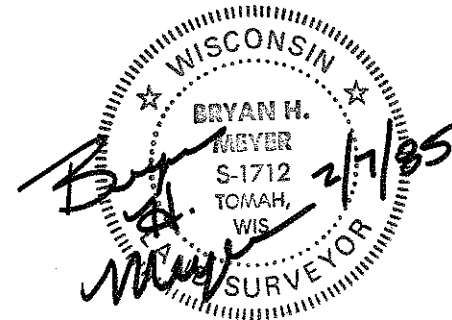
Title

History of corner establishment since Original Government Survey

No recorded history.

Description of corner evidence found:

I accepted a four-way fence corner as the best available evidence.



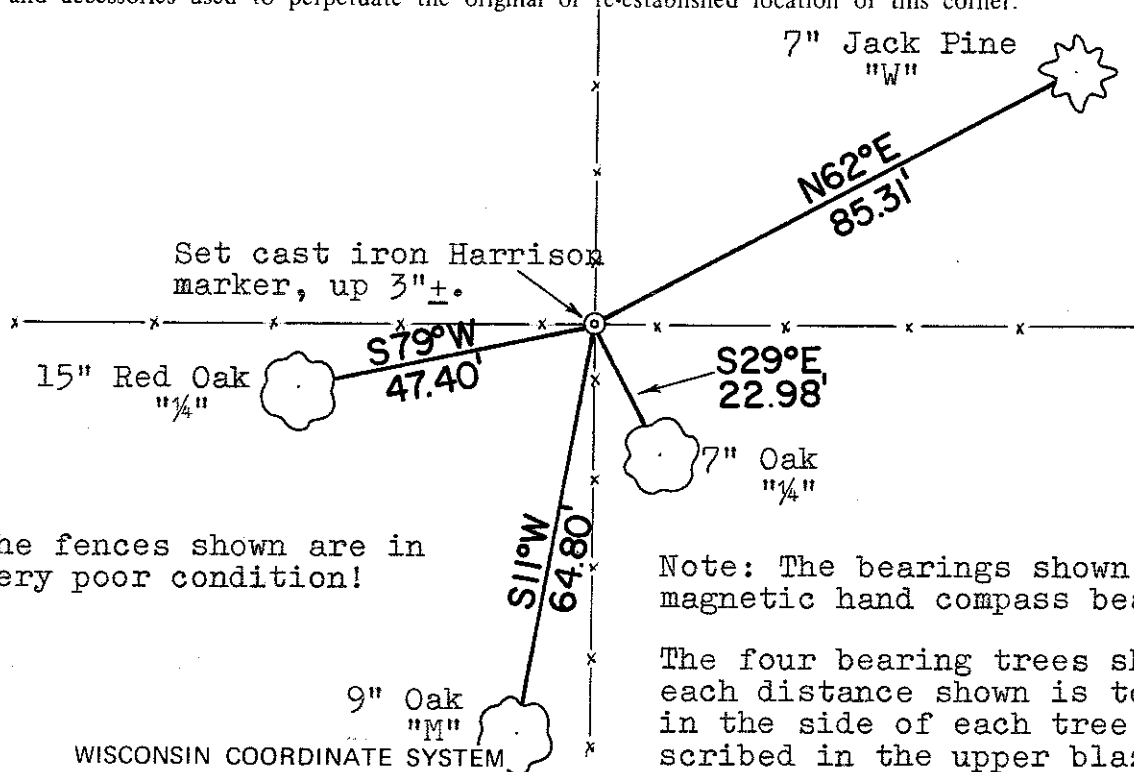
COUNTY SURVEYOR FORM NO. 1

Description of corner and witness monuments, references and accessories used to perpetuate the original or re-established location of this corner:

Crew: Meyer, Wilhite
Date: July 17, 1984 - 2:00 P. M.
Weather: Overcast, Windy, 65°±.
Witnesses to corner location:

Bryan H. Meyer - R. L. S. 1712

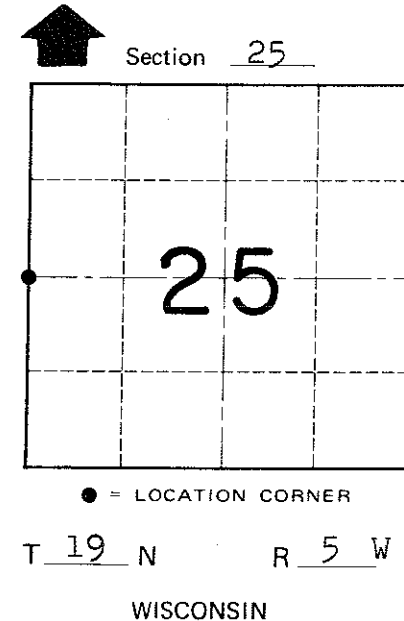
Dallas Wilhite



The fences shown are in very poor condition!

Note: The bearings shown are magnetic hand compass bearings.

The four bearing trees shown are double blazed; each distance shown is to a nail set in a hack in the side of each tree. Each tree is also scribed in the upper blaze.



SURVEY CONTROL ORDER

Horizontal	_____
Vertical	_____

WISCONSIN COORDINATE SYSTEM

Corner	East (X)	North (Y)	Elevation (Z)	Zone
Control Sta. Name				

~~XXXXXXXXXX~~ Town of Little Falls
County of Monroe