

CERTIFICATE

CERTIFIED LAND CORNER

No. 103

21905260000

I, Norman R. Hurlburt, do hereby certify that on the 29th day of April 19 83, I found (no evidence) of the NE corner of Sec. 35, T 19 N, R 5W, Fourth Principal Meridian, and I re-established said corner according to the Wisconsin Statutes as shown and described hereon.

Dated this 4th day of May 19 83.

Norman R. Hurlburt S-1104 Title

History of original corner establishment:

None on record

Description of corner evidence found:

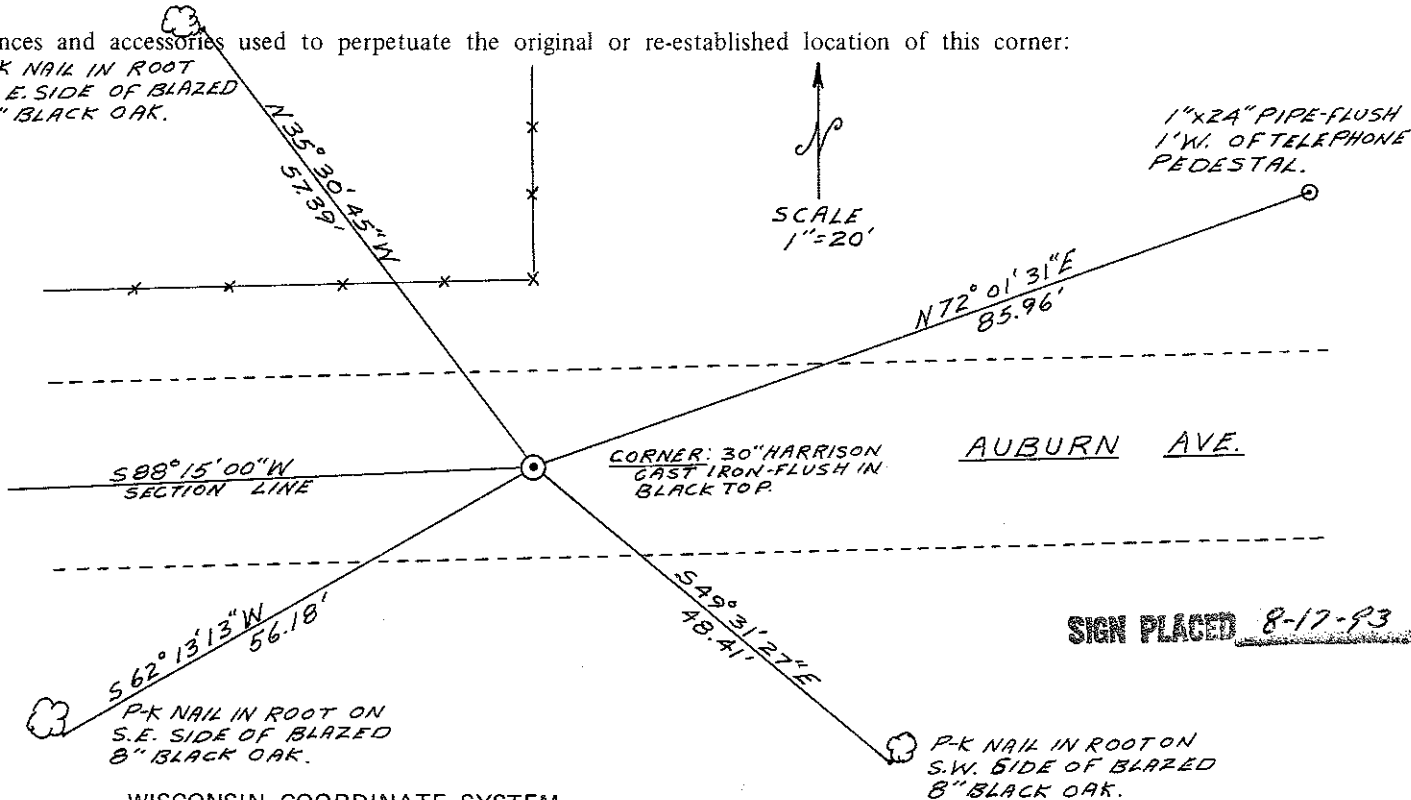
This corner was set on the road centerline and line of fence north. This position is quite reasonable for distance east and south. The distance west is short, but well proportioned across Section 35

Approved: HARLEY A. SIME MONROE CO. SURVEYOR

COUNTY SURVEYOR FORM NO. 1

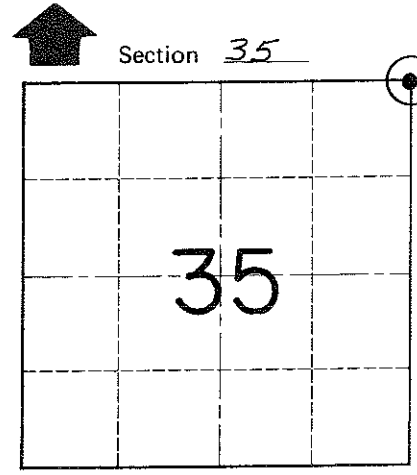
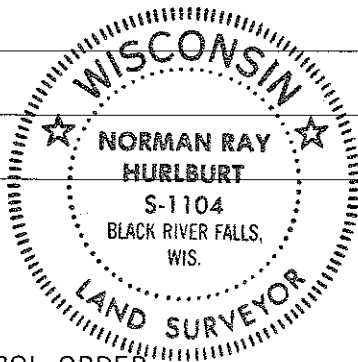
Description of corner and witness monuments, references and accessories used to perpetuate the original or re-established location of this corner:

P-K NAIL IN ROOT ON E. SIDE OF BLAZED 20" BLACK OAK.



Witnesses to corner location:

N. Hurlburt D. Melichar



O = LOCATION CORNER

T 19 N R 5 W

WISCONSIN

SIGN PLACED 8-17-93

SURVEY CONTROL ORDER

Table with 2 rows: Horizontal, Vertical

WISCONSIN COORDINATE SYSTEM

Table with 5 columns: Corner, East (X), North (Y), Elevation (Z), Zone

City, Village or Town Little Falls

County of Monroe