

21905252000

I, William C. Jung, do hereby certify that on the 13th day of August 19 83, I found (evidence) ~~(no evidence)~~ of the West 1/4 corner of Section 30, T 19 N, R 4 W Fourth Principal Meridian, and I re-established said corner according to the Wisconsin Statutes as shown and described hereon.

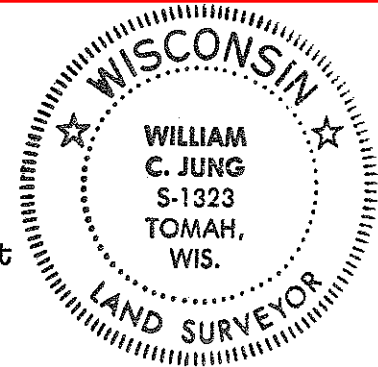
History of corner establishment since Original Government Survey
Fred Holden was at this corner in December of 1903 and calls for a 8" white oak, S75 1/2°W, 29.04 feet.

Dated this 20th day of Sept. 19 83.

Description of corner evidence found:

I found what I believe to be Holden's old bearing tree to the Southwest and reset the corner by using this tree,

William C. Jung
Deputy County Surveyor, R.L.S. 1323
Title



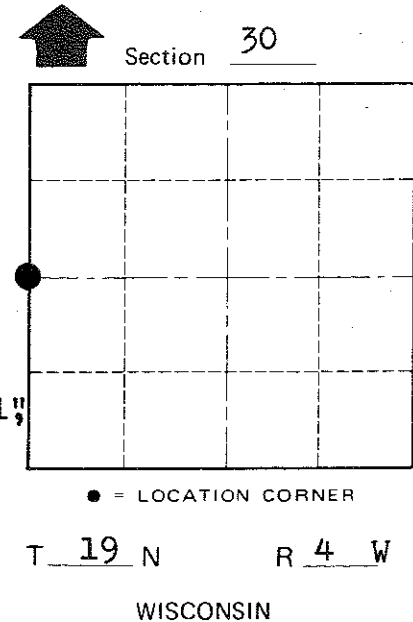
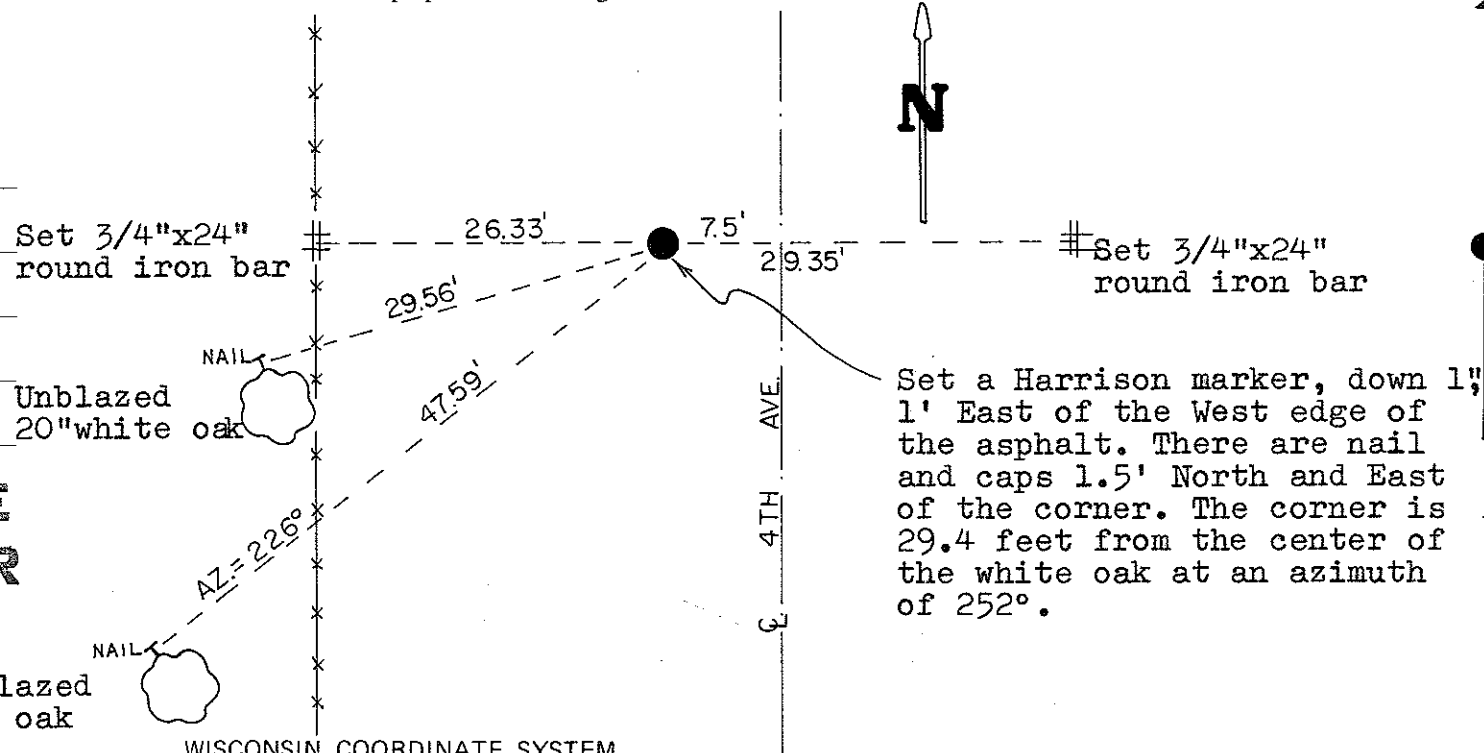
COUNTY SURVEYOR FORM NO. 1

Description of corner and witness monuments, references and accessories used to perpetuate the original or re-established location of this corner:

Witnesses to corner location:

William C. Jung

Dallas Wilhite



Set a Harrison marker, down 1", 1' East of the West edge of the asphalt. There are nail and caps 1.5' North and East of the corner. The corner is 29.4 feet from the center of the white oak at an azimuth of 252°.

Approved: **HARLEY A. SIME**
MONROE CO. SURVEYOR

SURVEY CONTROL ORDER

Horizontal	Double blazed 15" burr oak
Vertical	

WISCONSIN COORDINATE SYSTEM

Corner	East (X)	North (Y)	Elevation (Z)	Zone
Control Sta. Name				

City, Village or Town Little Falls
County of Monroe
Wisconsin