

CERTIFICATE

CERTIFIED LAND CORNER

No. 102

21905250020

I, William C. Jung, do hereby certify that on the 19th day of November 1979, I found (evidence) (no evidence) of the North 1/4 corner of Section 36, T19 N, R 5 W, Fourth Principal Meridian, and I re-established said corner according to the Wisconsin Statutes as shown and described hereon.

Dated this 4th day of Feb. 1981.

William C. Jung

William C. Jung, R.L.S. 1323

Approved: HARLEY A. SIME MONROE CO. SURVEYOR

Description of corner and witness monuments, references and accessories used to perpetuate the original or re-established location of this corner:

History of original corner establishment:

Harley Sime shows an iron pipe at this corner in his survey of May, 1963.

Description of corner evidence found:

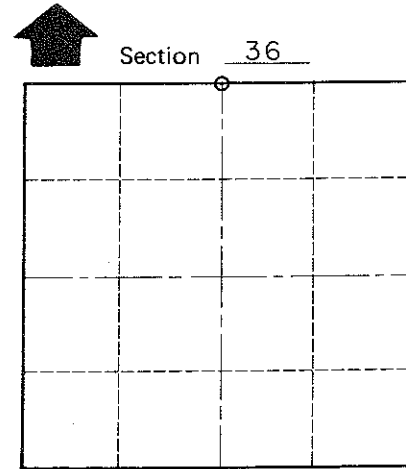
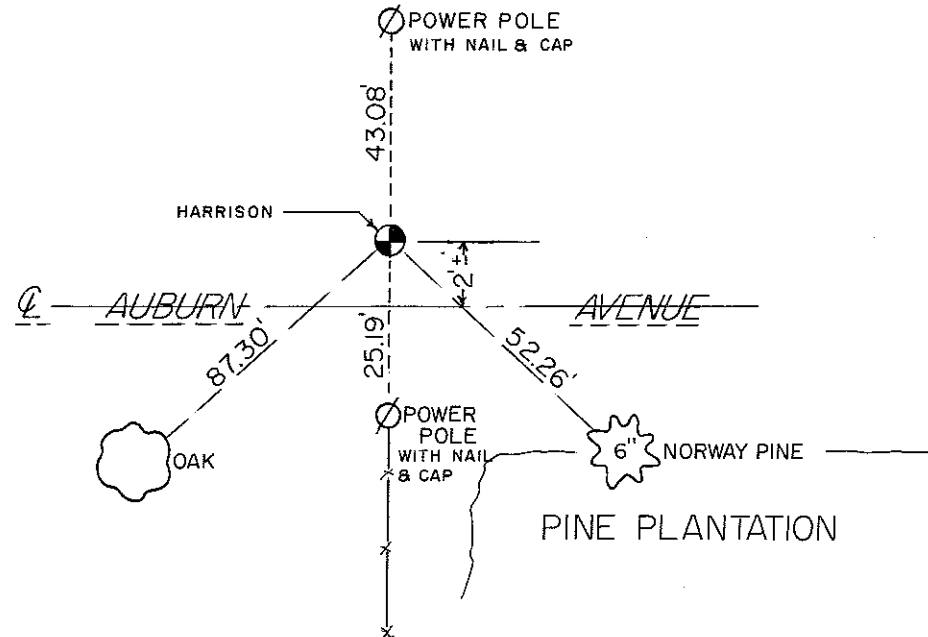
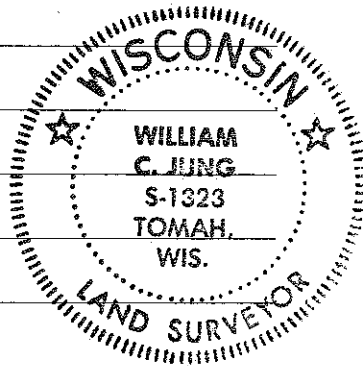
Replaced railroad spike with Harrison Monument. Found spike down 18" over 1 1/2" iron pipe which was down 24". Set Harrison over iron pipe. Set 24" of Harrison and put all pieces of Harrison in hole. Accepted Sime's corner at the occupied corner.

COUNTY SURVEYOR FORM NO. 1

NOTE: TREES BLAZED WITH NAIL & CAP SET

Witnesses to corner location:

Jung
Pietz
Tormoen



O = LOCATION CORNER
T 19 N R 5 W
WISCONSIN

SIGN PLACED 8-17-93

SURVEY CONTROL ORDER

Table with 2 rows: Horizontal, Vertical

WISCONSIN COORDINATE SYSTEM

Table with 5 columns: Corner, East (X), North (Y), Elevation (Z), Zone

or Town Little Falls
County of Monroe