

2 20 04 36 0020

Government Land Corner Certificate

Jackson County

CORNER NO. _____

SECTION 36

TOWN 20 N

RANGE 4 W

TYPE OF MONUMENT: 2" BRASS CAP PIPE

~~STAKE~~ COORDINATES: N 47564.7653

WISCRS NAD 83(91)

E 99546.5788

12/21/2015

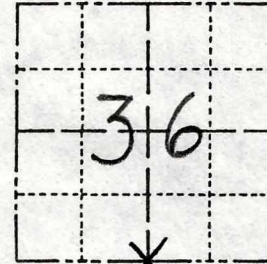
ELEVATION — M.S.L. DATUM: _____

Ethan Remus

THETA ANGLE: _____

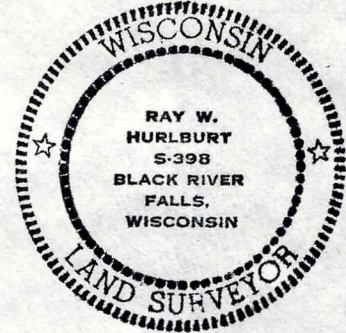
FIELD BOOK: _____ PAGE _____

DRAWN BY: D. W. MELICHAR



LOCATION (Indicated by 'X')

SEAL:



BASIS FOR MONUMENT LOCATION Ref.- "J" of Co.S.Rec. No.2188, Vol.6, P.265

Show info such as: History of corner, with reference to Vol. and pg., dates, surveyor; exact description of monument replaced; if location computed, by taped or EDM traverse; landowner remarks, etc. (Use reverse side if necessary)

County Surveyor C.M.Keach, in Co. Survey Record No. 656 made in 1909 and recorded in Vol. 2 at page 390 states, "Stone at corner set from original BT and over old stake point, about 1 rod S of intersection of fences."

Fences have been changed to conform to monument.

DATA SHOWN HERE ON CERTIFIED CORRECT:

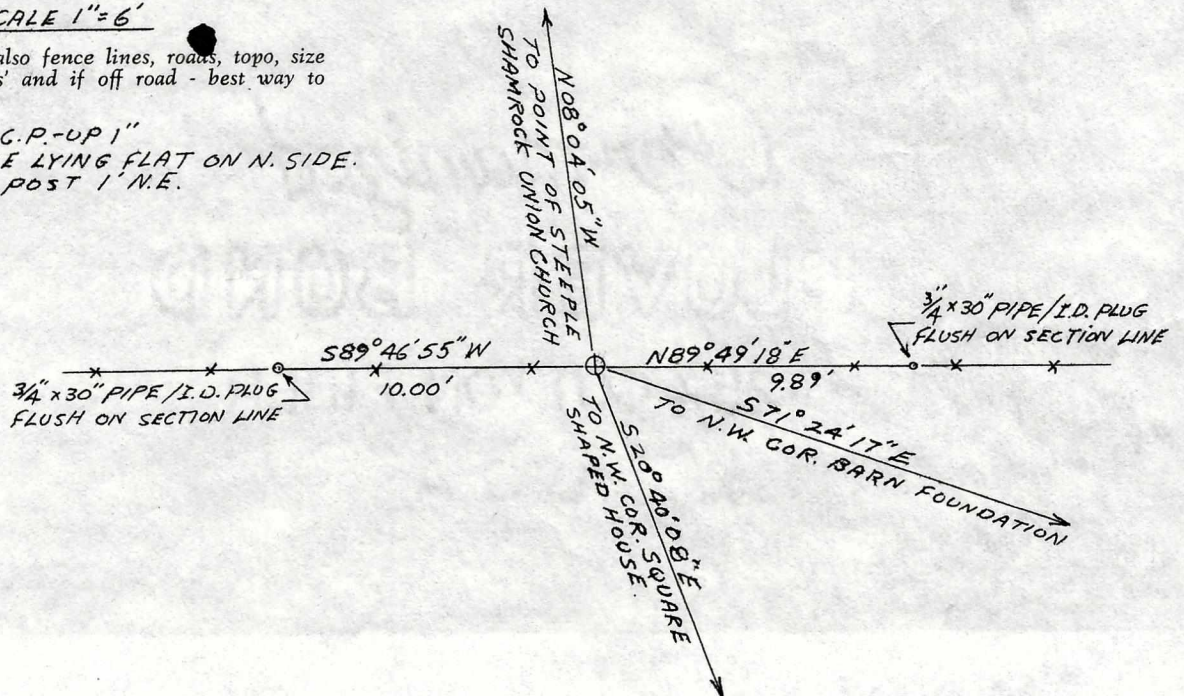
Ray W. Hurlburt
Registered Land Surveyor

DATE: Feb. 24, 1981

TIE SKETCH SCALE 1"=6'

Show at least four ties, also fence lines, roads, topo, size and type of witness trees and if off road - best way to arrive at corner.

CORNER: 2" x 48" B.C.P. - UP 1"
OLD STONE LYING FLAT ON N. SIDE.
WITNESS POST 1' N.E.



22004360020

Government Land Corner Certificate

Jackson County

TYPE OF MONUMENT: 2" BRASS CAP PIPE

STATE PLANE COORDINATES: N _____
E _____

ELEVATION — M.S.L. DATUM: _____

THETA ANGLE: _____

FIELD BOOK: _____ PAGE _____

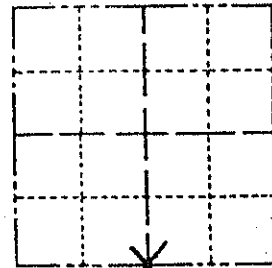
DRAWN BY: D. W. MELICHAR

CORNER NO. _____

SECTION 36

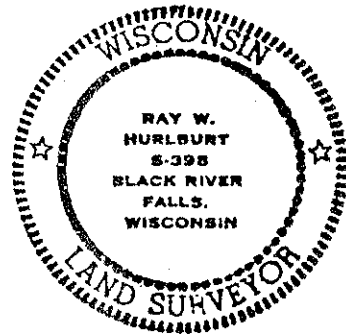
TOWN 20 N

RANGE 4 W



LOCATION
(Indicated by 'X')

SEAL:



DATA SHOWN HERE ON
CERTIFIED CORRECT:

Ray W. Hurlburt
Registered Land Surveyor

DATE: Feb. 24, 1981

BASIS FOR MONUMENT LOCATION

Ref. - "J" of Co.S.Rec.
No. 2188, Vol. 6, P. 265

Show info such as: History of corner, with reference to Vol. and pg., dates, surveyor; exact description of monument replaced; if location computed, by taped or EDM traverse; landowner remarks, etc. (Use reverse side if necessary)

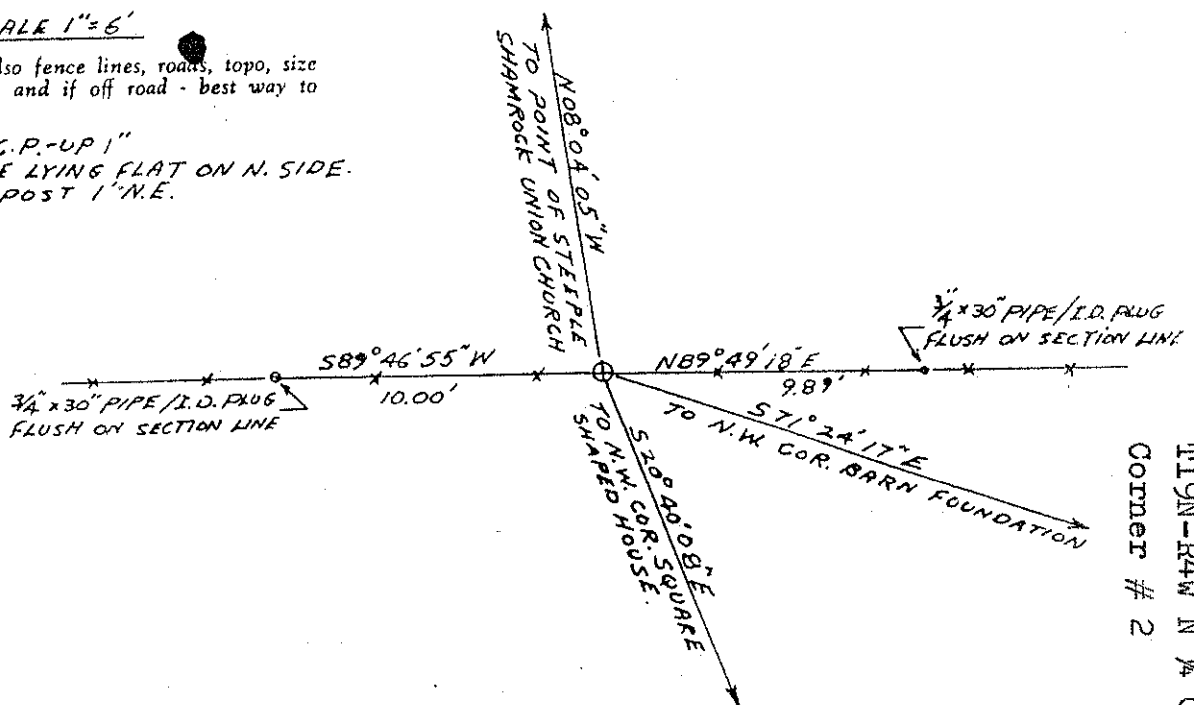
County Surveyor C.M. Keach, in Co. Survey Record No. 656 made in 1909 and recorded in Vol. 2 at page 390 states, "Stone at corner set from original BT and over old stake point, about 1 rod S of intersection of fences."

Fences have been changed to conform to monuments

TIE SKETCH SCALE 1"=6'

Show at least four ties, also fence lines, roads, topo, size and type of witness trees' and if off road - best way to arrive at corner.

CORNER: 2" x 48" B.C.P. - UP 1"
OLD STONE LYING FLAT ON N. SIDE.
WITNESS POST 1' N.E.



119N-R4W N 1/4 Corner Sec. 1
Corner # 2