

2 20 04 35 0020

# Government Land Corner Certificate

## Jackson County

CORNER NO. \_\_\_\_\_

SECTION 35

TOWN 20 N

RANGE 4 W

TYPE OF MONUMENT: SITBINE Alum Capped Alum. Pipe

STATE PLANE COORDINATES: N 47517.8516 WISGRS NAD83(91)

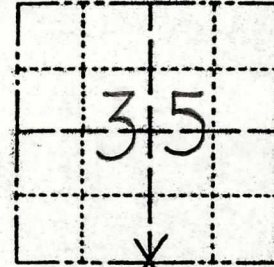
E 94263.8377 12/22/2015

ELEVATION — M.S.L. DATUM: \_\_\_\_\_ Ethan Remus

THETA ANGLE: \_\_\_\_\_

FIELD BOOK: \_\_\_\_\_ PAGE \_\_\_\_\_

DRAWN BY: D.W. MELICHAR

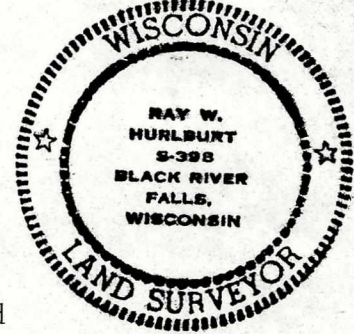


LOCATION  
(Indicated by 'X')

### BASIS FOR MONUMENT LOCATION Ref. CSM # 185 & 395

Show info such as: History of corner, with reference to Vol. and pg., dates, surveyor; exact description of monument replaced; if location computed, by taped or EDM traverse; landowner remarks, etc. (Use reverse side if necessary)

SEAL:



County Surveyor C.M. Keach, in County Survey Record No. 656 made in 1909 and recorded in Vol. 2 at page 390 states, "Stone 20 x 16 x 4. Set from original BT'. Marks plain."

I first found this stone in a survey for the Town of Manchester Garage Lot in 1954.

April 18, 2006, Tim Jeatran reported that there is an aluminum capped aluminum pipe at this corner that is stamped 1981. Evidently Ray replaced this after the ground thawed and forgot to correct this record. Co. Surveyor- John Ellingson

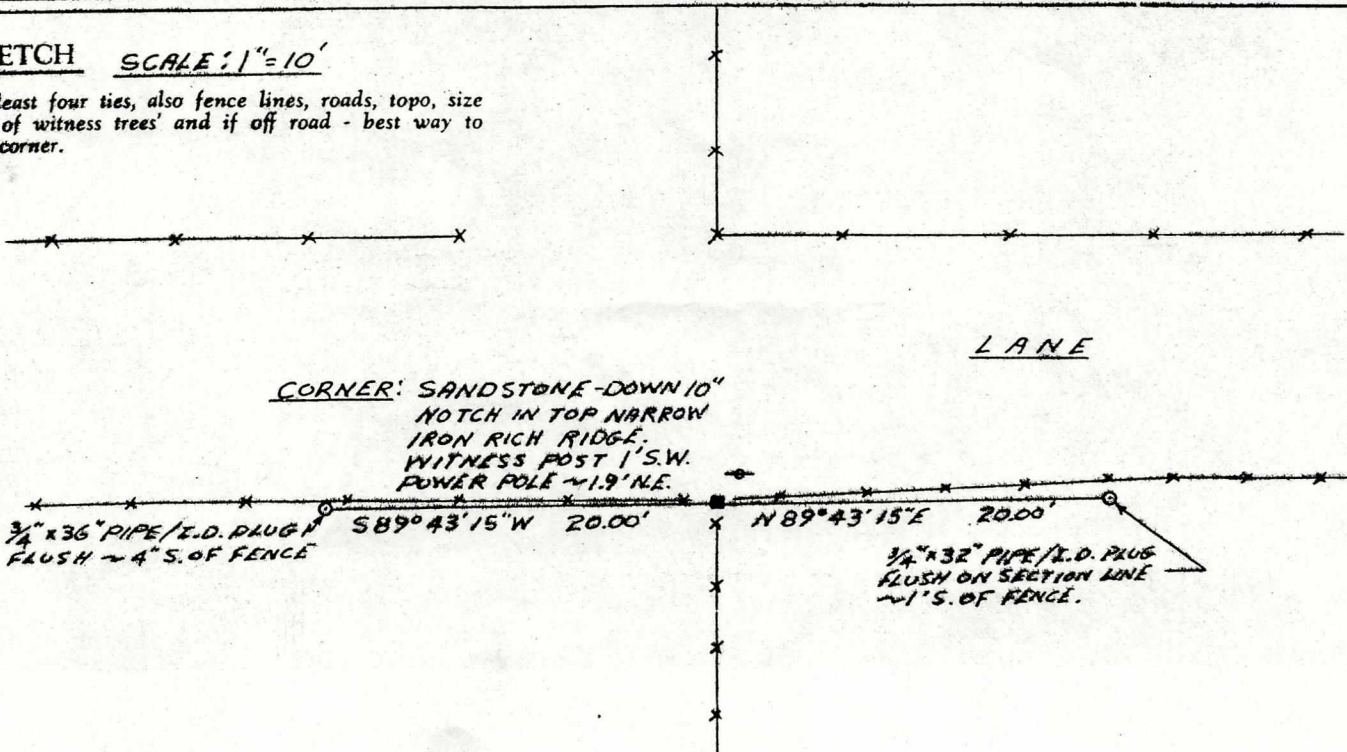
DATA SHOWN HERE ON  
CERTIFIED CORRECT:

Ray W. Hurlburt  
Registered Land Surveyor

DATE: Feb. 24, 1981

### TIE SKETCH SCALE: 1"=10'

Show at least four ties, also fence lines, roads, topo, size and type of witness trees' and if off road - best way to arrive at corner.



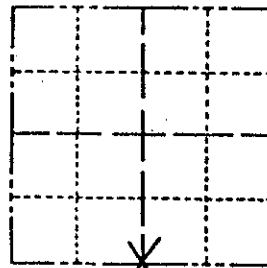
22004350020

# Government Land Corner Certificate

## Jackson County

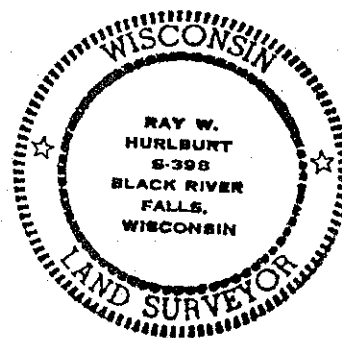
TYPE OF MONUMENT: STONE  
 STATE PLANE COORDINATES: N \_\_\_\_\_  
 E \_\_\_\_\_  
 ELEVATION — M.S.L. DATUM: \_\_\_\_\_  
 THETA ANGLE: \_\_\_\_\_  
 FIELD BOOK: \_\_\_\_\_ PAGE \_\_\_\_\_  
 DRAWN BY: D.W. MELICHAR

CORNER NO. \_\_\_\_\_  
 SECTION 35  
 TOWN 20 N  
 RANGE 4 W



LOCATION  
(Indicated by 'X')

SEAL:



### BASIS FOR MONUMENT LOCATION

Ref. - Co.S.Rec.No.2023

Show info such as: History of corner, with reference to Vol. and pg., dates, surveyor; exact description of monument replaced; if location computed, by taped or EDM traverse; landowner remarks, etc. (Use reverse side if necessary)

County Surveyor C.M.Keach, in County Survey Record No. 656 made in 1909 and recorded in Vol. 2 at page 390 states, "Stone 20 x 16 x 4. Set from original BT'. Marks plain."

I first found this stone in a survey for the Town of Manchester Garage Lot in 1954.

In the winter of 1980 the ground was frozen too hard here to remonument this corner.

In May 1981 we removed Keach's stone and replaced it with a 2 x 36 inch aluminum pipe with cap, flush, in exactly the same location, and laid stone flat on north side.

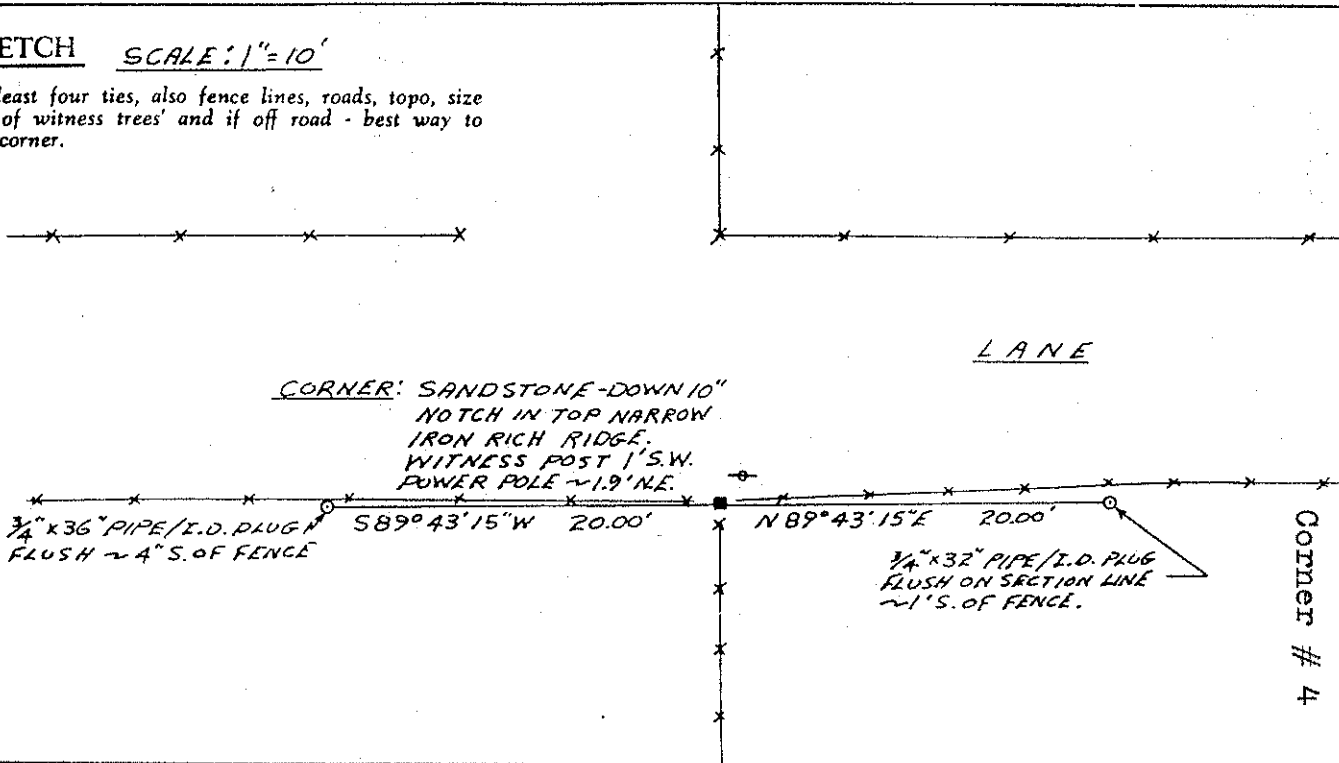
DATA SHOWN HERE ON CERTIFIED CORRECT:

Ray W. Hurlburt  
Registered Land Surveyor

DATE: Feb. 24, 1981

### TIE SKETCH SCALE: 1"=10'

Show at least four ties, also fence lines, roads, topo, size and type of witness trees' and if off road - best way to arrive at corner.



T19N-R4W N 1/4 Cor. Sec. 2  
Corner # 4