

JACKSON COUNTY – U.S. PUBLIC LAND SURVEY MONUMENT RECORD

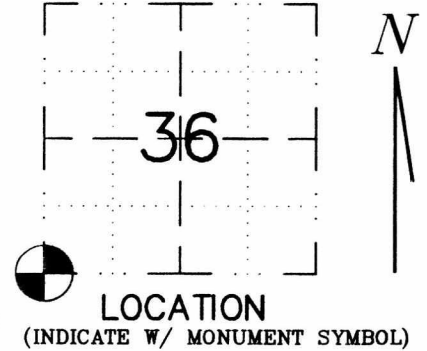
TYPE OF MONUMENT: 2" Brass Capped Iron Pipe of unknown length
 REFERENCED FOR SURVEY RECORDED IN CSM# 3681 OR CSR# _____
 SURVEYOR'S FILE# OR PROJECT# HSE File 12054
 DRAWN BY: NRH
 WITNESS: Doug Hurlburt, Randy O'Neill

CORNER VOL. 4, PAGE 502
 CORNER# 22004350000
 SECTION 36, T 20 N, R 4W

GEOGRAPHIC LOCATION:

LATT: _____
 LONG: _____
 ELLIPSOID HEIGHT _____ m _____ ft.
 ORTHO HEIGHT _____ m _____ ft.
 Estimated height accuracy ± _____ ft.

NAD 83 (91)
 WISCRS – JACKSON COUNTY
 COUNTY COORDINATE SYSTEM
 (TO BE ASSIGNED BY COUNTY)
 N = 47542.7182
 E = 96902.7118



BASIS FOR MONUMENT LOCATION

Please describe if this is a found, obliterated or lost corner. Give a complete history of the corner listing the vol. & page, dates, surveyor and description of found monument. Please list all parole testimony and who provided it as well as other witness' of recovery. Please describe the best way to reach this corner. Indicate how obstructed this monument might be for GPS observations. Continue on backside if necessary.

CM Keach, in CSR 656, Vol. 2, Page 390, dated 1909, re-established this corner midway between quarter corners and set a stone 17 x 12 x 4". In CSR 2023, Vol. 6, Page 31, dated 1954, Ray W. Hurlburt found CMK's stone leaning over at fence corner. He plumbed the stone and set a brass capped pipe on the north side. In his tie sheet dated Feb 24, 1981, RWH calls for the stone as the corner and the BCP on the north side. He set a Witness post 1' northeast of the corner. However, his map recorded as CSR 2262, Vol. 7, Page 377, dated July 15, 1981 shows the BCP as the corner.

We found the BCP partially heaved up and the stone lying flat on the south side of it. When we plumbed the pipe, we found it to fit the corner location nearly perfectly based on the reference pipe to the east. We drove it down within 6 inches of the ground surface and accepted it as the corner. The sign post had heaved up some, so we drove that down also.

The corner is wide open for GPS observations.

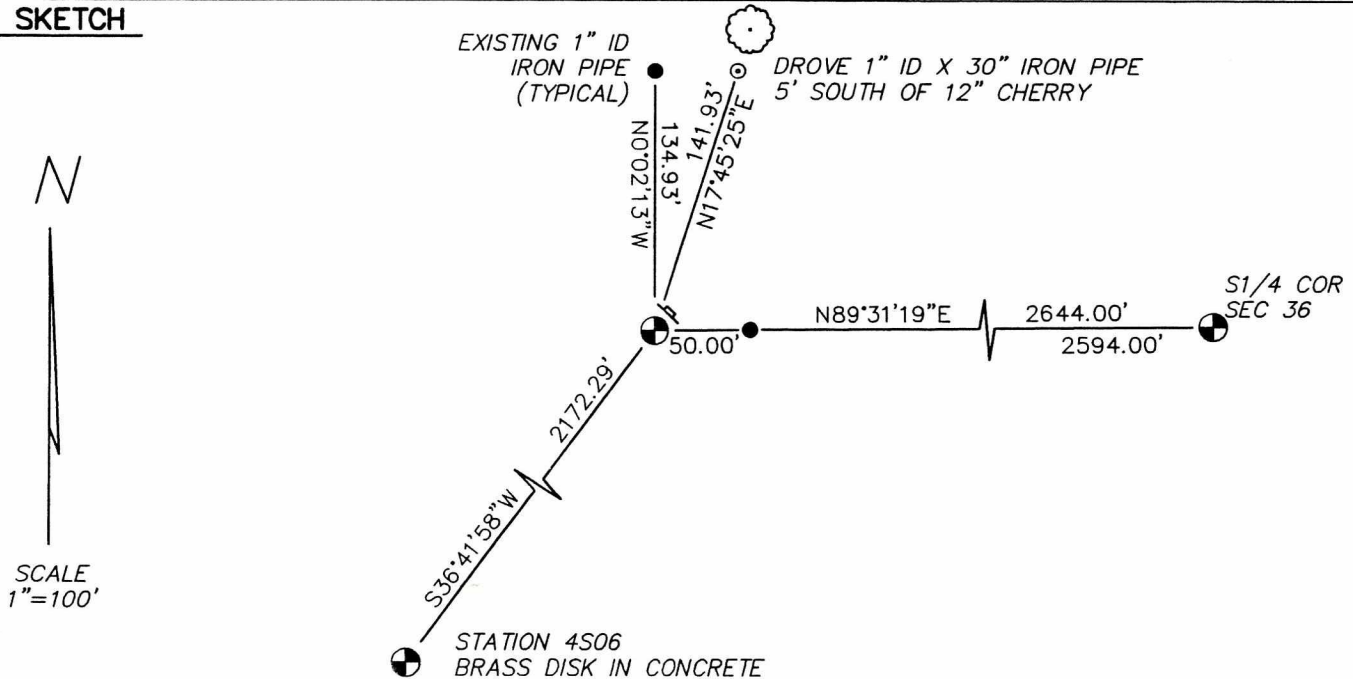


CERTIFIED CORRECT AND COMPLETE
 TO THE BEST OF MY KNOWLEDGE
 AND BELIEF:

NRH
 Registered Land Surveyor

DATE: 2/8/13

TIE SKETCH



Government Land Corner Certificate

Jackson County

TYPE OF MONUMENT: STONE

STATE PLANE COORDINATES: N _____
E _____

ELEVATION — M.S.L. DATUM: _____

THETA ANGLE: _____

FIELD BOOK: _____ PAGE _____

DRAWN BY: D.W. MELICHAR

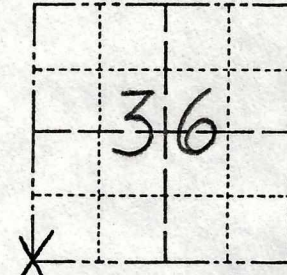
Page 502
2 20 04 35 0000

CORNER NO. _____

SECTION 36

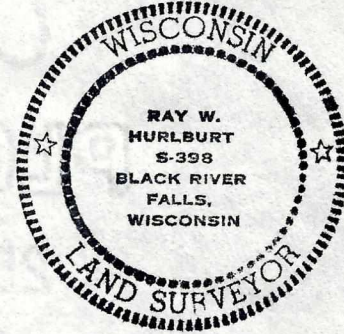
TOWN 20N

RANGE 4W



LOCATION
(Indicated by 'X')

SEAL:



BASIS FOR MONUMENT LOCATION

Show info such as: History of corner, with reference to Vol. and pg., dates, surveyor; exact description of monument replaced; if location computed, by taped or EDM traverse; landowner remarks, etc. (Use reverse side if necessary)

County Surveyor C.M. Keach, in County Survey Record No. 656 made in 1909 and recorded in Vol. 2 at page 390 states, "Original lost - Restored in town line midway on line between 1/4 corners and set stone 17 x 12 x 4."

I first found this stone in a survey for the Town of Manchester Garage Lot in 1954. At that time I set stamped cap pipe on N side for reference.

DATA SHOWN HERE ON
CERTIFIED CORRECT:

Ray W. Hurlburt
Registered Land Surveyor

DATE: Feb. 24, 1981

TIE SKETCH SCALE 1" = 50'

Show at least four ties, also fence lines, roads, topo, size and type of witness trees and if off road - best way to arrive at corner.

